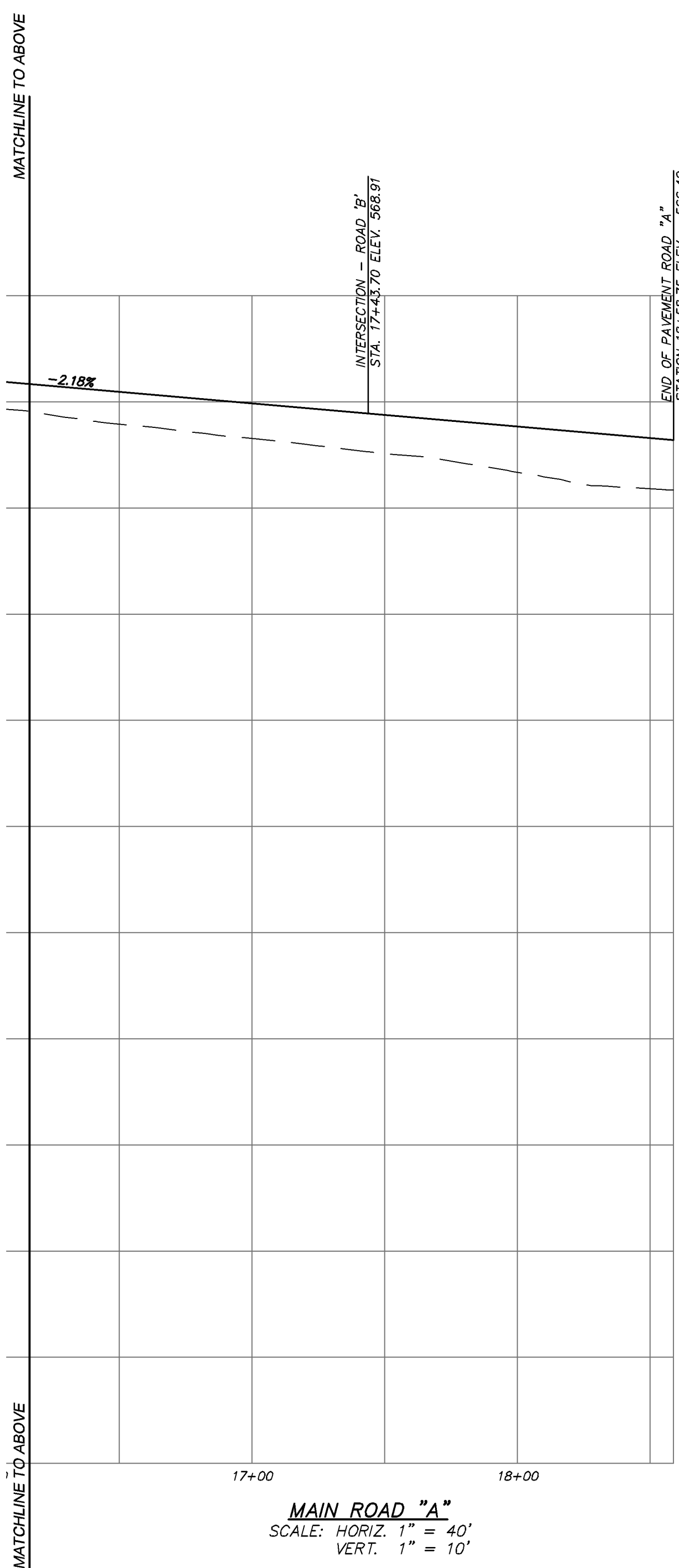
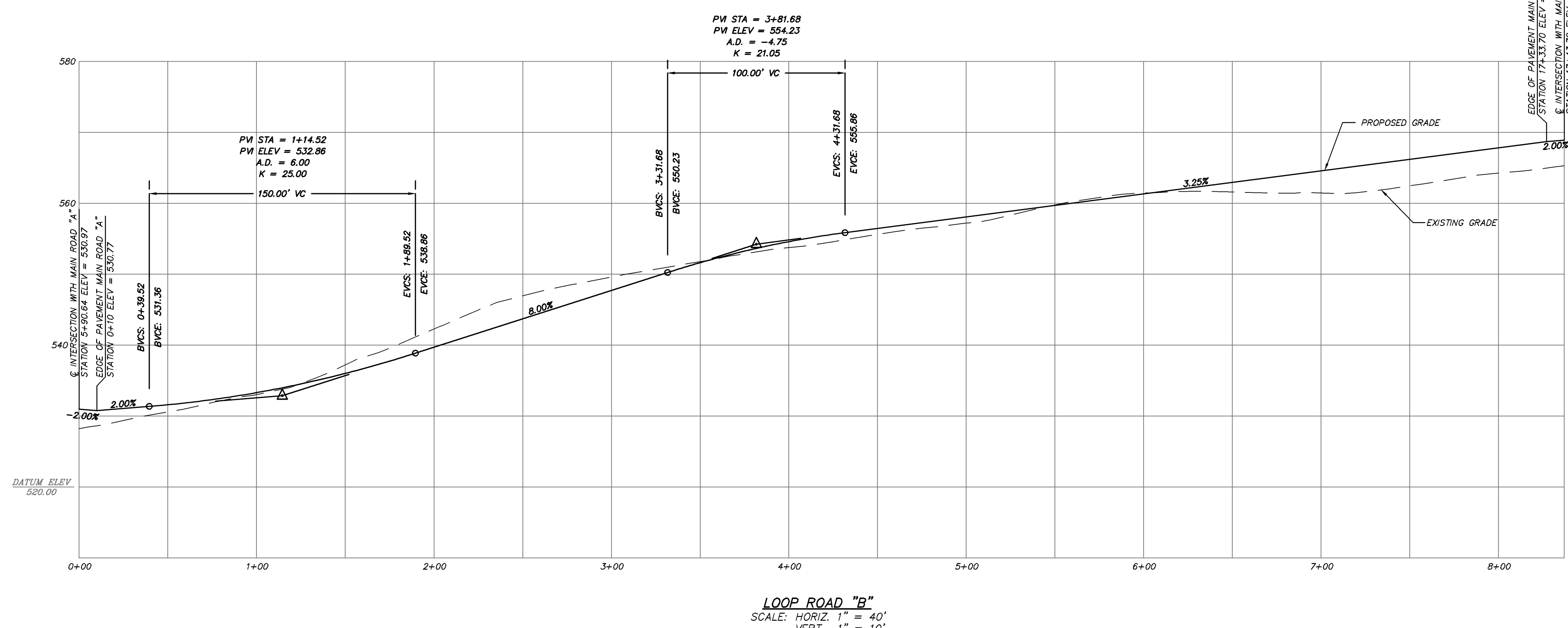


MAIN ROAD "A"
SCALE: HORIZ. 1" = 40'
VERT. 1" = 10'



MAIN ROAD "A"
SCALE: HORIZ. 1" = 40'
VERT. 1" = 10'



LOOP ROAD "B"
SCALE: HORIZ. 1" = 40'
VERT. 1" = 10'

- The complete set of drawings prepared by Insite Engineering, Surveying & Landscape Architecture, P.C. consists of the following:
- Drawing SP-1, "Overall Site Plan"
 - Drawing EX-1, "Existing Conditions Plan"
 - Drawing SP-2.1, "Layout & Landscape Plan-East"
 - Drawing SP-2.2, "Layout & Landscape Plan-West"
 - Drawing SP-3.1, "Grading Plan-East"
 - Drawing SP-3.2, "Grading Plan-West"
 - Drawing SP-4.1, "Utilities Plan-East"
 - Drawing SP-4.2, "Utilities Plan-West"
 - Drawing SP-5.1, "Overall Phasing Plan"
 - Drawing SP-5.2, "Erosion & Sediment Control Plan-East"
 - Drawing SP-5.3, "Erosion & Sediment Control Plan-West"
 - Drawing PR-1, "Road Profiles"
 - Drawing PR-2, "Drainage Profiles"
 - Drawing PR-3, "Water Profiles"
 - Drawing D-1, "Site Details"
 - Drawing D-2, "Site Details"
 - Drawing D-3, "Site Details"
 - Drawing D-4, "Site Details"
 - Drawing TR-1, "Tree Survey Plan"
 - Drawing LP-1, "Lighting Plan"
 - Drawing TR-1, "Erosion and Sight Line Plan and Profiles"
 - Drawing TR-1, "Turning Radius Plan"

Site Data:
Tax Map No.: S-1255-19
Zone: R-100/A
Area: 40 AC ±
Proposed Use: Multi-Family Residential

Owner/Applicant:
June Road Development, LLC
570 Tarter Road, 6th Floor
Elmsford, NY 10523

APPROVED FOR FILING BY:
OWNER SIGNATURE _____ DATE _____
June Road Development, LLC
570 Tarter Road, 6th Floor
Elmsford, NY 10523

APPROVED BY THE NORTH SALEM PLANNING BOARD
SIGNATURE _____ DATE _____
SIGNATURE _____ DATE _____

Note: For General Notes see Drawing SP-1.

NO.	DATE	REVISION
7	12-11-09	REVISION PER TOWN, COUNTY, NYSDSP AND STATE SUBMISSIONS
6	4-24-09	REVISION PER FEES COMMENTS
5	11-24-08	REVISION PER DES COMMENTS
4	10-08-08	REVISION PER DES COMMENTS
3	4-18-08	REVISION PER DES COMMENTS
2	3-21-08	REVISION PER DES COMMENTS
1	10-1-07	REVISION PER DES COMMENTS

INSITE
ENGINEERING, SURVEYING &
LANDSCAPE ARCHITECTURE, P.C.

3 Garrett Place
Coram, NY 10812
(845) 325-8900
(845) 325-9717 fax
www.insite-eng.com

PROJECT: SALEM HUNT
JUNE ROAD, TOWN OF NORTH SALEM, WESTCHESTER COUNTY, NEW YORK

DRAWING: ROAD PROFILES

PROJECT NO.	DATE	SCALE	PROJECT MANAGER	S.W.B.	DRAWN BY	CHECKED BY	DRAWING NO.	SHEET
05171.100	11-28-06	AS SHOWN	S.W.B.	A.D.W.	PR-1			12 / 23

ALTERATION OF THIS DOCUMENT, UNLESS UNDER THE DIRECTION OF A LICENSED PROFESSIONAL ENGINEER, IS A VIOLATION OF SECTION 2009 OF ARTICLE 145 OF THE EDUCATION LAW.