

Appendix D  
Breeding Bird Atlas Data



## NYS Breeding Bird Atlas



### 1980-1985

Navigation Tools
<a href="#">Perform Another Search</a> <a href="#">Sort by Field Card Order</a> <a href="#">Sort by Taxonomic Order</a> <a href="#">View 2000 Data</a>

Block 6056A Summary	
Total Species:	84
Possible:	16
Probable:	21
Confirmed:	47

Click on column heading to sort by that category.

<a href="#">Common Name</a>	<a href="#">Scientific Name</a>	<a href="#">Behavior Code</a>	<a href="#">Date</a>	<a href="#">NY Leg</a>
American Black Duck	<i>Anas rubripes</i>	<a href="#">X1</a>	1984	<a href="#">Game Sp</a>
American Crow	<i>Corvus brachyrhynchos</i>	<a href="#">FL</a>	1981	<a href="#">Game Sp</a>
American Goldfinch	<i>Carduelis tristis</i>	<a href="#">S2</a>	1982	<a href="#">Protectec</a>
American Redstart	<i>Setophaga ruticilla</i>	<a href="#">X1</a>	1980	<a href="#">Protectec</a>
American Robin	<i>Turdus migratorius</i>	<a href="#">FY</a>	1984	<a href="#">Protectec</a>
American Woodcock	<i>Scolopax minor</i>	<a href="#">S2</a>	1982	<a href="#">Game Sp</a>
Baltimore Oriole	<i>Icterus galbula</i>	<a href="#">FY</a>	1984	<a href="#">Protectec</a>
Bank Swallow	<i>Riparia riparia</i>	<a href="#">X1</a>	1984	<a href="#">Protectec</a>
Barn Swallow	<i>Hirundo rustica</i>	<a href="#">NY</a>	1980	<a href="#">Protectec</a>
Belted Kingfisher	<i>Ceryle alcyon</i>	<a href="#">X1</a>	1984	<a href="#">Protectec</a>
Black-and-white Warbler	<i>Mniotilta varia</i>	<a href="#">FL</a>	1980	<a href="#">Protectec</a>
Black-capped Chickadee	<i>Poecile atricapillus</i>	<a href="#">FL</a>	1982	<a href="#">Protectec</a>
Black-throated Green Warbler	<i>Dendroica virens</i>	<a href="#">S2</a>	1980	<a href="#">Protectec</a>
Blue Jay	<i>Cyanocitta cristata</i>	<a href="#">FY</a>	1984	<a href="#">Protectec</a>
Blue-winged Warbler	<i>Vermivora pinus</i>	<a href="#">FY</a>	1980	<a href="#">Protectec</a>
Bobolink	<i>Dolichonyx oryzivorus</i>	<a href="#">X1</a>	1982	<a href="#">Protectec</a>
Broad-winged Hawk	<i>Buteo platypterus</i>	<a href="#">X1</a>	1980	<a href="#">Protectec</a>
Brown Creeper	<i>Certhia americana</i>	<a href="#">X1</a>	1983	<a href="#">Protectec</a>
Brown Thrasher	<i>Toxostoma rufum</i>	<a href="#">FY</a>	1984	<a href="#">Protectec</a>
Brown-headed Cowbird	<i>Molothrus ater</i>	<a href="#">S2</a>	1980	<a href="#">Protectec</a>
Canada Goose	<i>Branta canadensis</i>	<a href="#">FL</a>	1980	<a href="#">Game Sp</a>
Canada Warbler	<i>Wilsonia canadensis</i>	<a href="#">S2</a>	1980	<a href="#">Protectec</a>
Cedar Waxwing	<i>Bombycilla cedrorum</i>	<a href="#">D2</a>	1980	<a href="#">Protectec</a>

Chestnut-sided Warbler	<i>Dendroica pensylvanica</i>	<a href="#">FY</a>	1984	<a href="#">Protectec</a>
Chimney Swift	<i>Chaetura pelagica</i>	<a href="#">X1</a>	1984	<a href="#">Protectec</a>
Chipping Sparrow	<i>Spizella passerina</i>	<a href="#">S2</a>	1980	<a href="#">Protectec</a>
Common Grackle	<i>Quiscalus quiscula</i>	<a href="#">FY</a>	1984	<a href="#">Protectec</a>
Common Yellowthroat	<i>Geothlypis trichas</i>	<a href="#">FL</a>	1980	<a href="#">Protectec</a>
Downy Woodpecker	<i>Picoides pubescens</i>	<a href="#">NY</a>	1984	<a href="#">Protectec</a>
Eastern Bluebird	<i>Sialia sialis</i>	<a href="#">FL</a>	1981	<a href="#">Protectec</a>
Eastern Kingbird	<i>Tyrannus tyrannus</i>	<a href="#">S2</a>	1980	<a href="#">Protectec</a>
Eastern Meadowlark	<i>Sturnella magna</i>	<a href="#">S2</a>	1984	<a href="#">Protectec</a>
Eastern Phoebe	<i>Sayornis phoebe</i>	<a href="#">FY</a>	1984	<a href="#">Protectec</a>
Eastern Screech-Owl	<i>Megascops asio</i>	<a href="#">NY</a>	1981	<a href="#">Protectec</a>
Eastern Towhee	<i>Pipilo erythrophthalmus</i>	<a href="#">FY</a>	1984	<a href="#">Protectec</a>
Eastern Wood-Pewee	<i>Contopus virens</i>	<a href="#">S2</a>	1980	<a href="#">Protectec</a>
European Starling	<i>Sturnus vulgaris</i>	<a href="#">NY</a>	1980	<a href="#">Unprotec</a>
Field Sparrow	<i>Spizella pusilla</i>	<a href="#">UN</a>	1984	<a href="#">Protectec</a>
Gray Catbird	<i>Dumetella carolinensis</i>	<a href="#">FY</a>	1980	<a href="#">Protectec</a>
Great Crested Flycatcher	<i>Myiarchus crinitus</i>	<a href="#">X1</a>	1982	<a href="#">Protectec</a>
Great Horned Owl	<i>Bubo virginianus</i>	<a href="#">NY</a>	1983	<a href="#">Protectec</a>
Green Heron	<i>Butorides virescens</i>	<a href="#">FL</a>	1980	<a href="#">Protectec</a>
Hairy Woodpecker	<i>Picoides villosus</i>	<a href="#">D2</a>	1984	<a href="#">Protectec</a>
Hooded Warbler	<i>Wilsonia citrina</i>	<a href="#">X1</a>	1980	<a href="#">Protectec</a>
House Finch	<i>Carpodacus mexicanus</i>	<a href="#">NY</a>	1980	<a href="#">Protectec</a>
House Sparrow	<i>Passer domesticus</i>	<a href="#">NY</a>	1984	<a href="#">Unprotec</a>
House Wren	<i>Troglodytes aedon</i>	<a href="#">NY</a>	1984	<a href="#">Protectec</a>
Indigo Bunting	<i>Passerina cyanea</i>	<a href="#">FL</a>	1980	<a href="#">Protectec</a>
Kentucky Warbler	<i>Oporornis formosus</i>	<a href="#">X1</a>	1980	<a href="#">Protectec</a>
Killdeer	<i>Charadrius vociferus</i>	<a href="#">NE</a>	1980	<a href="#">Protectec</a>
Least Flycatcher	<i>Empidonax minimus</i>	<a href="#">FY</a>	1984	<a href="#">Protectec</a>
Louisiana Waterthrush	<i>Seiurus motacilla</i>	<a href="#">P2</a>	1984	<a href="#">Protectec</a>
Mallard	<i>Anas platyrhynchos</i>	<a href="#">FL</a>	1980	<a href="#">Game Sp</a>
Mourning Dove	<i>Zenaida macroura</i>	<a href="#">FL</a>	1982	<a href="#">Protectec</a>
Mute Swan	<i>Cygnus olor</i>	<a href="#">FL</a>	1980	<a href="#">Protectec</a>
Northern Cardinal	<i>Cardinalis cardinalis</i>	<a href="#">FL</a>	1982	<a href="#">Protectec</a>
Northern Flicker	<i>Colaptes auratus</i>	<a href="#">FY</a>	1984	<a href="#">Protectec</a>
Northern Mockingbird	<i>Mimus polyglottos</i>	<a href="#">FY</a>	1984	<a href="#">Protectec</a>
Northern Rough-winged Swallow	<i>Stelgidopteryx serripennis</i>	<a href="#">X1</a>	1984	<a href="#">Protectec</a>
Ovenbird	<i>Seiurus aurocapilla</i>	<a href="#">NY</a>	1984	<a href="#">Protectec</a>
Pileated Woodpecker	<i>Dryocopus pileatus</i>	<a href="#">ON</a>	1984	<a href="#">Protectec</a>
Prairie Warbler	<i>Dendroica discolor</i>	<a href="#">S2</a>	1980	<a href="#">Protectec</a>
Red-bellied Woodpecker	<i>Melanerpes carolinus</i>	<a href="#">X1</a>	1984	<a href="#">Protectec</a>
Red-eyed Vireo	<i>Vireo olivaceus</i>	<a href="#">T2</a>	1980	<a href="#">Protectec</a>
Red-tailed Hawk	<i>Buteo jamaicensis</i>	<a href="#">FL</a>	1982	<a href="#">Protectec</a>
Red-winged Blackbird	<i>Agelaius phoeniceus</i>	<a href="#">FL</a>	1982	<a href="#">Protectec</a>
Rock Pigeon	<i>Columba livia</i>	<a href="#">D2</a>	1984	<a href="#">Unprotec</a>

Rose-breasted Grosbeak	<i>Pheucticus ludovicianus</i>	<a href="#">FL</a>	1980	<a href="#">Protectec</a>
Ruby-throated Hummingbird	<i>Archilochus colubris</i>	<a href="#">X1</a>	1980	<a href="#">Protectec</a>
Ruffed Grouse	<i>Bonasa umbellus</i>	<a href="#">FL</a>	1984	<a href="#">Game Sp</a>
Scarlet Tanager	<i>Piranga olivacea</i>	<a href="#">FL</a>	1980	<a href="#">Protectec</a>
Song Sparrow	<i>Melospiza melodia</i>	<a href="#">D2</a>	1980	<a href="#">Protectec</a>
Tree Swallow	<i>Tachycineta bicolor</i>	<a href="#">NE</a>	1980	<a href="#">Protectec</a>
Tufted Titmouse	<i>Baeolophus bicolor</i>	<a href="#">FY</a>	1980	<a href="#">Protectec</a>
Turkey Vulture	<i>Cathartes aura</i>	<a href="#">X1</a>	1980	<a href="#">Protectec</a>
Veery	<i>Catharus fuscescens</i>	<a href="#">S2</a>	1980	<a href="#">Protectec</a>
Warbling Vireo	<i>Vireo gilvus</i>	<a href="#">P2</a>	1984	<a href="#">Protectec</a>
White-breasted Nuthatch	<i>Sitta carolinensis</i>	<a href="#">FY</a>	1984	<a href="#">Protectec</a>
White-eyed Vireo	<i>Vireo griseus</i>	<a href="#">FY</a>	1984	<a href="#">Protectec</a>
Wood Thrush	<i>Hylocichla mustelina</i>	<a href="#">S2</a>	1980	<a href="#">Protectec</a>
Worm-eating Warbler	<i>Helmitheros vermivorus</i>	<a href="#">D2</a>	1980	<a href="#">Protectec</a>
Yellow Warbler	<i>Dendroica petechia</i>	<a href="#">FY</a>	1980	<a href="#">Protectec</a>
Yellow-billed Cuckoo	<i>Coccyzus americanus</i>	<a href="#">X1</a>	1980	<a href="#">Protectec</a>
Yellow-throated Vireo	<i>Vireo flavifrons</i>	<a href="#">T2</a>	1980	<a href="#">Protectec</a>

Current Date: 2/27/2007





## NYS Breeding Bird Atlas



2000-2005

Navigation Tools
<a href="#">Perform Another Search</a>
<a href="#">Show All Records</a>
<a href="#">Sort by Field Card Order</a>
<a href="#">Sort by Taxonomic Order</a>
<a href="#">View 1985 Data</a>

Block 6056A Summary	
Total Species:	85
Possible:	10
Probable:	24
Confirmed:	51

Click on column heading to sort by that category.

<a href="#">Common Name</a>	<a href="#">Scientific Name</a>	<a href="#">Behavior Code</a>	<a href="#">Date</a>	<a href="#">NY Legal Status</a>
American Crow	<i>Corvus brachyrhynchos</i>	<a href="#">FL</a>	6/9/2001	<a href="#">Game Species</a>
American Goldfinch	<i>Carduelis tristis</i>	<a href="#">P2</a>	6/9/2001	<a href="#">Protected</a>
American Redstart	<i>Setophaga ruticilla</i>	<a href="#">S2</a>	5/27/2001	<a href="#">Protected</a>
American Robin	<i>Turdus migratorius</i>	<a href="#">FL</a>	6/29/2001	<a href="#">Protected</a>
American Woodcock	<i>Scolopax minor</i>	<a href="#">X1</a>	5/14/2001	<a href="#">Game Species</a>
Baltimore Oriole	<i>Icterus galbula</i>	<a href="#">FL</a>	6/21/2004	<a href="#">Protected</a>
Barn Swallow	<i>Hirundo rustica</i>	<a href="#">ON</a>	6/2/2004	<a href="#">Protected</a>
Barred Owl	<i>Strix varia</i>	<a href="#">S2</a>	2/12/2002	<a href="#">Protected</a>
Belted Kingfisher	<i>Ceryle alcyon</i>	<a href="#">S2</a>	7/10/2001	<a href="#">Protected</a>
Black-and-white Warbler	<i>Mniotilta varia</i>	<a href="#">FL</a>	7/1/2001	<a href="#">Protected</a>
Black-billed Cuckoo	<i>Coccyzus erythrophthalmus</i>	<a href="#">S2</a>	6/19/2004	<a href="#">Protected</a>
Black-capped Chickadee	<i>Poecile atricapillus</i>	<a href="#">NY</a>	6/3/2004	<a href="#">Protected</a>
Black-throated Green Warbler	<i>Dendroica virens</i>	<a href="#">P2</a>	6/4/2004	<a href="#">Protected</a>
Blue Jay	<i>Cyanocitta cristata</i>	<a href="#">FL</a>	8/3/2001	<a href="#">Protected</a>
Blue-gray Gnatcatcher	<i>Poliptila caerulea</i>	<a href="#">FY</a>	7/4/2001	<a href="#">Protected</a>
Blue-winged Warbler	<i>Vermivora pinus</i>	<a href="#">DD</a>	5/9/2001	<a href="#">Protected</a>
Broad-winged Hawk	<i>Buteo platypterus</i>	<a href="#">NY</a>	6/8/2002	<a href="#">Protected</a>
Brown Thrasher	<i>Toxostoma rufum</i>	<a href="#">FL</a>	7/1/2001	<a href="#">Protected</a>
Brown-headed Cowbird	<i>Molothrus ater</i>	<a href="#">NE</a>	6/8/2002	<a href="#">Protected</a>
Canada Goose	<i>Branta canadensis</i>	<a href="#">FL</a>	5/14/2001	<a href="#">Game Species</a>
	<i>Thryothorus</i>			

Carolina Wren	<i>Iudovicianus</i>	X1	5/27/2001	Protected
Cedar Waxwing	<i>Bombycilla cedrorum</i>	FL	8/3/2001	Protected
Chestnut-sided Warbler	<i>Dendroica pensylvanica</i>	T2	6/8/2004	Protected
Chipping Sparrow	<i>Spizella passerina</i>	NE	6/22/2002	Protected
Cliff Swallow	<i>Petrochelidon pyrrhonota</i>	NY	6/23/2002	Protected
Common Grackle	<i>Quiscalus quiscula</i>	FY	7/1/2001	Protected
Common Yellowthroat	<i>Geothlypis trichas</i>	FL	8/3/2001	Protected
Double-crested Cormorant	<i>Phalacrocorax auritus</i>	NE	5/26/2003	Protected
Downy Woodpecker	<i>Picoides pubescens</i>	P2	5/18/2001	Protected
Eastern Bluebird	<i>Sialia sialis</i>	ON	5/5/2002	Protected
Eastern Kingbird	<i>Tyrannus tyrannus</i>	FY	6/2/2002	Protected
Eastern Phoebe	<i>Sayornis phoebe</i>	NE	6/8/2002	Protected
Eastern Screech-Owl	<i>Megascops asio</i>	X1	2/20/2002	Protected
Eastern Towhee	<i>Pipilo erythrophthalmus</i>	DD	6/29/2001	Protected
Eastern Wood-Pewee	<i>Contopus virens</i>	FY	7/4/2001	Protected
European Starling	<i>Sturnus vulgaris</i>	FL	6/9/2001	Unprotected
Field Sparrow	<i>Spizella pusilla</i>	FL	7/10/2001	Protected
Fish Crow	<i>Corvus ossifragus</i>	X1	7/10/2001	Protected
Grasshopper Sparrow	<i>Ammodramus savannarum</i>	FL	7/1/2001	Protected-Special Concern
Gray Catbird	<i>Dumetella carolinensis</i>	FY	6/26/2001	Protected
Great Crested Flycatcher	<i>Myiarchus crinitus</i>	S2	6/13/2001	Protected
Great Horned Owl	<i>Bubo virginianus</i>	T2	2/8/2002	Protected
Green Heron	<i>Butorides virescens</i>	FL	9/9/2001	Protected
House Finch	<i>Carpodacus mexicanus</i>	FL	7/24/2001	Protected
House Sparrow	<i>Passer domesticus</i>	NY	6/3/2004	Unprotected
House Wren	<i>Troglodytes aedon</i>	ON	5/25/2002	Protected
Indigo Bunting	<i>Passerina cyanea</i>	FY	6/29/2001	Protected
Louisiana Waterthrush	<i>Seiurus motacilla</i>	X1	6/4/2004	Protected
Mallard	<i>Anas platyrhynchos</i>	X1	5/16/2001	Game Species
Mourning Dove	<i>Zenaida macroura</i>	FL	7/24/2001	Protected
Mute Swan	<i>Cygnus olor</i>	P2	3/29/2001	Protected
Northern Cardinal	<i>Cardinalis cardinalis</i>	FL	6/29/2001	Protected
Northern Flicker	<i>Colaptes auratus</i>	FL	8/3/2001	Protected
Northern Mockingbird	<i>Mimus polyglottos</i>	FL	7/21/2001	Protected
Orchard Oriole	<i>Icterus spurius</i>	X1	5/20/2004	Protected
Ovenbird	<i>Seiurus aurocapilla</i>	S2	5/27/2001	Protected
Pileated Woodpecker	<i>Dryocopus pileatus</i>	S2	6/8/2004	Protected
Pine Warbler	<i>Dendroica pinus</i>	X1	6/2/2002	Protected
Prairie Warbler	<i>Dendroica discolor</i>	FY	7/3/2001	Protected
Red-bellied Woodpecker	<i>Melanerpes carolinus</i>	FL	7/6/2001	Protected
Red-eyed Vireo	<i>Vireo olivaceus</i>	S2	6/9/2001	Protected



Red-tailed Hawk	<i>Buteo jamaicensis</i>	<a href="#">S2</a>	5/27/2001	<a href="#">Protected</a>
Red-winged Blackbird	<i>Agelaius phoeniceus</i>	<a href="#">FY</a>	6/12/2002	<a href="#">Protected</a>
Rock Pigeon	<i>Columba livia</i>	<a href="#">FL</a>	5/18/2001	<a href="#">Unprotected</a>
Rose-breasted Grosbeak	<i>Pheucticus ludovicianus</i>	<a href="#">P2</a>	6/9/2001	<a href="#">Protected</a>
Ruby-throated Hummingbird	<i>Archilochus colubris</i>	<a href="#">FL</a>	7/26/2001	<a href="#">Protected</a>
Savannah Sparrow	<i>Passerculus sandwichensis</i>	<a href="#">S2</a>	5/16/2001	<a href="#">Protected</a>
Scarlet Tanager	<i>Piranga olivacea</i>	<a href="#">FL</a>	7/6/2001	<a href="#">Protected</a>
Song Sparrow	<i>Melospiza melodia</i>	<a href="#">FL</a>	7/25/2001	<a href="#">Protected</a>
Swamp Sparrow	<i>Melospiza georgiana</i>	<a href="#">S2</a>	5/20/2004	<a href="#">Protected</a>
Tree Swallow	<i>Tachycineta bicolor</i>	<a href="#">NY</a>	6/8/2004	<a href="#">Protected</a>
Tufted Titmouse	<i>Baeolophus bicolor</i>	<a href="#">FL</a>	7/24/2001	<a href="#">Protected</a>
Turkey Vulture	<i>Cathartes aura</i>	<a href="#">X1</a>	5/16/2001	<a href="#">Protected</a>
Veery	<i>Catharus fuscescens</i>	<a href="#">S2</a>	5/27/2001	<a href="#">Protected</a>
Warbling Vireo	<i>Vireo gilvus</i>	<a href="#">S2</a>	6/1/2001	<a href="#">Protected</a>
White-breasted Nuthatch	<i>Sitta carolinensis</i>	<a href="#">FY</a>	6/13/2004	<a href="#">Protected</a>
Wild Turkey	<i>Meleagris gallopavo</i>	<a href="#">FL</a>	7/1/2001	<a href="#">Game Species</a>
Winter Wren	<i>Troglodytes troglodytes</i>	<a href="#">X1</a>	6/29/2001	<a href="#">Protected</a>
Wood Duck	<i>Aix sponsa</i>	<a href="#">ON</a>	5/2/2003	<a href="#">Game Species</a>
Wood Thrush	<i>Hylocichla mustelina</i>	<a href="#">FY</a>	6/28/2001	<a href="#">Protected</a>
Worm-eating Warbler	<i>Helmitheros vermivorus</i>	<a href="#">S2</a>	6/26/2001	<a href="#">Protected</a>
Yellow Warbler	<i>Dendroica petechia</i>	<a href="#">FL</a>	6/19/2004	<a href="#">Protected</a>
Yellow-billed Cuckoo	<i>Coccyzus americanus</i>	<a href="#">S2</a>	6/21/2004	<a href="#">Protected</a>
Yellow-breasted Chat	<i>Icteria virens</i>	<a href="#">T2</a>	6//2005	<a href="#">Protected-Special Concern</a>
Yellow-throated Vireo	<i>Vireo flavifrons</i>	<a href="#">S2</a>	7/4/2001	<a href="#">Protected</a>

Current Date: 2/27/2007



## NYS Breeding Bird Atlas



### 1980-1985

Navigation Tools
<a href="#">Perform Another Search</a> <a href="#">Sort by Field Card Order</a> <a href="#">Sort by Taxonomic Order</a> <a href="#">View 2000 Data</a>

Block 6056B Summary	
Total Species:	96
Possible:	7
Probable:	13
Confirmed:	76

Click on column heading to sort by that category.

<a href="#">Common Name</a>	<a href="#">Scientific Name</a>	<a href="#">Behavior Code</a>	<a href="#">Date</a>	<a href="#">NY Legal S</a>
American Black Duck	<i>Anas rubripes</i>	<a href="#">FL</a>	1981	<a href="#">Game Species</a>
American Crow	<i>Corvus brachyrhynchos</i>	<a href="#">NE</a>	1985	<a href="#">Game Species</a>
American Goldfinch	<i>Carduelis tristis</i>	<a href="#">UN</a>	1982	<a href="#">Protected</a>
American Kestrel	<i>Falco sparverius</i>	<a href="#">ON</a>	1980	<a href="#">Protected</a>
American Redstart	<i>Setophaga ruticilla</i>	<a href="#">P2</a>	1983	<a href="#">Protected</a>
American Robin	<i>Turdus migratorius</i>	<a href="#">NE</a>	1981	<a href="#">Protected</a>
American Woodcock	<i>Scolopax minor</i>	<a href="#">D2</a>	1981	<a href="#">Game Species</a>
Baltimore Oriole	<i>Icterus galbula</i>	<a href="#">FY</a>	1983	<a href="#">Protected</a>
Bank Swallow	<i>Riparia riparia</i>	<a href="#">ON</a>	1982	<a href="#">Protected</a>
Barn Swallow	<i>Hirundo rustica</i>	<a href="#">FY</a>	1983	<a href="#">Protected</a>
Belted Kingfisher	<i>Ceryle alcyon</i>	<a href="#">FY</a>	1983	<a href="#">Protected</a>
Black-and-white Warbler	<i>Mniotilta varia</i>	<a href="#">FY</a>	1983	<a href="#">Protected</a>
Black-billed Cuckoo	<i>Coccyzus erythrophthalmus</i>	<a href="#">FY</a>	1981	<a href="#">Protected</a>
Black-capped Chickadee	<i>Poecile atricapillus</i>	<a href="#">FY</a>	1983	<a href="#">Protected</a>
Black-throated Green Warbler	<i>Dendroica virens</i>	<a href="#">P2</a>	1981	<a href="#">Protected</a>
Blue Jay	<i>Cyanocitta cristata</i>	<a href="#">FY</a>	1981	<a href="#">Protected</a>
Blue-gray Gnatcatcher	<i>Polioptila caerulea</i>	<a href="#">X1</a>	1985	<a href="#">Protected</a>
Blue-winged Warbler	<i>Vermivora pinus</i>	<a href="#">FY</a>	1981	<a href="#">Protected</a>
Broad-winged Hawk	<i>Buteo platypterus</i>	<a href="#">NY</a>	1984	<a href="#">Protected</a>
Brown Creeper	<i>Certhia americana</i>	<a href="#">FY</a>	1983	<a href="#">Protected</a>
Brown Thrasher	<i>Toxostoma rufum</i>	<a href="#">FL</a>	1981	<a href="#">Protected</a>
Brown-headed Cowbird	<i>Molothrus ater</i>	<a href="#">P2</a>	1981	<a href="#">Protected</a>
Canada Goose	<i>Branta canadensis</i>	<a href="#">FL</a>	1981	<a href="#">Game Species</a>

Carolina Wren	<i>Thryothorus ludovicianus</i>	<a href="#">FY</a>	1983	<a href="#">Protected</a>
Cedar Waxwing	<i>Bombycilla cedrorum</i>	<a href="#">FY</a>	1984	<a href="#">Protected</a>
Chestnut-sided Warbler	<i>Dendroica pensylvanica</i>	<a href="#">FY</a>	1984	<a href="#">Protected</a>
Chimney Swift	<i>Chaetura pelagica</i>	<a href="#">NE</a>	1981	<a href="#">Protected</a>
Chipping Sparrow	<i>Spizella passerina</i>	<a href="#">FY</a>	1982	<a href="#">Protected</a>
Cliff Swallow	<i>Petrochelidon pyrrhonota</i>	<a href="#">ON</a>	1981	<a href="#">Protected</a>
Common Grackle	<i>Quiscalus quiscula</i>	<a href="#">FY</a>	1981	<a href="#">Protected</a>
Common Yellowthroat	<i>Geothlypis trichas</i>	<a href="#">NY</a>	1983	<a href="#">Protected</a>
Downy Woodpecker	<i>Picoides pubescens</i>	<a href="#">FY</a>	1983	<a href="#">Protected</a>
Eastern Bluebird	<i>Sialia sialis</i>	<a href="#">NY</a>	1983	<a href="#">Protected</a>
Eastern Kingbird	<i>Tyrannus tyrannus</i>	<a href="#">FY</a>	1981	<a href="#">Protected</a>
Eastern Meadowlark	<i>Sturnella magna</i>	<a href="#">P2</a>	1981	<a href="#">Protected</a>
Eastern Phoebe	<i>Sayornis phoebe</i>	<a href="#">ON</a>	1981	<a href="#">Protected</a>
Eastern Screech-Owl	<i>Megascops asio</i>	<a href="#">FL</a>	1983	<a href="#">Protected</a>
Eastern Towhee	<i>Pipilo erythrophthalmus</i>	<a href="#">FY</a>	1984	<a href="#">Protected</a>
Eastern Wood-Pewee	<i>Contopus virens</i>	<a href="#">P2</a>	1981	<a href="#">Protected</a>
European Starling	<i>Sturnus vulgaris</i>	<a href="#">NY</a>	1981	<a href="#">Unprotected</a>
Field Sparrow	<i>Spizella pusilla</i>	<a href="#">FY</a>	1982	<a href="#">Protected</a>
Fish Crow	<i>Corvus ossifragus</i>	<a href="#">X1</a>	1985	<a href="#">Protected</a>
Golden-winged Warbler	<i>Vermivora chrysoptera</i>	<a href="#">P2</a>	1983	<a href="#">Protected-Speci</a>
Gray Catbird	<i>Dumetella carolinensis</i>	<a href="#">NY</a>	1981	<a href="#">Protected</a>
Great Blue Heron	<i>Ardea herodias</i>	<a href="#">X1</a>	1981	<a href="#">Protected</a>
Great Crested Flycatcher	<i>Myiarchus crinitus</i>	<a href="#">FY</a>	1984	<a href="#">Protected</a>
Great Horned Owl	<i>Bubo virginianus</i>	<a href="#">FL</a>	1984	<a href="#">Protected</a>
Green Heron	<i>Butorides virescens</i>	<a href="#">P2</a>	1982	<a href="#">Protected</a>
Hairy Woodpecker	<i>Picoides villosus</i>	<a href="#">FY</a>	1983	<a href="#">Protected</a>
House Finch	<i>Carpodacus mexicanus</i>	<a href="#">NY</a>	1981	<a href="#">Protected</a>
House Sparrow	<i>Passer domesticus</i>	<a href="#">NY</a>	1983	<a href="#">Unprotected</a>
House Wren	<i>Troglodytes aedon</i>	<a href="#">FY</a>	1983	<a href="#">Protected</a>
Indigo Bunting	<i>Passerina cyanea</i>	<a href="#">FY</a>	1983	<a href="#">Protected</a>
Killdeer	<i>Charadrius vociferus</i>	<a href="#">DD</a>	1981	<a href="#">Protected</a>
Least Flycatcher	<i>Empidonax minimus</i>	<a href="#">S2</a>	1981	<a href="#">Protected</a>
Louisiana Waterthrush	<i>Seiurus motacilla</i>	<a href="#">FY</a>	1982	<a href="#">Protected</a>
Mallard	<i>Anas platyrhynchos</i>	<a href="#">FL</a>	1981	<a href="#">Game Species</a>
Mourning Dove	<i>Zenaida macroura</i>	<a href="#">NY</a>	1983	<a href="#">Protected</a>
Mute Swan	<i>Cygnus olor</i>	<a href="#">FL</a>	1982	<a href="#">Protected</a>
Northern Cardinal	<i>Cardinalis cardinalis</i>	<a href="#">NY</a>	1981	<a href="#">Protected</a>
Northern Flicker	<i>Colaptes auratus</i>	<a href="#">FY</a>	1983	<a href="#">Protected</a>
Northern Mockingbird	<i>Mimus polyglottos</i>	<a href="#">NY</a>	1981	<a href="#">Protected</a>
Northern Rough-winged Swallow	<i>Stelgidopteryx serripennis</i>	<a href="#">ON</a>	1981	<a href="#">Protected</a>
Ovenbird	<i>Seiurus aurocapilla</i>	<a href="#">FY</a>	1983	<a href="#">Protected</a>
Pileated Woodpecker	<i>Dryocopus pileatus</i>	<a href="#">T2</a>	1981	<a href="#">Protected</a>
Pine Warbler	<i>Dendroica pinus</i>	<a href="#">FY</a>	1985	<a href="#">Protected</a>
Prairie Warbler	<i>Dendroica discolor</i>	<a href="#">FY</a>	1981	<a href="#">Protected</a>

Red-bellied Woodpecker	<i>Melanerpes carolinus</i>	<a href="#">P2</a>	1981	<a href="#">Protected</a>
Red-breasted Nuthatch	<i>Sitta canadensis</i>	<a href="#">X1</a>	1985	<a href="#">Protected</a>
Red-eyed Vireo	<i>Vireo olivaceus</i>	<a href="#">FY</a>	1982	<a href="#">Protected</a>
Red-shouldered Hawk	<i>Buteo lineatus</i>	<a href="#">X1</a>	1983	<a href="#">Protected-Species</a>
Red-tailed Hawk	<i>Buteo jamaicensis</i>	<a href="#">NY</a>	1981	<a href="#">Protected</a>
Red-winged Blackbird	<i>Agelaius phoeniceus</i>	<a href="#">NE</a>	1981	<a href="#">Protected</a>
Ring-necked Pheasant	<i>Phasianus colchicus</i>	<a href="#">FL</a>	1984	<a href="#">Game Species</a>
Rock Pigeon	<i>Columba livia</i>	<a href="#">NY</a>	1981	<a href="#">Unprotected</a>
Rose-breasted Grosbeak	<i>Pheucticus ludovicianus</i>	<a href="#">FY</a>	1983	<a href="#">Protected</a>
Ruby-throated Hummingbird	<i>Archilochus colubris</i>	<a href="#">P2</a>	1983	<a href="#">Protected</a>
Ruffed Grouse	<i>Bonasa umbellus</i>	<a href="#">FL</a>	1981	<a href="#">Game Species</a>
Scarlet Tanager	<i>Piranga olivacea</i>	<a href="#">FL</a>	1984	<a href="#">Protected</a>
Sharp-shinned Hawk	<i>Accipiter striatus</i>	<a href="#">X1</a>	1981	<a href="#">Protected-Species</a>
Song Sparrow	<i>Melospiza melodia</i>	<a href="#">NY</a>	1981	<a href="#">Protected</a>
Spotted Sandpiper	<i>Actitis macularia</i>	<a href="#">T2</a>	1981	<a href="#">Protected</a>
Swamp Sparrow	<i>Melospiza georgiana</i>	<a href="#">FY</a>	1984	<a href="#">Protected</a>
Tree Swallow	<i>Tachycineta bicolor</i>	<a href="#">FY</a>	1983	<a href="#">Protected</a>
Tufted Titmouse	<i>Baeolophus bicolor</i>	<a href="#">FY</a>	1983	<a href="#">Protected</a>
Turkey Vulture	<i>Cathartes aura</i>	<a href="#">X1</a>	1982	<a href="#">Protected</a>
Veery	<i>Catharus fuscescens</i>	<a href="#">NE</a>	1981	<a href="#">Protected</a>
Warbling Vireo	<i>Vireo gilvus</i>	<a href="#">FL</a>	1984	<a href="#">Protected</a>
White-breasted Nuthatch	<i>Sitta carolinensis</i>	<a href="#">FY</a>	1983	<a href="#">Protected</a>
Willow Flycatcher	<i>Empidonax traillii</i>	<a href="#">FY</a>	1984	<a href="#">Protected</a>
Wood Duck	<i>Aix sponsa</i>	<a href="#">NE</a>	1981	<a href="#">Game Species</a>
Wood Thrush	<i>Hylocichla mustelina</i>	<a href="#">FY</a>	1983	<a href="#">Protected</a>
Worm-eating Warbler	<i>Helmitheros vermivorus</i>	<a href="#">FL</a>	1983	<a href="#">Protected</a>
Yellow Warbler	<i>Dendroica petechia</i>	<a href="#">FY</a>	1981	<a href="#">Protected</a>
Yellow-billed Cuckoo	<i>Coccyzus americanus</i>	<a href="#">FY</a>	1981	<a href="#">Protected</a>
Yellow-throated Vireo	<i>Vireo flavifrons</i>	<a href="#">FY</a>	1984	<a href="#">Protected</a>

Current Date: 2/27/2007





## NYS Breeding Bird Atlas



### 2000-2005

Navigation Tools
<a href="#">Perform Another Search</a>
<a href="#">Show All Records</a>
<a href="#">Sort by Field Card Order</a>
<a href="#">Sort by Taxonomic Order</a>
<a href="#">View 1985 Data</a>

Block 6056B Summary	
Total Species:	88
Possible:	10
Probable:	40
Confirmed:	38

Click on column heading to sort by that category.

<a href="#">Common Name</a>	<a href="#">Scientific Name</a>	<a href="#">Behavior Code</a>	<a href="#">Date</a>	<a href="#">NY Legal Status</a>
American Crow	<i>Corvus brachyrhynchos</i>	<a href="#">FL</a>	6/23/2002	<a href="#">Game Species</a>
American Goldfinch	<i>Carduelis tristis</i>	<a href="#">S2</a>	7/8/2004	<a href="#">Protected</a>
American Redstart	<i>Setophaga ruticilla</i>	<a href="#">S2</a>	6/3/2004	<a href="#">Protected</a>
American Robin	<i>Turdus migratorius</i>	<a href="#">NY</a>	5/30/2004	<a href="#">Protected</a>
Baltimore Oriole	<i>Icterus galbula</i>	<a href="#">ON</a>	6/2/2004	<a href="#">Protected</a>
Bank Swallow	<i>Riparia riparia</i>	<a href="#">X1</a>	6/11/2004	<a href="#">Protected</a>
Barn Swallow	<i>Hirundo rustica</i>	<a href="#">ON</a>	5/15/2002	<a href="#">Protected</a>
Barred Owl	<i>Strix varia</i>	<a href="#">T2</a>	4/10/2004	<a href="#">Protected</a>
Belted Kingfisher	<i>Ceryle alcyon</i>	<a href="#">P2</a>	6/2/2004	<a href="#">Protected</a>
Black-and-white Warbler	<i>Mniotilta varia</i>	<a href="#">S2</a>	6/2/2004	<a href="#">Protected</a>
Black-capped Chickadee	<i>Poecile atricapillus</i>	<a href="#">FS</a>	6/20/2002	<a href="#">Protected</a>
Black-throated Green Warbler	<i>Dendroica virens</i>	<a href="#">N2</a>	6/22/2002	<a href="#">Protected</a>
Blue Jay	<i>Cyanocitta cristata</i>	<a href="#">FY</a>	5/15/2002	<a href="#">Protected</a>
Blue-gray Gnatcatcher	<i>Polioptila caerulea</i>	<a href="#">T2</a>	6/3/2004	<a href="#">Protected</a>
Blue-winged Warbler	<i>Vermivora pinus</i>	<a href="#">T2</a>	7/8/2004	<a href="#">Protected</a>
Brown Creeper	<i>Certhia americana</i>	<a href="#">S2</a>	6/3/2004	<a href="#">Protected</a>
Brown Thrasher	<i>Toxostoma rufum</i>	<a href="#">X1</a>	6/2/2004	<a href="#">Protected</a>
Brown-headed Cowbird	<i>Molothrus ater</i>	<a href="#">N2</a>	6/30/2002	<a href="#">Protected</a>
Canada Goose	<i>Branta canadensis</i>	<a href="#">FL</a>	5/16/2002	<a href="#">Game Species</a>
Carolina Wren	<i>Thryothorus ludovicianus</i>	<a href="#">FS</a>	6/11/2004	<a href="#">Protected</a>
Cedar Waxwing	<i>Bombycilla cedrorum</i>	<a href="#">X1</a>	7/8/2004	<a href="#">Protected</a>

Chestnut-sided Warbler	<i>Dendroica pensylvanica</i>	T2	6/2/2004	Protected
Chimney Swift	<i>Chaetura pelagica</i>	FL	6/23/2002	Protected
Chipping Sparrow	<i>Spizella passerina</i>	FY	6/3/2004	Protected
Cliff Swallow	<i>Petrochelidon pyrrhonota</i>	ON	5/15/2002	Protected
Common Grackle	<i>Quiscalus quiscula</i>	N2	6/22/2002	Protected
Common Yellowthroat	<i>Geothlypis trichas</i>	ON	6/9/2004	Protected
Cooper's Hawk	<i>Accipiter cooperii</i>	T2	6/1/2004	Protected-Special Concern
Double-crested Cormorant	<i>Phalacrocorax auritus</i>	X1	6/1/2004	Protected
Downy Woodpecker	<i>Picoides pubescens</i>	P2	6/2/2004	Protected
Eastern Bluebird	<i>Sialia sialis</i>	ON	6/9/2004	Protected
Eastern Kingbird	<i>Tyrannus tyrannus</i>	S2	6/3/2004	Protected
Eastern Phoebe	<i>Sayornis phoebe</i>	FY	6/2/2004	Protected
Eastern Screech-Owl	<i>Megascops asio</i>	T2	4/10/2004	Protected
Eastern Towhee	<i>Pipilo erythrophthalmus</i>	FY	6/9/2004	Protected
Eastern Wood-Pewee	<i>Contopus virens</i>	S2	6/3/2004	Protected
European Starling	<i>Sturnus vulgaris</i>	ON	5/30/2004	Unprotected
Fish Crow	<i>Corvus ossifragus</i>	P2	6/2/2004	Protected
Gray Catbird	<i>Dumetella carolinensis</i>	FY	6/11/2004	Protected
Great Blue Heron	<i>Ardea herodias</i>	X1	6/1/2004	Protected
Great Crested Flycatcher	<i>Myiarchus crinitus</i>	FY	6/3/2004	Protected
Great Horned Owl	<i>Bubo virginianus</i>	T2	4/10/2004	Protected
Green Heron	<i>Butorides virescens</i>	P2	5/30/2004	Protected
Hairy Woodpecker	<i>Picoides villosus</i>	P2	6/2/2004	Protected
House Finch	<i>Carpodacus mexicanus</i>	FS	5/30/2004	Protected
House Sparrow	<i>Passer domesticus</i>	ON	4/20/2004	Unprotected
House Wren	<i>Troglodytes aedon</i>	FY	6/9/2004	Protected
Indigo Bunting	<i>Passerina cyanea</i>	FY	6/11/2004	Protected
Killdeer	<i>Charadrius vociferus</i>	D2	4/30/2002	Protected
Louisiana Waterthrush	<i>Seiurus motacilla</i>	T2	5/30/2004	Protected
Mallard	<i>Anas platyrhynchos</i>	FL	6/5/2004	Game Species
Mourning Dove	<i>Zenaida macroura</i>	S2	5/30/2002	Protected
Mute Swan	<i>Cygnus olor</i>	FL	6/1/2004	Protected
Northern Cardinal	<i>Cardinalis cardinalis</i>	NY	//2004	Protected
Northern Flicker	<i>Colaptes auratus</i>	ON	6/2/2004	Protected
Northern Mockingbird	<i>Mimus polyglottos</i>	T2	6/2/2004	Protected
Northern Rough-winged Swallow	<i>Stelgidopteryx serripennis</i>	X1	6/11/2004	Protected
Orchard Oriole	<i>Icterus spurius</i>	T2	6/3/2004	Protected
Ovenbird	<i>Seiurus aurocapilla</i>	FY	6/11/2004	Protected
Pileated Woodpecker	<i>Dryocopus pileatus</i>	P2	6/3/2004	Protected
Pine Warbler	<i>Dendroica pinus</i>	FS	6/9/2004	Protected
Prairie Warbler	<i>Dendroica discolor</i>	N2	6/30/2002	Protected

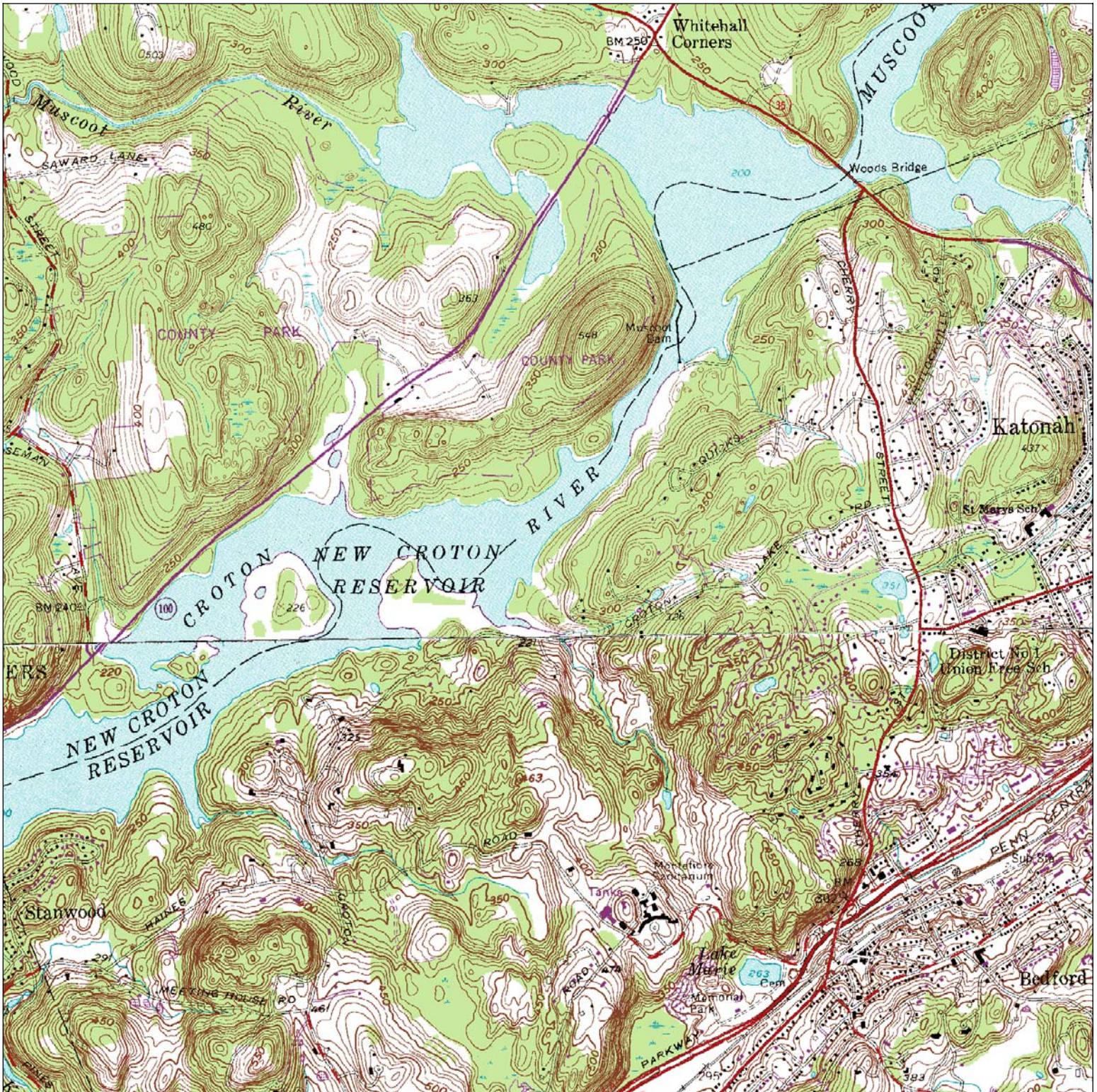


Red-bellied Woodpecker	<i>Melanerpes carolinus</i>	<a href="#">ON</a>	6/2/2004	<a href="#">Protected</a>
Red-breasted Nuthatch	<i>Sitta canadensis</i>	<a href="#">X1</a>	6/3/2004	<a href="#">Protected</a>
Red-eyed Vireo	<i>Vireo olivaceus</i>	<a href="#">S2</a>	6/23/2002	<a href="#">Protected</a>
Red-tailed Hawk	<i>Buteo jamaicensis</i>	<a href="#">P2</a>	5/30/2004	<a href="#">Protected</a>
Red-winged Blackbird	<i>Agelaius phoeniceus</i>	<a href="#">S2</a>	5/30/2004	<a href="#">Protected</a>
Rock Pigeon	<i>Columba livia</i>	<a href="#">X1</a>	6/11/2004	<a href="#">Unprotected</a>
Rose-breasted Grosbeak	<i>Pheucticus ludovicianus</i>	<a href="#">P2</a>	6/9/2004	<a href="#">Protected</a>
Ruby-throated Hummingbird	<i>Archilochus colubris</i>	<a href="#">X1</a>	6/2/2004	<a href="#">Protected</a>
Ruffed Grouse	<i>Bonasa umbellus</i>	<a href="#">T2</a>	5/1/2004	<a href="#">Game Species</a>
Scarlet Tanager	<i>Piranga olivacea</i>	<a href="#">S2</a>	6/11/2004	<a href="#">Protected</a>
Song Sparrow	<i>Melospiza melodia</i>	<a href="#">NY</a>	6/3/2004	<a href="#">Protected</a>
Spotted Sandpiper	<i>Actitis macularia</i>	<a href="#">T2</a>	6/11/2004	<a href="#">Protected</a>
Tree Swallow	<i>Tachycineta bicolor</i>	<a href="#">FS</a>	6/30/2002	<a href="#">Protected</a>
Tufted Titmouse	<i>Baeolophus bicolor</i>	<a href="#">FS</a>	6/23/2002	<a href="#">Protected</a>
Turkey Vulture	<i>Cathartes aura</i>	<a href="#">X1</a>	5/30/2004	<a href="#">Protected</a>
Veery	<i>Catharus fuscescens</i>	<a href="#">FY</a>	7/8/2004	<a href="#">Protected</a>
Warbling Vireo	<i>Vireo gilvus</i>	<a href="#">FS</a>	6/3/2004	<a href="#">Protected</a>
White-breasted Nuthatch	<i>Sitta carolinensis</i>	<a href="#">P2</a>	6/30/2002	<a href="#">Protected</a>
White-eyed Vireo	<i>Vireo griseus</i>	<a href="#">S2</a>	6/29/2002	<a href="#">Protected</a>
Wild Turkey	<i>Meleagris gallopavo</i>	<a href="#">FL</a>	6/9/2004	<a href="#">Game Species</a>
Wood Duck	<i>Aix sponsa</i>	<a href="#">P2</a>	6/5/2004	<a href="#">Game Species</a>
Wood Thrush	<i>Hylocichla mustelina</i>	<a href="#">FY</a>	6/9/2004	<a href="#">Protected</a>
Worm-eating Warbler	<i>Helmitheros vermivorus</i>	<a href="#">FL</a>	6/11/2004	<a href="#">Protected</a>
Yellow Warbler	<i>Dendroica petechia</i>	<a href="#">NY</a>	6/9/2004	<a href="#">Protected</a>
Yellow-billed Cuckoo	<i>Coccyzus americanus</i>	<a href="#">T2</a>	6/11/2004	<a href="#">Protected</a>
Yellow-throated Vireo	<i>Vireo flavifrons</i>	<a href="#">T2</a>	6/11/2004	<a href="#">Protected</a>

Current Date: 2/27/2007



# Breeding Bird Atlas Block 6056A

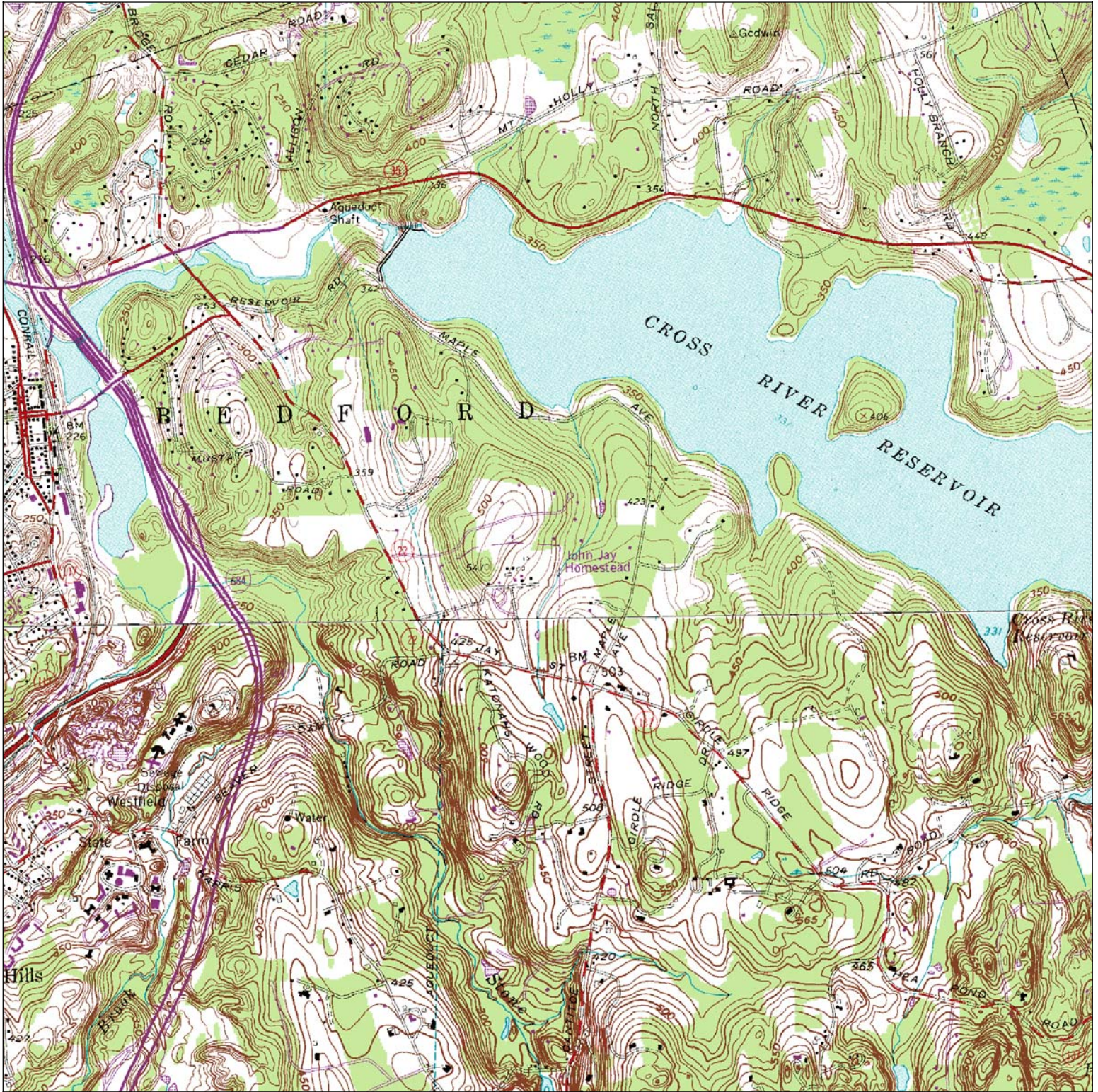


1 Mile

Scale is approximately 1:25,000, but may vary on your printer.



# Breeding Bird Atlas Block 6056B



1 Mile

Scale is approximately 1:25,000, but may vary on your printer.



Appendix E  
Conservation Traffic Study





## **CAPACITY CALCULATIONS APPENDIX A**

### **EXISTING**

Harris Road and Bedford Road Existing AM Peak Hour	1
Huntville Road and New Street Existing AM Peak Hour	2
Harris Road and Bedford Road Existing PM Peak Hour	3
Huntville Road and New Street Existing PM Peak Hour	4

### **NO-BUILD**

Harris Road and Bedford Road No-Build AM Peak Hour	5
Huntville Road and New Street No-Build AM Peak Hour	6
Harris Road and Bedford Road No-Build PM Peak Hour	7
Huntville Road and New Street No-Build PM Peak Hour	8

### **BUILD**

Harris Road and Bedford Road Build AM Peak Hour	9
Huntville Road and New Street Build AM Peak Hour	10
Harris Road and Bedford Road Build PM Peak Hour	11
Huntville Road and New Street Build PM Peak Hour	12



### HCS+™ DETAILED REPORT

General Information	Site Information
Analyst            AAC	Intersection    NYS Route 117 & Harris Road
Agency or Co.   TMA	Area Type       All other areas
Date Performed  9/15/10	Jurisdiction    Town of Bedford
Time Period      AM Peak Hour	Analysis Year   Existing Condition
	Project ID       Tripi Subdivision

Volume and Timing Input													
	EB			WB			NB			SB			
	LT	TH	RT	LT	TH	RT	LT	TH	RT	LT	TH	RT	
Number of Lanes, N <sub>i</sub>	0	1	0	0	1	1	1	1	1	1	1	0	
Lane Group		LTR			LT	R	L	T	R	L	TR		
Volume, V (vph)	4	33	10	92	12	184	21	93	62	129	238	2	
% Heavy Vehicles, %HV	0	0	0	0	0	0	0	0	0	0	0	0	
Peak-Hour Factor, PHF	0.78	0.78	0.78	0.90	0.90	0.90	0.87	0.87	0.87	0.89	0.89	0.89	
Pretimed (P) or Actuated (A)	A	A	A	A	A	A	A	A	A	A	A	A	
Start-up Lost Time, I <sub>l</sub>		2.0			2.0	2.0	2.0	2.0	2.0	2.0	2.0		
Extension of Effective Green, e		2.0			2.0	2.0	2.0	2.0	2.0	2.0	2.0		
Arrival Type, AT		3			3	3	3	3	3	3	3		
Unit Extension, UE		3.0			3.0	3.0	3.0	3.0	3.0	3.0	3.0		
Filtering/Metering, I		1.000			1.000	1.000	1.000	1.000	1.000	1.000	1.000		
Initial Unmet Demand, Q <sub>b</sub>		0.0			0.0	0.0	0.0	0.0	0.0	0.0	0.0		
Ped / Bike / RTOR Volumes	0	0	0	0	0	0	0	0	0	0	0	0	
Lane Width		12.0			12.0	12.0	12.0	12.0	12.0	12.0	12.0		
Parking / Grade / Parking	N	0	N	N	0	N	N	0	N	N	0	N	
Parking Maneuvers, N <sub>m</sub>													
Buses Stopping, N <sub>b</sub>		0			0	0	0	0	0	0	0		
Min. Time for Pedestrians, G <sub>p</sub>		3.2			3.2			3.2			3.2		
Phasing	EW Perm	WB Only	03		04		NS Perm	Excl. Left	07		08		
Timing	G = 16.0	G = 6.0	G =	G =	G = 41.0	G = 11.0	G =	G =					
	Y = 4	Y = 4	Y =	Y =	Y = 4	Y = 4	Y =	Y =					
Duration of Analysis, T = 0.25								Cycle Length, C = 90.0					

Lane Group Capacity, Control Delay, and LOS Determination													
	EB			WB			NB			SB			
	LT	TH	RT	LT	TH	RT	LT	TH	RT	LT	TH	RT	
Adjusted Flow Rate, v		60			115	204	24	107	71	145	269		
Lane Group Capacity, c		322			450	467	757	866	736	896	865		
v/c Ratio, X		0.19			0.26	0.44	0.03	0.12	0.10	0.16	0.31		
Total Green Ratio, g/C		0.18			0.29	0.29	0.62	0.46	0.46	0.62	0.46		
Uniform Delay, d <sub>1</sub>		31.5			24.6	26.0	8.5	14.1	14.0	7.2	15.5		
Progression Factor, PF		1.000			1.000	1.000	1.000	1.000	1.000	1.000	1.000		
Delay Calibration, k		0.11			0.11	0.11	0.11	0.11	0.11	0.11	0.11		
Incremental Delay, d <sub>2</sub>		0.3			0.3	0.7	0.0	0.1	0.1	0.1	0.2		
Initial Queue Delay, d <sub>3</sub>		0.0			0.0	0.0	0.0	0.0	0.0	0.0	0.0		
Control Delay		31.7			24.9	26.7	8.5	14.2	14.0	7.3	15.7		
Lane Group LOS		C			C	C	A	B	B	A	B		
Approach Delay		31.7			26.0			13.5			12.8		
Approach LOS		C			C			B			B		
Intersection Delay		18.3			X <sub>c</sub> = 0.32			Intersection LOS			B		

TWO-WAY STOP CONTROL SUMMARY							
<b>General Information</b>				<b>Site Information</b>			
Analyst	AAC			Intersection	Huntville Road & New Street		
Agency/Co.	TMA			Jurisdiction	Town of Bedford		
Date Performed	9/14/2010			Analysis Year	Existing Condition		
Analysis Time Period	AM Peak Hour						
Project Description <i>Tripi. Subdivision</i>							
East/West Street: <i>Huntville Road</i>				North/South Street: <i>New Street</i>			
Intersection Orientation: <i>East-West</i>				Study Period (hrs): <i>0.25</i>			
<b>Vehicle Volumes and Adjustments</b>							
<b>Major Street</b>	Eastbound			Westbound			
Movement	1	2	3	4	5	6	
	L	T	R	L	T	R	
Volume (veh/h)	16	44	3	1	52	19	
Peak-Hour Factor, PHF	0.88	0.88	0.88	0.49	0.49	0.49	
Hourly Flow Rate, HFR (veh/h)	18	50	3	2	106	38	
Percent Heavy Vehicles	20	--	--	35	--	--	
Median Type	Undivided						
RT Channelized			0			0	
Lanes	0	1	0	0	1	0	
Configuration	LTR			LTR			
Upstream Signal		0			0		
<b>Minor Street</b>	Northbound			Southbound			
Movement	7	8	9	10	11	12	
	L	T	R	L	T	R	
Volume (veh/h)	0	4	10	42	0	9	
Peak-Hour Factor, PHF	0.70	0.70	0.70	0.70	0.70	0.70	
Hourly Flow Rate, HFR (veh/h)	0	5	14	60	0	12	
Percent Heavy Vehicles	10	10	10	10	10	10	
Percent Grade (%)	0			0			
Flared Approach		N			N		
Storage		0			0		
RT Channelized			0			0	
Lanes	0	1	0	0	1	0	
Configuration		LTR			LTR		
<b>Delay, Queue Length, and Level of Service</b>							
Approach	Eastbound	Westbound	Northbound			Southbound	
Movement	1	4	7	8	9	10	11
Lane Configuration	LTR	LTR	LTR			LTR	
v (veh/h)	18	2	19			72	
C (m) (veh/h)	1335	1366	868			719	
v/c	0.01	0.00	0.02			0.10	
95% queue length	0.04	0.00	0.07			0.33	
Control Delay (s/veh)	7.7	7.6	9.2			10.6	
LOS	A	A	A			B	
Approach Delay (s/veh)	--	--	9.2			10.6	
Approach LOS	--	--	A			B	

## HCS+™ DETAILED REPORT

General Information				Site Information			
Analyst	AAC			Intersection	NYS Route 117 & Harris Road		
Agency or Co.	TMA			Area Type	All other areas		
Date Performed	9/15/2010			Jurisdiction	Town of Bedford		
Time Period	PM Peak Hour			Analysis Year	Existing Condition		
				Project ID	Tripi Subdivision		

Volume and Timing Input												
	EB			WB			NB			SB		
	LT	TH	RT	LT	TH	RT	LT	TH	RT	LT	TH	RT
Number of Lanes, N <sub>i</sub>	0	1	0	0	1	1	1	1	1	1	1	0
Lane Group	LTR			LT R			L T R			L TR		
Volume, V (vph)	14	14	4	136	31	240	3	171	93	120	229	16
% Heavy Vehicles, %HV	0	0	0	0	0	0	0	0	0	0	0	0
Peak-Hour Factor, PHF	0.73	0.73	0.73	0.86	0.86	0.86	0.88	0.88	0.88	0.88	0.88	0.88
Pretimed (P) or Actuated (A)	A	A	A	A	A	A	A	A	A	A	A	A
Start-up Lost Time, I <sub>l</sub>		2.0			2.0	2.0	2.0	2.0	2.0	2.0	2.0	
Extension of Effective Green, e		2.0			2.0	2.0	2.0	2.0	2.0	2.0	2.0	
Arrival Type, AT		3			3	3	3	3	3	3	3	
Unit Extension, UE		3.0			3.0	3.0	3.0	3.0	3.0	3.0	3.0	
Filtering/Metering, I		1.000			1.000	1.000	1.000	1.000	1.000	1.000	1.000	
Initial Unmet Demand, Q <sub>b</sub>		0.0			0.0	0.0	0.0	0.0	0.0	0.0	0.0	
Ped / Bike / RTOR Volumes	0	0	0	0	0	0	0	0	0	0	0	0
Lane Width		12.0			12.0	12.0	12.0	12.0	12.0	12.0	12.0	
Parking / Grade / Parking	N	0	N	N	0	N	N	0	N	N	0	N
Parking Maneuvers, N <sub>m</sub>												
Buses Stopping, N <sub>b</sub>		0			0	0	0	0	0	0	0	
Min. Time for Pedestrians, G <sub>p</sub>	3.2			3.2			3.2			3.2		
Phasing	EW Perm	WB Only	03	04	NS Perm	Excl. Left	07	08				
Timing	G = 16.0	G = 12.0	G =	G =	G = 35.0	G = 11.0	G =	G =				
	Y = 4	Y = 4	Y =	Y =	Y = 4	Y = 4	Y =	Y =				
Duration of Analysis, T = 0.25						Cycle Length, C = 90.0						

Lane Group Capacity, Control Delay, and LOS Determination												
	EB			WB			NB			SB		
	LT	TH	RT	LT	TH	RT	LT	TH	RT	LT	TH	RT
Adjusted Flow Rate, v		43			194	279	3	194	106	136	278	
Lane Group Capacity, c		269			575	574	661	739	628	735	732	
v/c Ratio, X		0.16			0.34	0.49	0.00	0.26	0.17	0.19	0.38	
Total Green Ratio, g/C		0.18			0.36	0.36	0.56	0.39	0.39	0.56	0.39	
Uniform Delay, d <sub>1</sub>		31.3			21.2	22.6	11.8	18.7	18.0	11.4	19.7	
Progression Factor, PF		1.000			1.000	1.000	1.000	1.000	1.000	1.000	1.000	
Delay Calibration, k		0.11			0.11	0.11	0.11	0.11	0.11	0.11	0.11	
Incremental Delay, d <sub>2</sub>		0.3			0.4	0.7	0.0	0.2	0.1	0.1	0.3	
Initial Queue Delay, d <sub>3</sub>		0.0			0.0	0.0	0.0	0.0	0.0	0.0	0.0	
Control Delay		31.6			21.6	23.2	11.8	18.9	18.1	11.5	20.0	
Lane Group LOS		C			C	C	B	B	B	B	C	
Approach Delay	31.6			22.6			18.6			17.2		
Approach LOS	C			C			B			B		
Intersection Delay	20.1			X <sub>c</sub> = 0.43			Intersection LOS			C		

TWO-WAY STOP CONTROL SUMMARY							
General Information				Site Information			
Analyst	AAC			Intersection	Huntville Road & New Street		
Agency/Co.	TMA			Jurisdiction	Town of Bedford		
Date Performed	9/14/2010			Analysis Year	Existing Condition		
Analysis Time Period	PM Peak Hour						
Project Description <i>Tripi Subdivision</i>							
East/West Street: <i>Huntville Road</i>				North/South Street: <i>New Street</i>			
Intersection Orientation: <i>East-West</i>				Study Period (hrs): <i>0.25</i>			
Vehicle Volumes and Adjustments							
Major Street	Eastbound			Westbound			
Movement	1	2	3	4	5	6	
	L	T	R	L	T	R	
Volume (veh/h)	3	51	5	2	70	43	
Peak-Hour Factor, PHF	0.51	0.51	0.51	0.55	0.55	0.55	
Hourly Flow Rate, HFR (veh/h)	5	100	9	3	127	78	
Percent Heavy Vehicles	10	--	--	10	--	--	
Median Type	Undivided						
RT Channelized			0			0	
Lanes	0	1	0	0	1	0	
Configuration	LTR			LTR			
Upstream Signal		0			0		
Minor Street	Northbound			Southbound			
Movement	7	8	9	10	11	12	
	L	T	R	L	T	R	
Volume (veh/h)	4	1	3	25	2	6	
Peak-Hour Factor, PHF	0.50	0.50	0.50	0.52	0.52	0.52	
Hourly Flow Rate, HFR (veh/h)	8	2	6	48	3	11	
Percent Heavy Vehicles	10	10	10	10	10	10	
Percent Grade (%)	0			0			
Flared Approach		N			N		
Storage		0			0		
RT Channelized			0			0	
Lanes	0	1	0	0	1	0	
Configuration		LTR			LTR		
Delay, Queue Length, and Level of Service							
Approach	Eastbound	Westbound	Northbound			Southbound	
Movement	1	4	7	8	9	10	11
Lane Configuration	LTR	LTR		LTR			LTR
v (veh/h)	5	3		16			62
C (m) (veh/h)	1320	1433		707			666
v/c	0.00	0.00		0.02			0.09
95% queue length	0.01	0.01		0.07			0.31
Control Delay (s/veh)	7.7	7.5		10.2			11.0
LOS	A	A		B			B
Approach Delay (s/veh)	--	--		10.2			11.0
Approach LOS	--	--		B			B

<b>HCS+™ DETAILED REPORT</b>													
<b>General Information</b>						<b>Site Information</b>							
Analyst	AAC					Intersection	NYS Route 117 & Harris Road						
Agency or Co.	TMA					Area Type	All other areas						
Date Performed	9/15/10					Jurisdiction	Town of Bedford						
Time Period	AM Peak Hour					Analysis Year	No-Build Condition						
						Project ID	Tripi Subdivision						
<b>Volume and Timing Input</b>													
	EB			WB			NB			SB			
	LT	TH	RT	LT	TH	RT	LT	TH	RT	LT	TH	RT	
Number of Lanes, N <sub>i</sub>	0	1	0	0	1	1	1	1	1	1	1	0	
Lane Group	LTR			LT R			L T R			L TR			
Volume, V (vph)	5	38	12	106	14	211	24	107	71	148	274	2	
% Heavy Vehicles, %HV	0	0	0	0	0	0	0	0	0	0	0	0	
Peak-Hour Factor, PHF	0.78	0.78	0.78	0.90	0.90	0.90	0.87	0.87	0.87	0.89	0.89	0.89	
Pretimed (P) or Actuated (A)	A	A	A	A	A	A	A	A	A	A	A	A	
Start-up Lost Time, I <sub>l</sub>		2.0			2.0	2.0	2.0	2.0	2.0	2.0	2.0		
Extension of Effective Green, e		2.0			2.0	2.0	2.0	2.0	2.0	2.0	2.0		
Arrival Type, AT		3			3	3	3	3	3	3	3		
Unit Extension, UE		3.0			3.0	3.0	3.0	3.0	3.0	3.0	3.0		
Filtering/Metering, I		1.000			1.000	1.000	1.000	1.000	1.000	1.000	1.000		
Initial Unmet Demand, Q <sub>b</sub>		0.0			0.0	0.0	0.0	0.0	0.0	0.0	0.0		
Ped / Bike / RTOR Volumes	0	0	0	0	0	0	0	0	0	0	0	0	
Lane Width		12.0			12.0	12.0	12.0	12.0	12.0	12.0	12.0		
Parking / Grade / Parking	N	0	N	N	0	N	N	0	N	N	0	N	
Parking Maneuvers, N <sub>m</sub>													
Buses Stopping, N <sub>b</sub>		0			0	0	0	0	0	0	0		
Min. Time for Pedestrians, G <sub>p</sub>	3.2			3.2			3.2			3.2			
Phasing	EW Perm	WB Only	03	04	NS Perm	Excl. Left	07	08					
Timing	G = 16.0	G = 6.0	G =	G =	G = 41.0	G = 11.0	G =	G =					
	Y = 4	Y = 4	Y =	Y =	Y = 4	Y = 4	Y =	Y =					
Duration of Analysis, T = 0.25						Cycle Length, C = 90.0							
<b>Lane Group Capacity, Control Delay, and LOS Determination</b>													
	EB			WB			NB			SB			
	LT	TH	RT	LT	TH	RT	LT	TH	RT	LT	TH	RT	
Adjusted Flow Rate, v		70			134	234		28	123	82		166	310
Lane Group Capacity, c		321			450	467		721	866	736		888	865
v/c Ratio, X		0.22			0.30	0.50		0.04	0.14	0.11		0.19	0.36
Total Green Ratio, g/C		0.18			0.29	0.29		0.62	0.46	0.46		0.62	0.46
Uniform Delay, d <sub>1</sub>		31.6			24.9	26.6		9.2	14.3	14.1		7.4	15.9
Progression Factor, PF		1.000			1.000	1.000		1.000	1.000	1.000		1.000	1.000
Delay Calibration, k		0.11			0.11	0.11		0.11	0.11	0.11		0.11	0.11
Incremental Delay, d <sub>2</sub>		0.3			0.4	0.9		0.0	0.1	0.1		0.1	0.3
Initial Queue Delay, d <sub>3</sub>		0.0			0.0	0.0		0.0	0.0	0.0		0.0	0.0
Control Delay		32.0			25.3	27.5		9.2	14.3	14.1		7.5	16.2
Lane Group LOS		C			C	C		A	B	B		A	B
Approach Delay	32.0			26.7			13.6			13.2			
Approach LOS	C			C			B			B			
Intersection Delay	18.7			X <sub>c</sub> = 0.37			Intersection LOS			B			

TWO-WAY STOP CONTROL SUMMARY							
<b>General Information</b>				<b>Site Information</b>			
Analyst	AAC			Intersection	Huntville Road & New Street		
Agency/Co.	TMA			Jurisdiction	Town of Bedford		
Date Performed	9/14/2010			Analysis Year	No-Build Condition		
Analysis Time Period	AM Peak Hour						
Project Description <i>Tripi. Subdivision</i>							
East/West Street: <i>Huntville Road</i>				North/South Street: <i>New Street</i>			
Intersection Orientation: <i>East-West</i>				Study Period (hrs): <i>0.25</i>			
<b>Vehicle Volumes and Adjustments</b>							
<b>Major Street</b>	Eastbound			Westbound			
Movement	1	2	3	4	5	6	
	L	T	R	L	T	R	
Volume (veh/h)	18	51	3	1	60	22	
Peak-Hour Factor, PHF	0.88	0.88	0.88	0.49	0.49	0.49	
Hourly Flow Rate, HFR (veh/h)	20	57	3	2	122	44	
Percent Heavy Vehicles	20	--	--	35	--	--	
Median Type	Undivided						
RT Channelized			0				0
Lanes	0	1	0	0	1		0
Configuration	LTR			LTR			
Upstream Signal		0			0		
<b>Minor Street</b>	Northbound			Southbound			
Movement	7	8	9	10	11	12	
	L	T	R	L	T	R	
Volume (veh/h)	0	5	12	48	0	10	
Peak-Hour Factor, PHF	0.70	0.70	0.70	0.70	0.70	0.70	
Hourly Flow Rate, HFR (veh/h)	0	7	17	68	0	14	
Percent Heavy Vehicles	10	10	10	10	10	10	
Percent Grade (%)	0			0			
Flared Approach		N			N		
Storage		0			0		
RT Channelized			0				0
Lanes	0	1	0	0	1		0
Configuration		LTR			LTR		
<b>Delay, Queue Length, and Level of Service</b>							
Approach	Eastbound	Westbound	Northbound			Southbound	
Movement	1	4	7	8	9	10	11
Lane Configuration	LTR	LTR	LTR			LTR	
v (veh/h)	20	2	24			82	
C (m) (veh/h)	1310	1357	838			683	
v/c	0.02	0.00	0.03			0.12	
95% queue length	0.05	0.00	0.09			0.41	
Control Delay (s/veh)	7.8	7.7	9.4			11.0	
LOS	A	A	A			B	
Approach Delay (s/veh)	--	--	9.4			11.0	
Approach LOS	--	--	A			B	