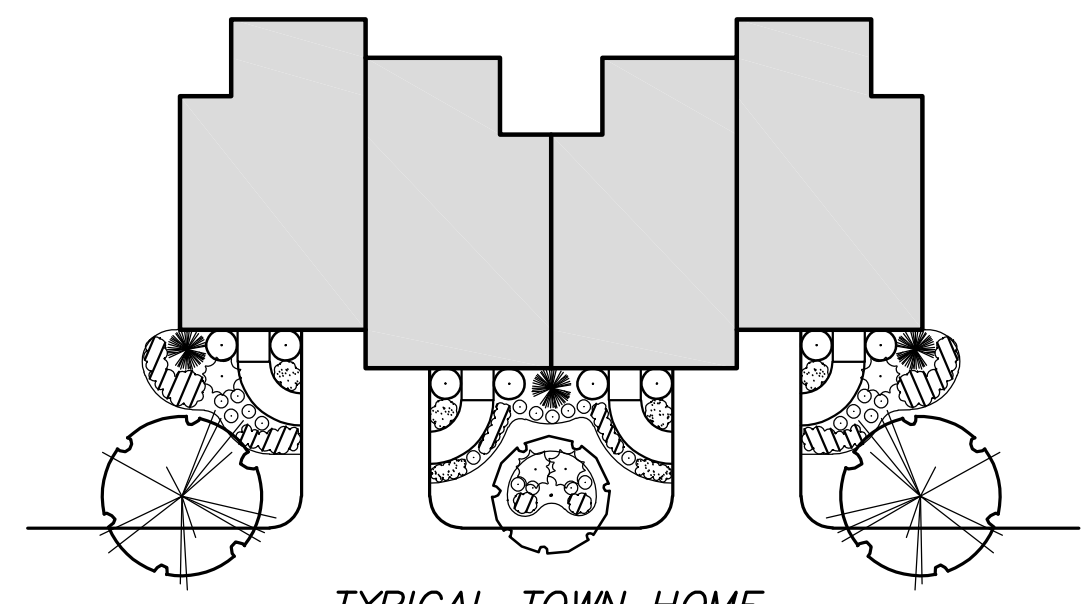


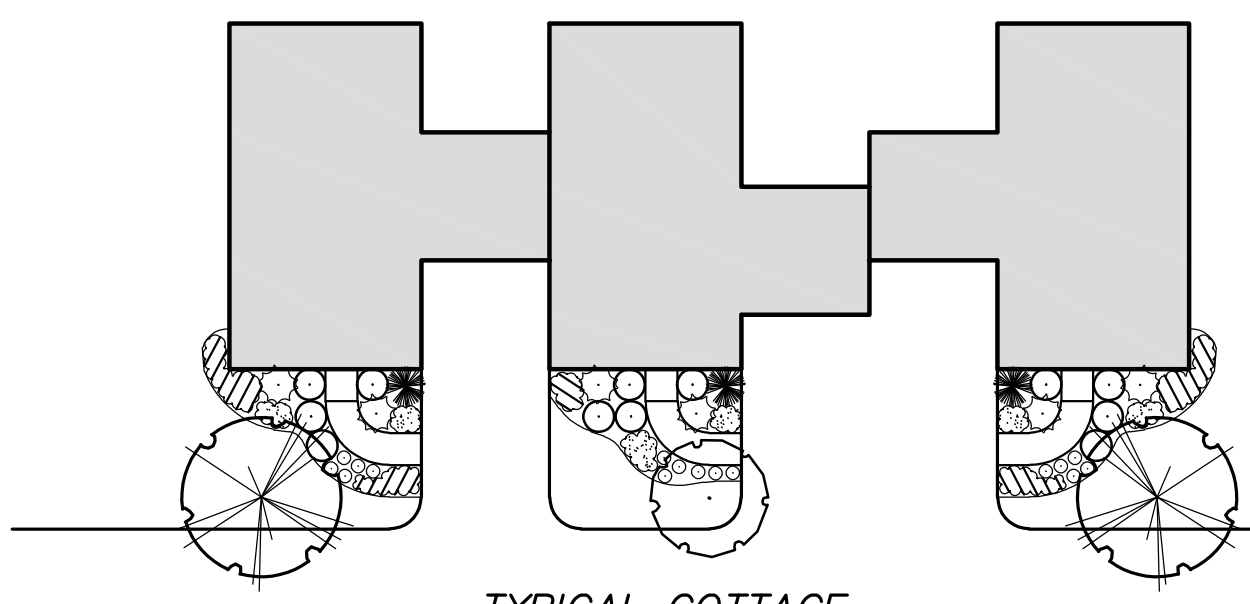
MATCHLINE TO SP-25
MATCHLINE TO SP-22

MATCHLINE TO SP-26
MATCHLINE TO SP-24

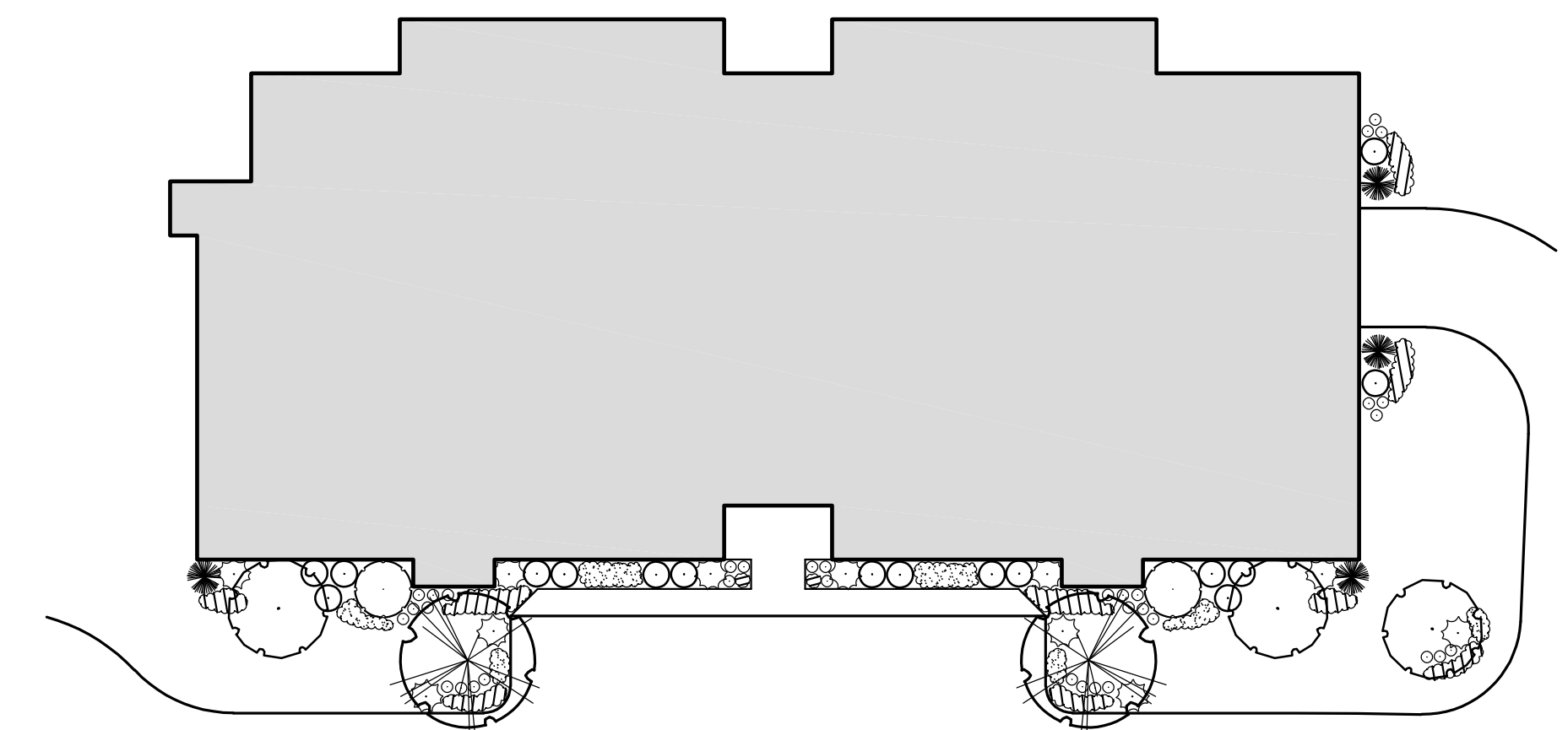
MATCHLINE TO SP-23
MATCHLINE TO SP-24



TYPICAL TOWN HOME
LANDSCAPE PLAN
SCALE: 1" = 30'



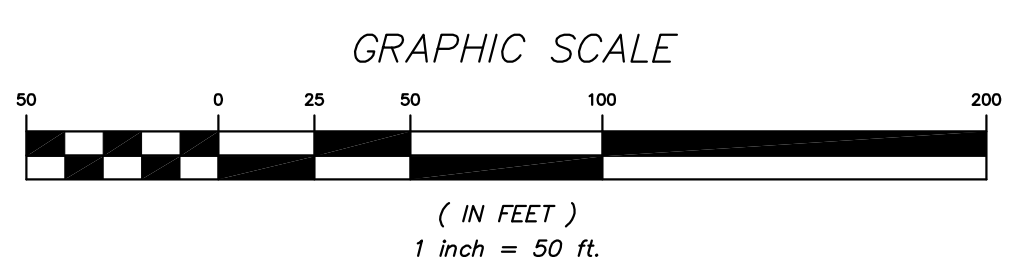
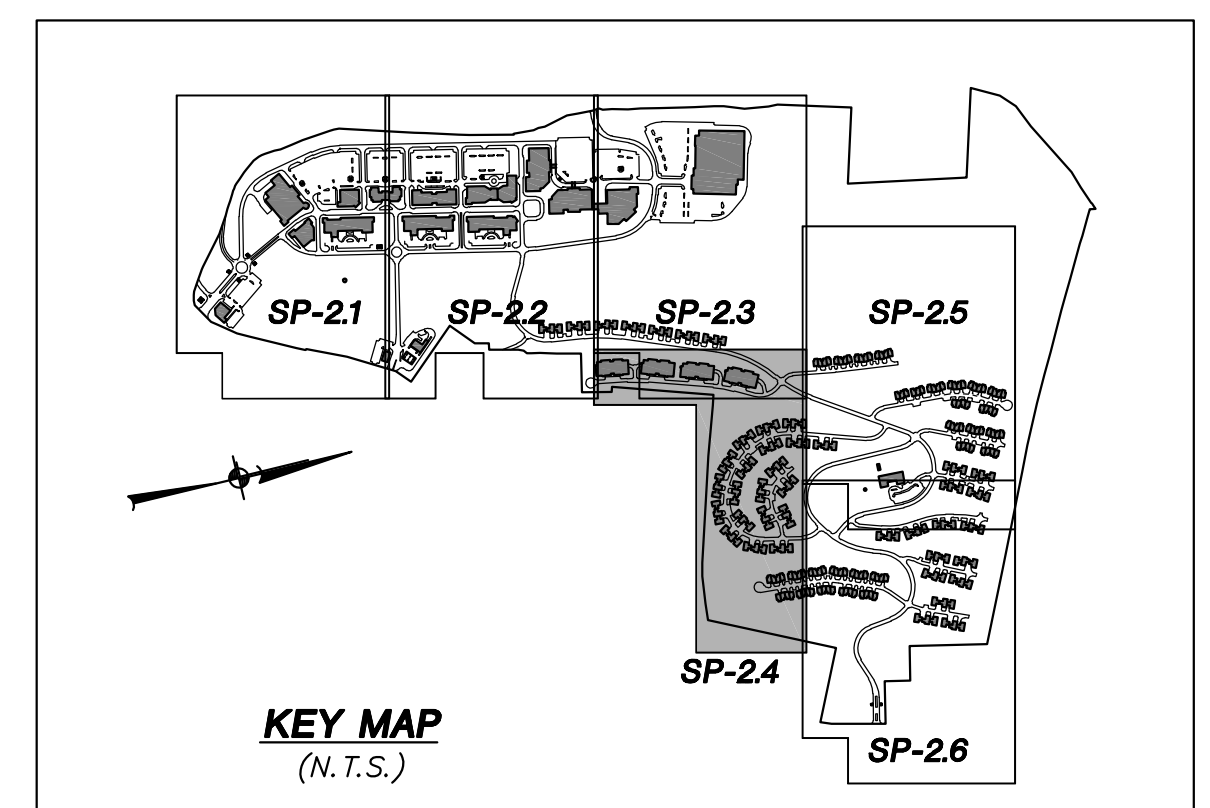
TYPICAL COTTAGE
LANDSCAPE PLAN
SCALE: 1" = 30'



TYPICAL MULTIFAMILY
LANDSCAPE PLAN
SCALE: 1" = 30'

TYPICAL LANDSCAPE PLANT LIST (Drawings SP-2.1, 2.2, 2.3, 2.4, 2.5 & 2.6)

SYMBOL	BOTANICAL/COMMON NAME	SIZE	ROOT	SYMBOL	BOTANICAL/COMMON NAME	SIZE	ROOT
●	Evergreen Trees:			●	Shrubs:		
●	<i>Ilex opaca</i> / American Holly	5'-6" HT.	B&B	●	<i>Aronia arbutifolia</i> 'Brilliantissima' / Red Chokeberry	5 GAL.	CONT.
●	<i>Juniperus virginiana</i> / Eastern Red Cedar	5'-6" HT.	B&B	●	<i>Azalea</i> variety / Azalea	5 GAL.	CONT.
●	<i>Picea abies</i> / Norway Spruce	7'-8" HT.	B&B	●	<i>Ceanothus americanus</i> / New Jersey Tea	5 GAL.	CONT.
●	<i>Picea glauca</i> / White Spruce	7'-8" HT.	B&B	●	<i>Clethra alnifolia</i> / Summersweet	5 GAL.	CONT.
●	<i>Picea omorika</i> / Serbian Spruce	7'-8" HT.	B&B	●	<i>Cornus amomum</i> / Silky Dogwood	5 GAL.	CONT.
●	<i>Picea pungens</i> / Colorado Spruce	7'-8" HT.	B&B	●	<i>Cornus sericea</i> / Red-osier Dogwood	5 GAL.	CONT.
●	<i>Pinus nigra</i> / Austrian Pine	7'-8" HT.	B&B	●	<i>Fothergilla major</i> / Mountain Witchhazel	5 GAL.	CONT.
●	<i>Pinus strobus</i> / Eastern White Pine	7'-8" HT.	B&B	●	<i>Hamamelis virginiana</i> / Virginia Witchhazel	5 GAL.	CONT.
●	<i>Pseudotsuga mansueti</i> / Douglas Fir	7'-8" HT.	B&B	●	<i>Ilex glabra</i> / Inkberry	5 GAL.	CONT.
●	<i>Thuja occidentalis</i> / American Arborvitae	7'-8" HT.	B&B	●	<i>Ilex verticillata</i> / Winterberry	5 GAL.	CONT.
●	<i>Tsuga canadensis</i> / Canadian Hemlock	6'-7" HT.	B&B	●	<i>Itea virginica</i> / Henry's Garnet Itea	5 GAL.	CONT.
●	Shade Trees:			●	<i>Juniperus davurica</i> 'Parson' / Parson's Juniper	5 GAL.	CONT.
●	<i>Acer pensylvanicum</i> / Striped Maple	2" CAL.	B&B	●	<i>Juniperus horizontalis</i> 'plumosa' / Andorra Juniper	5 GAL.	CONT.
●	<i>Acer rubrum</i> / Red Maple	3" CAL.	B&B	●	<i>Juniperus pfitzeriana</i> 'Sea Green' / Sea Green Juniper	5 GAL.	CONT.
●	<i>Acer saccharum</i> / Sugar Maple	3" CAL.	B&B	●	<i>Kalmia latifolia</i> / Mountain Laurel	5 GAL.	CONT.
●	<i>Betula nigra</i> / River Birch	8"-10" HT.	B&B	●	<i>Myrica pensylvanica</i> / Northern Bayberry	5 GAL.	CONT.
●	<i>Betula papyrifera</i> / Paper Birch	8"-10" HT.	B&B	●	<i>Physocarpus opulifolius</i> / Common Ninebark	5 GAL.	CONT.
●	<i>Carpinus caroliniana</i> / American Hornbeam	2" CAL.	B&B	●	<i>Potentilla fruticosa</i> / Bush Cinquefoil	5 GAL.	CONT.
●	<i>Corypa ovata</i> / Shagbark Hickory	2" CAL.	B&B	●	<i>Prunus x cistena</i> / Purpleleaf Sand Cherry	5 GAL.	CONT.
●	<i>Celtis occidentalis</i> / Common Hackberry	3" CAL.	B&B	●	<i>Rhododendron catawbiense</i> / Catawba Rhododendron	5 GAL.	CONT.
●	<i>Fagus grandifolia</i> / American Beech	8"-10" HT.	B&B	●	<i>Rhododendron maximum</i> / Rosebay Rhododendron	5 GAL.	CONT.
●	<i>Gleditsia triacanthos inermis</i> / Shademoor Honeylocust	3" CAL.	B&B	●	<i>Rhododendron 'PJM'</i> / PJM Rhododendron	5 GAL.	CONT.
●	<i>Liquidambar styraciflua</i> / Sweetgum	3" CAL.	B&B	●	<i>Sambucus canadensis</i> / Common Elderberry	5 GAL.	CONT.
●	<i>Platanus occidentalis</i> / Sycamore	3" CAL.	B&B	●	<i>Spiraea bumalda</i> 'Gold Mound' / Gold Mound Spirea	3 GAL.	CONT.
●	<i>Quercus alba</i> / White Oak	3" CAL.	B&B	●	<i>Spiraea x vanhouttei</i> / Vanhouttei Spirea	3 GAL.	CONT.
●	<i>Quercus palustris</i> / Pin Oak	3" CAL.	B&B	●	<i>Taxus canadensis</i> / Canada Yew	5 GAL.	CONT.
●	<i>Quercus rubra</i> / Red Oak	3" CAL.	B&B	●	<i>Viburnum dentatum</i> / Arrowwood Viburnum	5 GAL.	CONT.
●	<i>Tilia americana</i> / American Linden (Basswood)	2" CAL.	B&B	●	<i>Viburnum prunifolium</i> / Black Haw	5 GAL.	CONT.
●	<i>Ulmus americana</i> / American Elm	3" CAL.	B&B	●	<i>Viburnum trilobum</i> / American Cranberry-bush	5 GAL.	CONT.
●	Flowering Trees:			●	Perennials / Grasses / Groundcovers		
●	<i>Amelanchier canadensis</i> / Shadblow Serviceberry	8"-10" HT.	B&B	●	<i>Athyrium filix-femina</i> / Ladyfern	2 GAL.	CONT.
●	<i>Pyrus calleryana</i> 'Bradford' / Bradford Pear	2" CAL.	B&B	●	<i>Coreopsis verticillata</i> / Threadleaf Tickseed	2 GAL.	CONT.
●	<i>Cercis canadensis</i> / Eastern Redbud	8"-10" HT.	B&B	●	<i>Hemerocallis</i> spp. / Daylily	2 GAL.	CONT.
●	<i>Cornus alternifolia</i> / Pagoda Dogwood	7'-8" HT.	B&B	●	<i>Lirigpa muscari</i> 'Big Blue' / Big Blue Lirigpa	2 GAL.	CONT.
●	<i>Cornus florida</i> / Flowering Dogwood	8"-10" HT.	B&B	●	<i>Panicum virgatum</i> 'Heavy Metal' / Blue Switch Grass	2 GAL.	CONT.
●	<i>Crataegus aragalli</i> / Cockspur Hawthorn	2" CAL.	B&B	●	<i>Panicum virg.</i> 'Shenandoah' / Shenandoah Switch Grass	2 GAL.	CONT.
●	<i>Crataegus phoenicopyrum</i> / Washington Hawthorn	2" CAL.	B&B	●	<i>Perovskia atriplicifolia</i> / Russian Sage	2 GAL.	CONT.
●	<i>Malus 'Centurion'</i> / Centurion Crabapple	7'-8" HT.	B&B	●	<i>Rosa 'The Fairy'</i> / Fairy Rose	2 GAL.	CONT.
●	<i>Prunus maritima</i> / Beach Plum	7'-8" HT.	B&B	●	<i>Rosa rugosa</i> / Beach Rose	2 GAL.	CONT.



TYPICAL DWELLING PLANT LIST (See note below)

KEY	BOTANICAL/COMMON NAME	SIZE	ROOT
●	Shade Trees:		
●	<i>Acer rubrum</i> / 'October Glory' / October Glory Red Maple	2-2 1/2" CAL.	B&B
●	<i>Celtis laevigata</i> / Common Hackberry	2-2 1/2" CAL.	B&B
●	<i>Quercus rubra</i> / Red Oak	2-2 1/2" CAL.	B&B
●	Flowering Trees:		
●	<i>Cercis canadensis</i> / Eastern Redbud	7'-8" HT.	B&B
●	<i>Cornus florida</i> / Flowering Dogwood	7'-8" HT.	B&B
●	<i>Prunus x yedoensis</i> / Yoshino Cherry	7'-8" HT.	B&B
●	Large Shrubs:		
●	<i>Rhododendron maximum</i> / Rosebay Rhododendron	5 GAL.	CONT.
●	<i>Spiraea x vanhouttei</i> / Vanhouttei Spirea	5 GAL.	CONT.
●	<i>Viburnum trilobum</i> / American Cranberry-bush	5 GAL.	CONT.
●	Small Shrubs:		
●	<i>Cotoneaster horizontalis</i> / Rockspray Cotoneaster	2 GAL.	CONT.
●	<i>Hypericum kalmianum</i> / St. John Wort	2 GAL.	CONT.
●	<i>Potentilla fruticosa</i> / Bush Cinquefoil	2 GAL.	CONT.
●	<i>Rhododendron 'Purple Gem'</i> / Purple Gem Rhododendron	2 GAL.	CONT.
●	<i>Spiraea x bumalda</i> / Anthony Waterer Spirea	2 GAL.	CONT.
●	Evergreen Shrubs:		
●	<i>Ilex glabra compacta</i> / Compact Inkberry	2-3" HT.	B&B
●	<i>Picea nudaiformis</i> / Bird's Nest Spruce	2" HT.	B&B
●	<i>Pinus Mugo</i> / Mugo Pine	2" HT.	B&B
●	Ground Covers:		
●	<i>Hemerocallis</i> spp. / Daylily	1 GAL.	CONT.
●	<i>Juniperus horizontalis</i> / Creeping Juniper	2 GAL.	CONT.

NOTE: Plant material specified for dwelling unit landscape plans will vary by unit due to sun orientation.

INSITE
ENGINEERING, SURVEYING &
LANDSCAPE ARCHITECTURE, P.C.

3 Garrett Place
Carmel, NY 10512
(845) 225-9690
(845) 225-9717 fax
www.insite-eng.com

PROJECT: UNION PLACE
ROUTE 6 & BALDWIN PLACE ROAD, TOWN OF CARMEL, PUTNAM COUNTY, NEW YORK

DRAWING: LAYOUT AND LANDSCAPE PLAN

PROJECT NO.	02119.100	PROJECT MANAGER	J.J.C.	DRAWING NO.	SP-2.4
DATE	06-18-10	DRAWN BY	S.J.C.	SHEET	7
SCALE	1" = 50'	CHECKED BY	R.D.W.		32

NOTE: REFER TO DRAWING SP.2.1 FOR LEGEND, SIGN TABLE AND NOTES.

ALTERATION OF THIS DOCUMENT, UNLESS UNDER THE DIRECTION OF A LICENSED PROFESSIONAL ENGINEER, IS A VIOLATION OF SECTION 2209 OF ARTICLE 145 OF THE EDUCATION LAW.