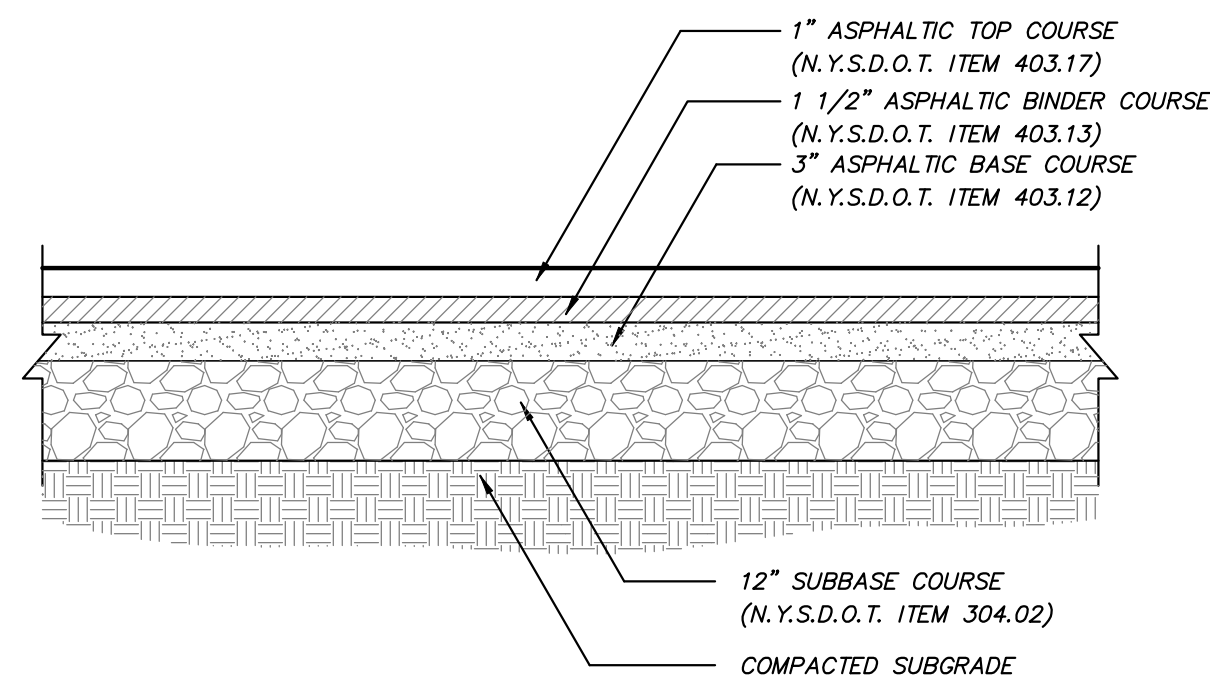
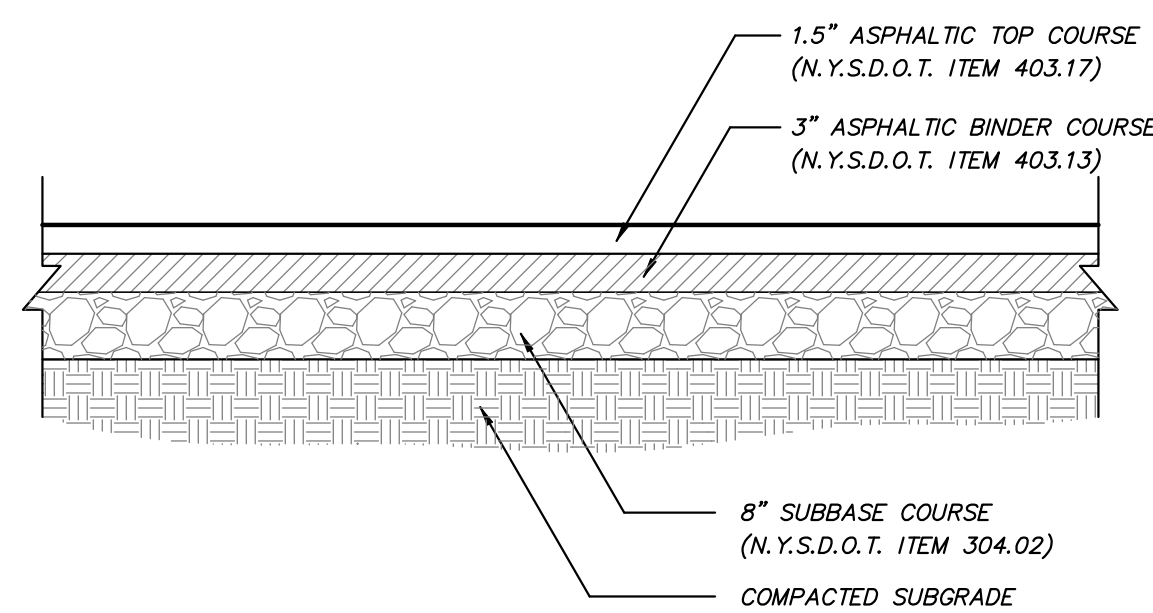


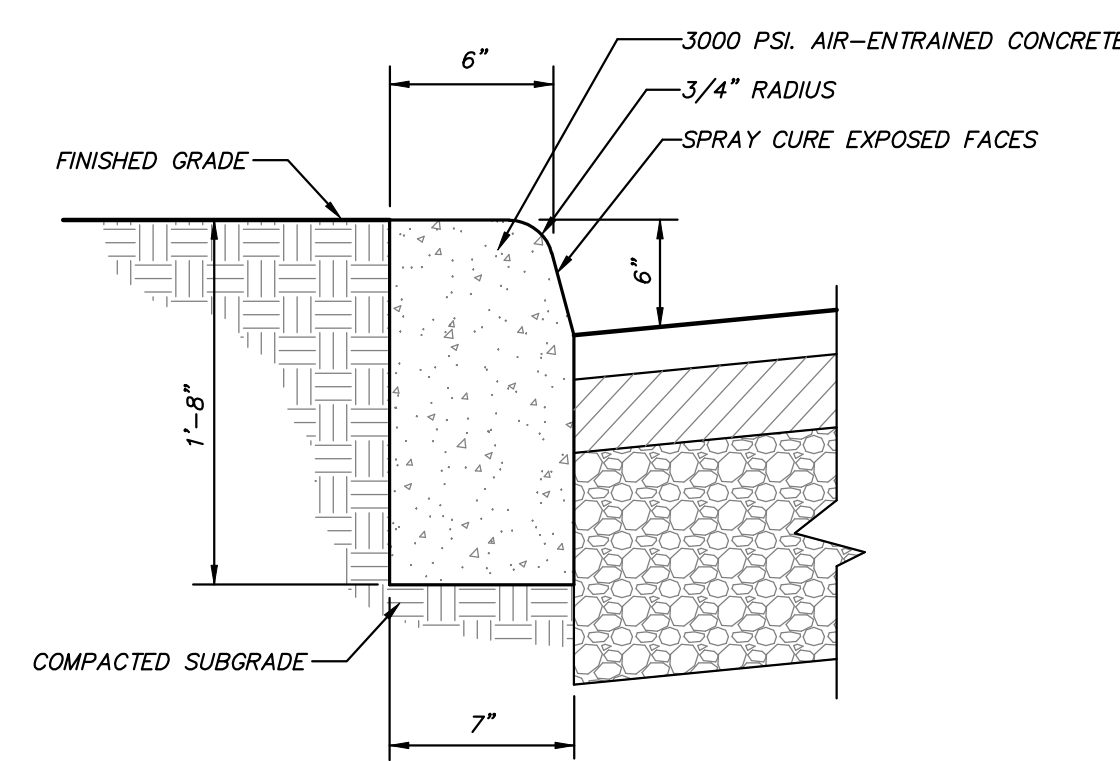
ACCESS ROAD DETAIL
(N.T.S.)



SITE PAVEMENT SECTION DETAIL
(FOR ALL ACCESS AISLE AREAS)
(N.T.S.)

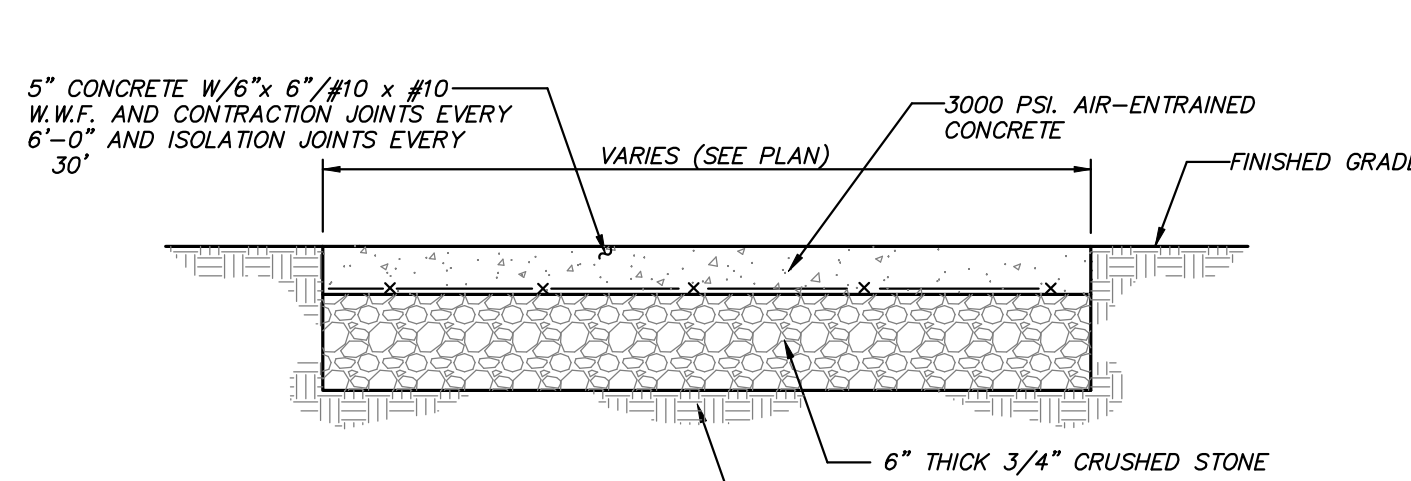


PARKING SPACE PAVEMENT SECTION DETAIL
(FOR ALL PARKING SPACES)
(N.T.S.)

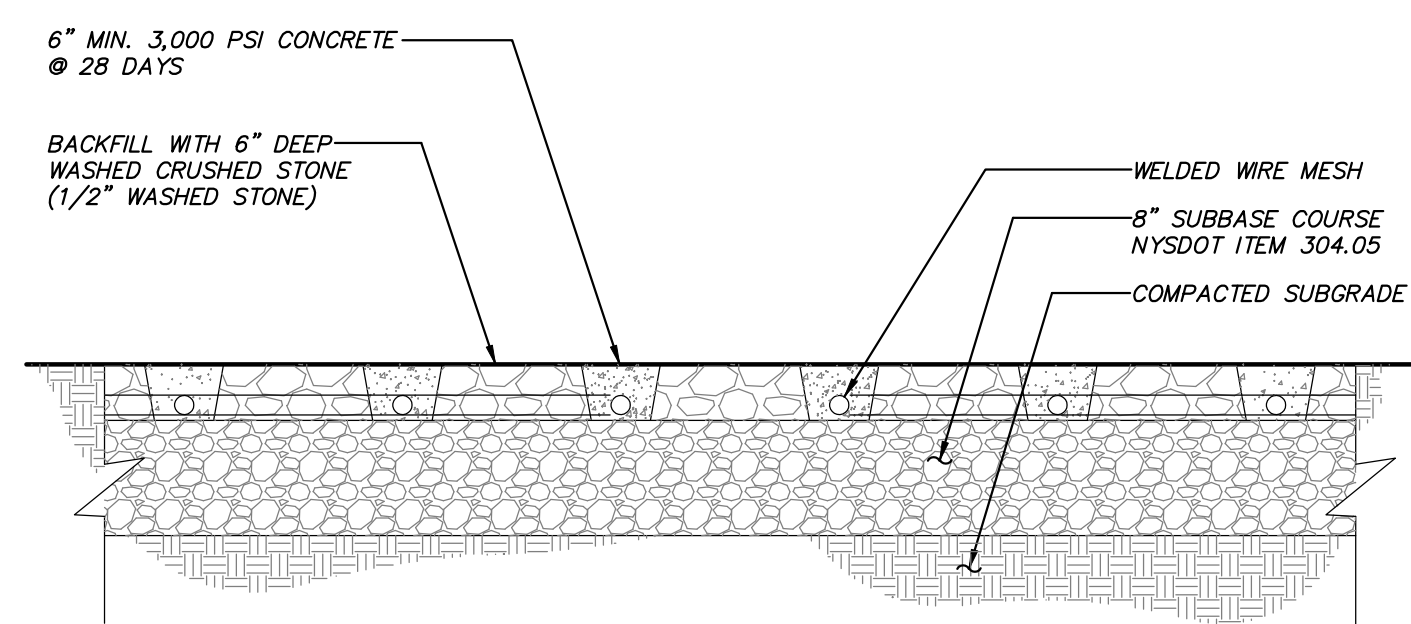


NOTE: ISOLATION JOINTS 1/2" WIDE SHALL BE INSTALLED IN THE CURB 20'-0" APART AND SHALL BE FILLED WITH CELLULAR COMPRESSION MATERIALS AS SPECIFIED, RECESSED 1/4" IN FROM FRONT FACE AND TOP OF CURB.

SITE CONCRETE CURB DETAIL
(N.T.S.)

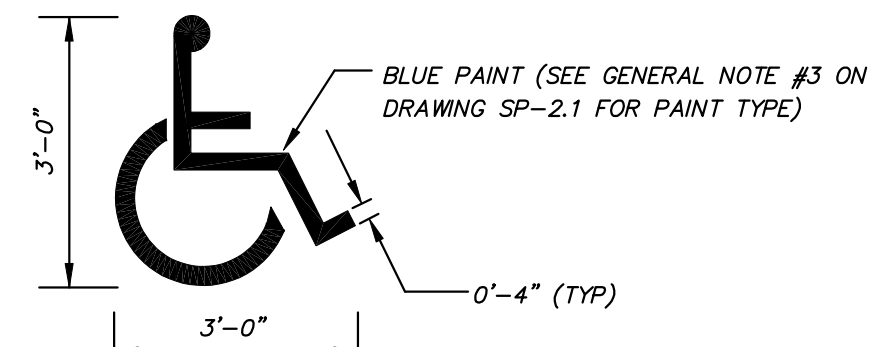


CONCRETE SIDEWALK DETAIL
(N.T.S.)

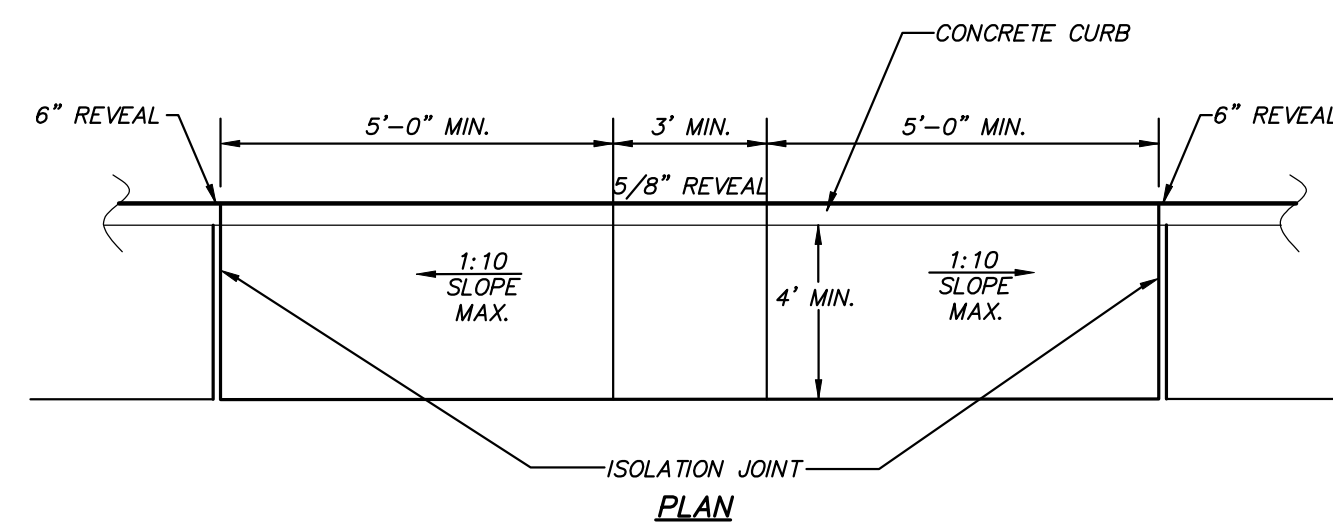


NOTES:
1. USE GRASSCRETE® TYPE GC2 FORMERS AS MANUFACTURED BY GRASS CONCRETE LIMITED, WEST YORKSHIRE, ENGLAND.
2. USE AUTHORIZED INSTALLER OF GRASSCRETE® PAVEMENT.

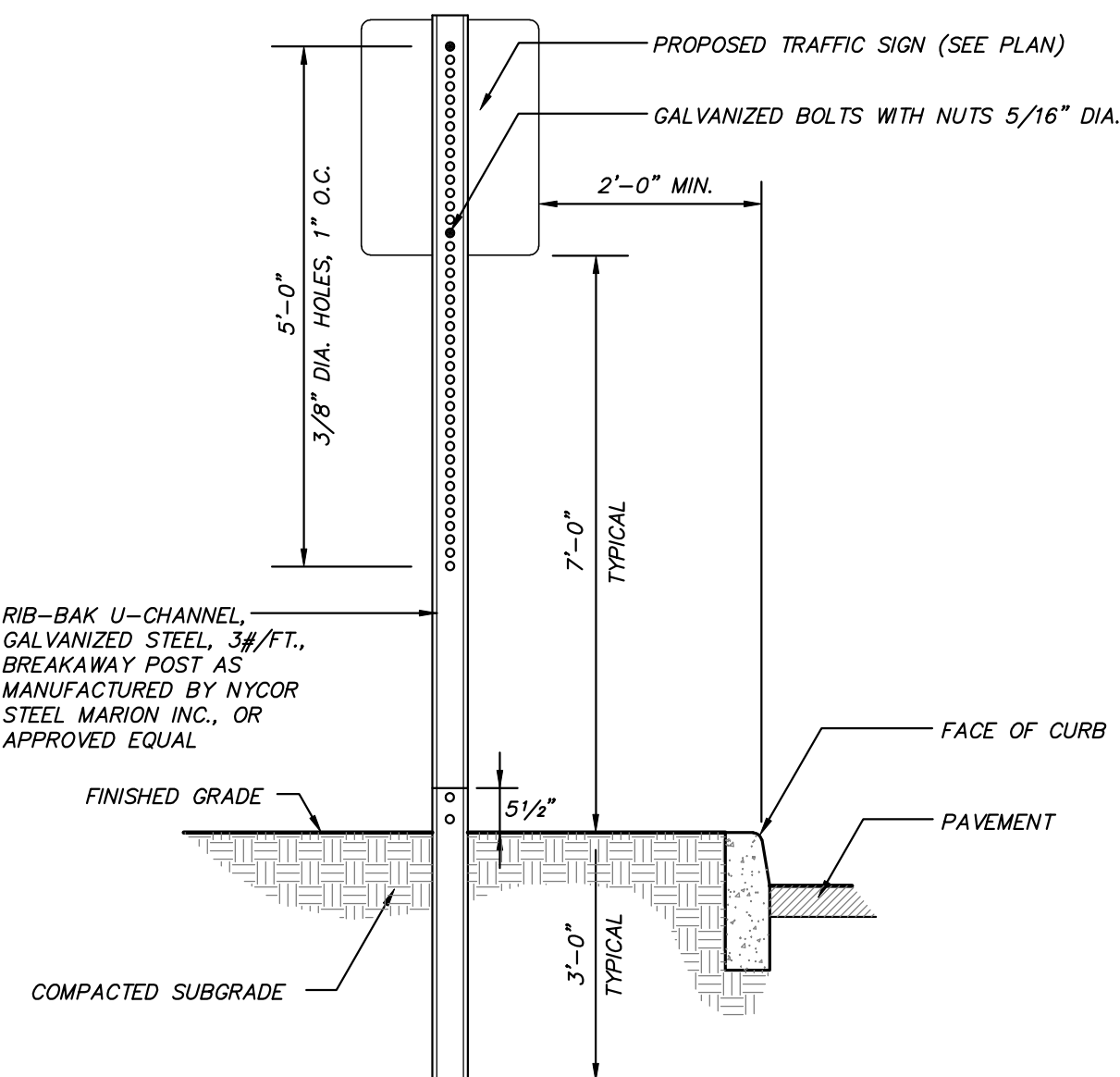
"GRASSCRETE" PAVEMENT DETAIL
(N.T.S.)



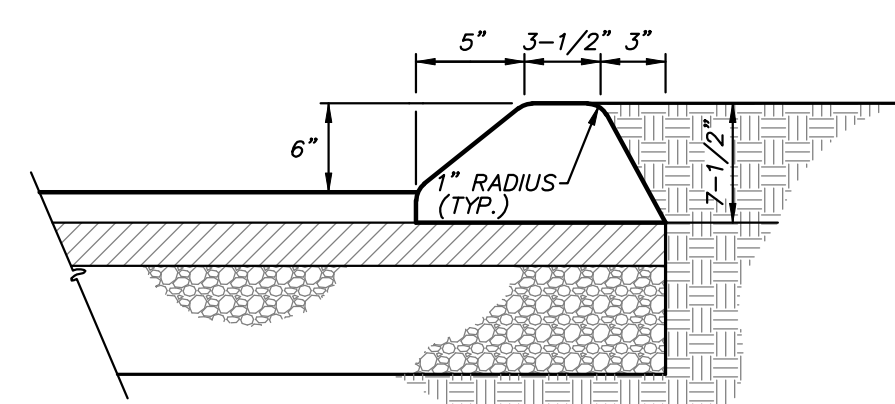
PAINTED HANDICAP SYMBOL DETAIL
(N.T.S.)



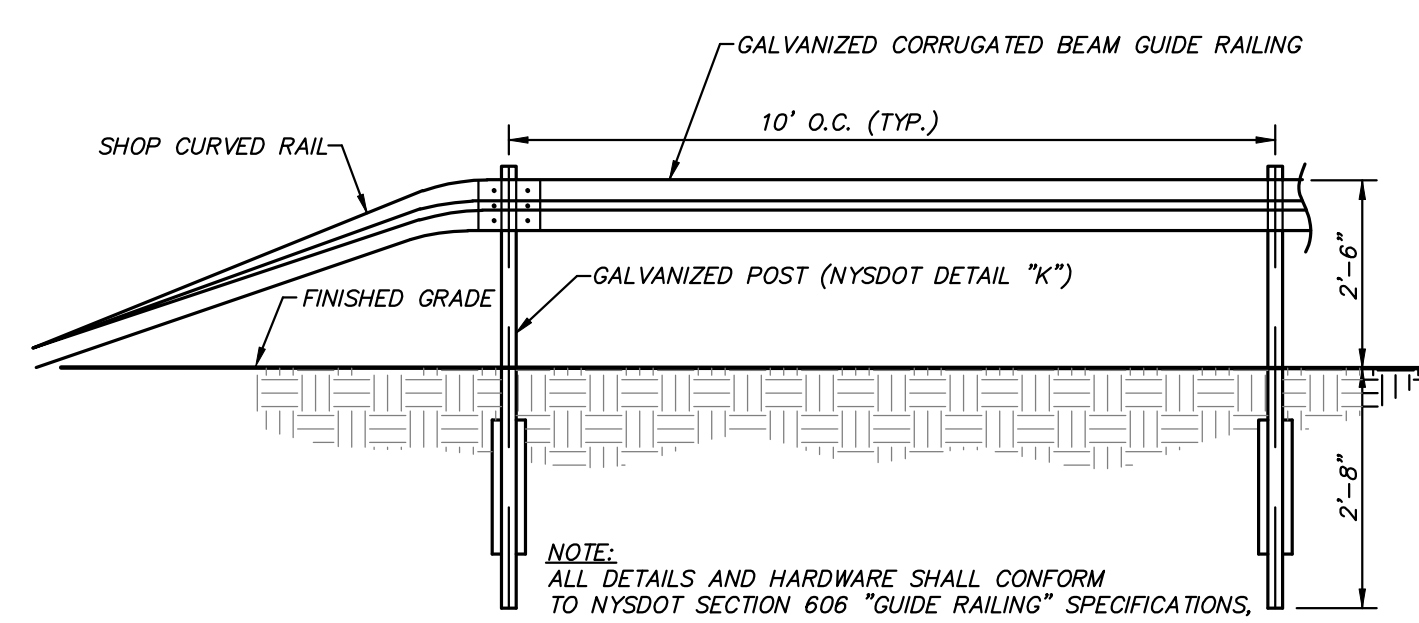
DROP CURB AND RAMP DETAIL
(N.T.S.)



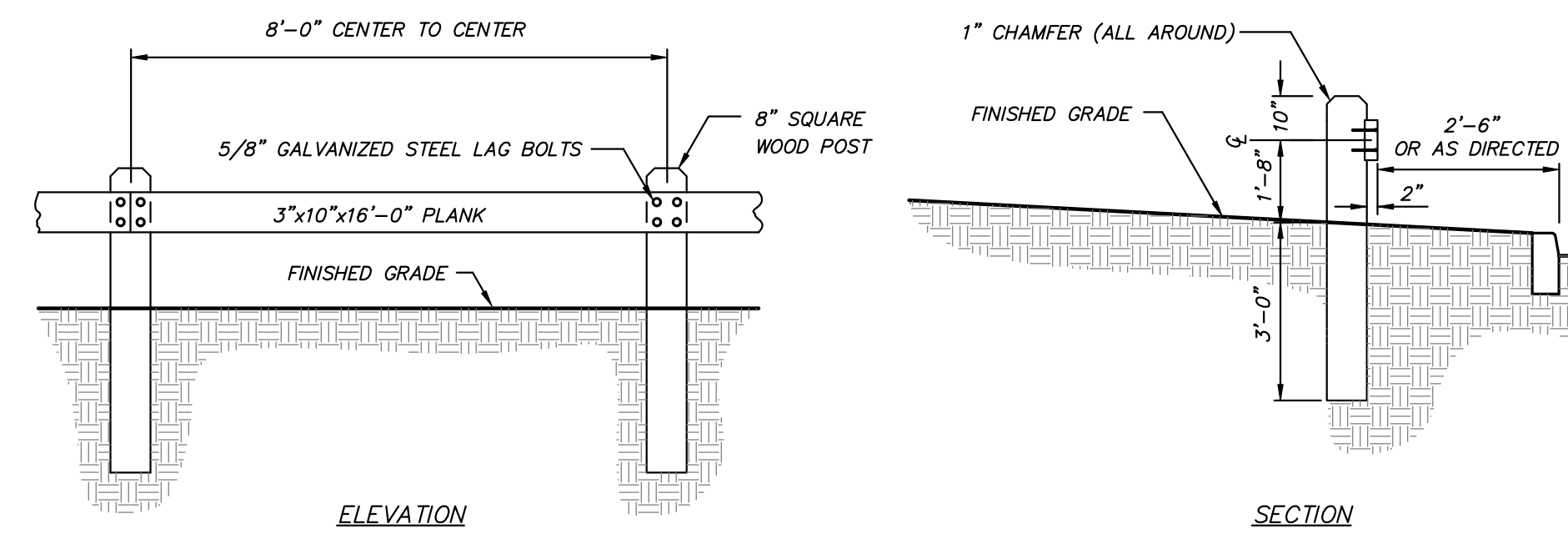
TRAFFIC SIGN DETAIL
(N.T.S.)



ASPHALT CURB DETAIL
(N.T.S.)

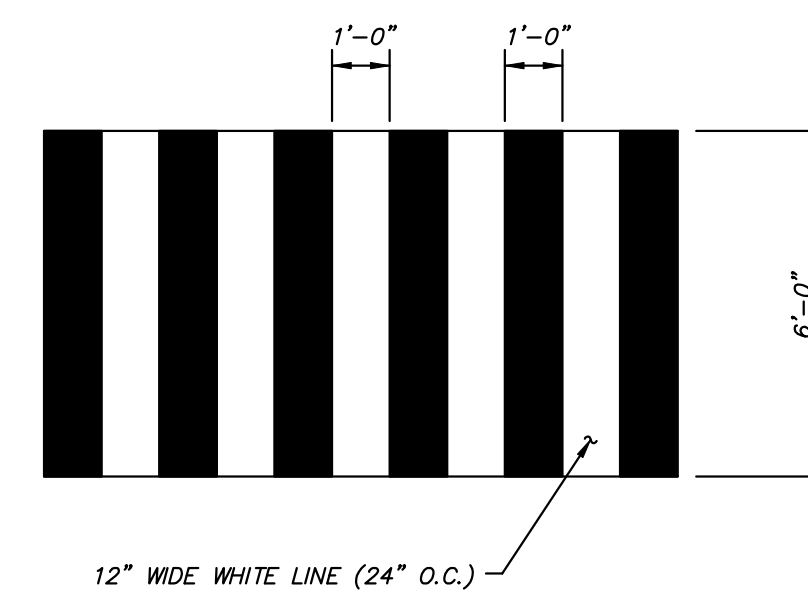


CORRUGATED BEAM GUIDE RAIL DETAIL
(N.T.S.)

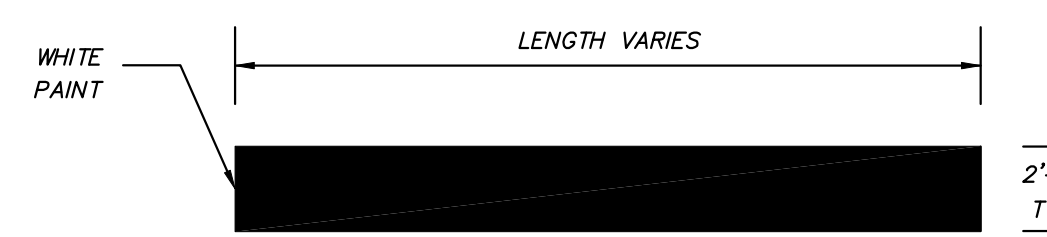


NOTES:
1. ALL WOOD TO BE SEASONED NO.1 DOUGLAS FIR, SOUTHERN PINE OR OTHER APPROVED STRUCTURAL LUMBER.
2. ALL WOOD TO BE TREATED WITH AN APPROVED WOOD PRESERVATIVE SUITABLE FOR INSTALLATION IN AND ADJACENT TO GROUND SURFACES.

WOOD GUIDE RAIL DETAIL
(N.T.S.)



CROSSWALK MARKING DETAIL
(N.T.S.)



PAINTED STOP BAR DETAIL
(N.T.S.)

NO.	DATE	REVISION	BY
INSITE ENGINEERING, SURVEYING & LANDSCAPE ARCHITECTURE, P.C.			
PROJECT: UNION PLACE <small>ROUTE 6 & BALDWIN PLACE ROAD, TOWN OF CARMEL, PUTNAM COUNTY, NEW YORK</small>			
DRAWING: SITE DETAILS			
PROJECT NO.	02119.100	PROJECT MANAGER	J.J.C.
DATE	06-18-10	DRAWN BY	K.M.W.
SCALE	AS SHOWN	CHECKED BY	R.D.W.
DRAWING NO.	D-1		SHEET 28
			32

2:021200000 01 1 4.dwg 1/20/2010 2:15:17 PM, www.11

ALTERATION OF THIS DOCUMENT, UNLESS UNDER THE DIRECTION OF A LICENSED PROFESSIONAL ENGINEER, IS A VIOLATION OF SECTION 2209 OF ARTICLE 145 OF THE EDUCATION LAW.