

PLAN VIEW
SCALE: 1/4" = 1'-0"

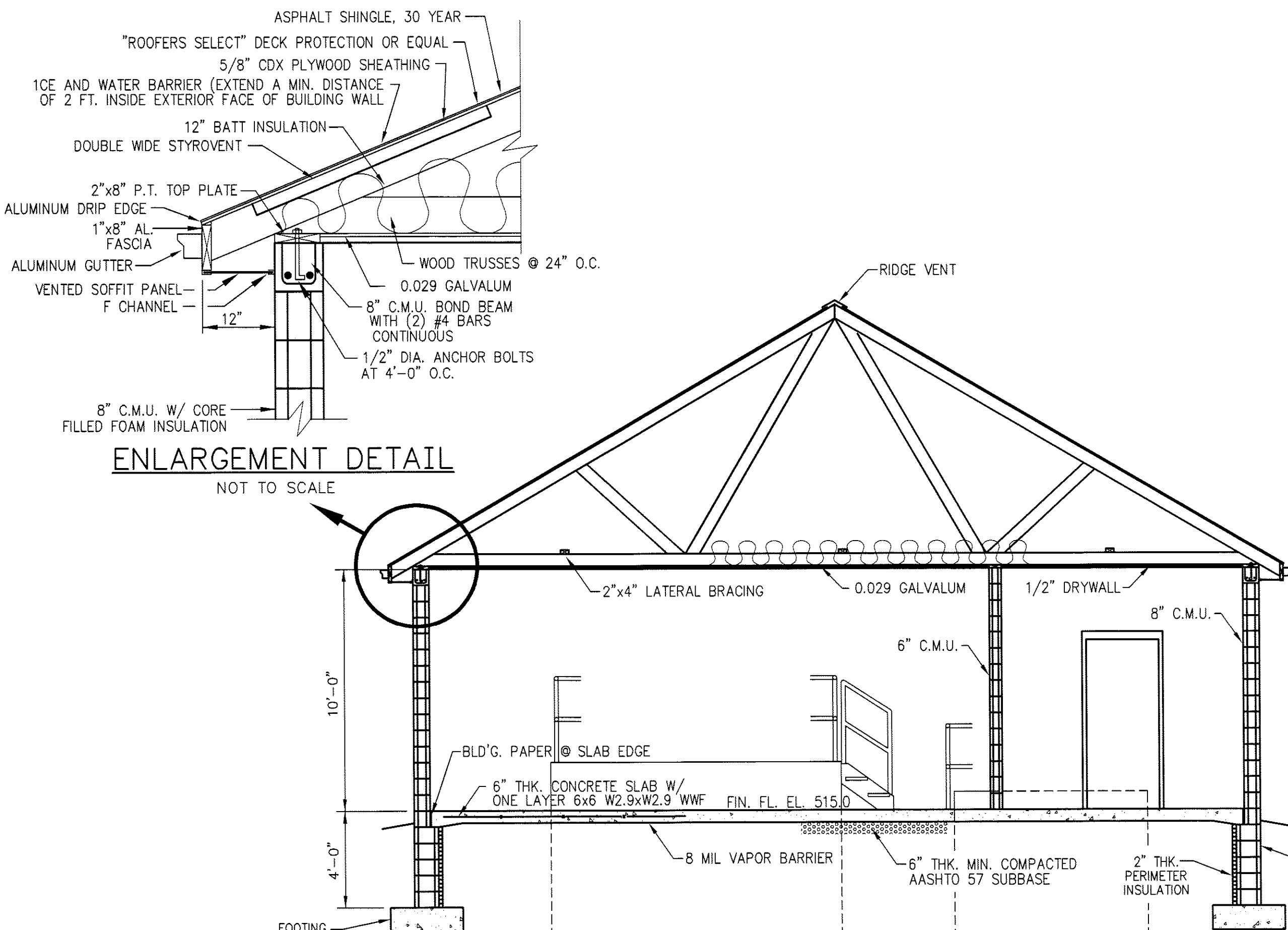
KEY: TOILET ROOM ACCESSORIES (TYPE 18-8 S.S. WITH #4 SATIN FINISH)

- ① SURFACE MOUNTED 12"x18" MIRROR
- ② SURFACE MOUNTED PAPER TOWEL DISPENSER
- ③ SURFACE MOUNTED TOILET PAPER DISPENSER

NOTES:

1. HOUSEKEEPING PADS FOR ODOR CONTROL UNIT AND GENERATOR TO BE 4 INCH THICK CONCRETE WITH ONE LAYER 6X6 W2.1XW2.1 WWF.
2. CONSTRUCTION JOINTS IN CONCRETE TO BE KEYPED AND PROVIDED WITH 3/8"x6" PVC RIBBED CENTER BULB WATER STOP.
3. CONCRETE MASONRY UNITS SHALL BE ASTM C90 GRADE N.
4. MASONRY WALLS SHALL HAVE GALVANIZED HORIZONTAL REINFORCEMENT AT ALTERNATE COURSES.
5. VERTICAL MASONRY WALL REINFORCING SHALL BE #6@48" O.C. FILL CORES WITH GROUT OR CONCRETE.
6. MASONRY FOUNDATION WALLS SHALL BE PARGED WITH 3/8" MORTAR COATING. PARGED SURFACE SHALL BE BITUMINOUS COATED BELOW GRADE.

7. PROVIDE (2) 5-LB. UL-LISTED MULTIPURPOSE DRY CHEMICAL TYPE FIRE EXTINGUISHERS, 3-A:40-B:C, WITH SIGNAGE IN LOCATIONS SHOWN.
8. WOOD ROOF TRUSS SYSTEM SHALL BE DESIGNED FOR 40 PSF SNOW LOAD, 15 PSF TOP CHORD DEAD LOAD, 10 PSF BOTTOM CHORD DEAD LOAD. DESIGN SHALL BE CERTIFIED BY NYS LICENSED PROFESSIONAL ENGINEER.
9. PROVIDE HURRICANE-TYPE TIE DOWN CONNECTOR PLATES FOR FASTENING TRUSSES TO TOP PLATE.
10. HANDRAIL AND POSTS TO BE SCH. 40, 1 1/2" DIA. STEEL PIPE, ASTM A53, GRADE B, PAINTED SAFETY YELLOW. CONSTRUCT TO COMPLY OSHA STD. 29 CFR 1910 AS TO DIMENSIONS AND LOAD CAPACITY.



BUILDING CROSS SECTION A-A
SCALE: 1/4" = 1'-0"

HARDWARE SCHEDULE - DOORS
DOORS TO BE KEYPED ALIKE. PROVIDE 5 SETS OF KEYS.

HARDWARE SET 1

EA. TO HAVE	ITEM	DESCRIPTION	FINISH/BASE MATERIAL	MANUFACTURER	COMMENTS
6	HINGE	FBK179NRP 4.5 X 4.5	600 PRIMED FOR PAINTING (STEEL)	STANLEY	NON-REMOVABLE PIN
1	SURFACE VERTICAL ROD EXIT DEVICE	2227L X 230L 3'-6" (LHR) 7'-0" DOOR	SP28 SPRAYED ALUMINUM	VON DUPRIN	
1	MORTISE CYLINDER HOUSING (1-1/4")	C16CR-27 X 001 6 PIN	626 BRUSHED CHROME (BRASS/BRONZE)	ARROW	
1	INTERCHANGEABLE CORE	C6S 6 PIN	626 BRUSHED CHROME (BRASS/BRONZE)	ARROW	
1	CLOSER	1461 RW/PA TBSRT	689 ALUMINUM PAINTED	LCN	PARALLEL ARM MOUNT
1	SURFACE BOLT	SB454	626 BRUSHED CHROME (BRASS/BRONZE)	IVES	
1	THRESHOLD	350 (6'-0")	ALUMINUM	NGP	
1	MEETING STILE STRAGAL	115NA (7'-0")	ALUMINUM	NGP	
2	DOOR BOTTOM	198NA (3'-0")	ALUMINUM	NGP	
1	PERIMETER SEAL	155V (6'-0" X 7'-0")	ALUMINUM	NGP	

HARDWARE SET 2

EA. TO HAVE	ITEM	DESCRIPTION	FINISH/BASE MATERIAL	MANUFACTURER	COMMENTS
3	HINGE	FBK179NRP 4.5 X 4.5	600 PRIMED FOR PAINTING (STEEL)	STANLEY	NON-REMOVABLE PIN
1	RIM EXIT DEVICE	22L X 230L (RHR)	SP28 SPRAYED ALUMINUM	VON DUPRIN	LHR
1	MORTISE CYLINDER HOUSING (1-1/4")	C16CR-27 X 001 6 PIN	626 BRUSHED CHROME (BRASS/BRONZE)	ARROW	
1	INTERCHANGEABLE CORE	C6S 6 PIN	626 BRUSHED CHROME (BRASS/BRONZE)	ARROW	
1	CLOSER	4041 RW/PA TBSRT	689 ALUMINUM PAINTED	LCN	PARALLEL ARM MOUNT
1	THRESHOLD	350 (3'-0")	ALUMINUM	NGP	
2	DOOR BOTTOM	198NA (3'-0")	ALUMINUM	NGP	
1	PERIMETER SEAL	155V (3'-0" X 7'-0")	ALUMINUM	NGP	

HARDWARE SET 3

EA. TO HAVE	ITEM	DESCRIPTION	FINISH/BASE MATERIAL	MANUFACTURER	COMMENTS
3	HINGE	FBK179 4.5 X 4.5	652 BRUSHED CHROME (STEEL)	STANLEY	
1	PASSAGE SET	Q01 SR	626 BRUSHED CHROME (BRASS/BRONZE)	ARROW	
3	SILENCER	SR64	626 BRUSHED CHROME (BRASS/BRONZE)	IVES	

HARDWARE SET 4

EA. TO HAVE	ITEM	DESCRIPTION	FINISH/BASE MATERIAL	MANUFACTURER	COMMENTS
3	HINGE	FBK179 4.5 X 4.5	652 BRUSHED CHROME (STEEL)	STANLEY	
1	PRIVACY SET	Q02 SR	626 BRUSHED CHROME (BRASS/BRONZE)	ARROW	
3	SILENCER	SR64	626 BRUSHED CHROME (BRASS/BRONZE)	IVES	

FINISH/BASE MATERIAL

FINISH/BASE MATERIAL	MANUFACTURER	COMMENTS
600 PRIMED FOR PAINTING (STEEL)	STANLEY	NON-REMOVABLE PIN
SP28 SPRAYED ALUMINUM	VON DUPRIN	
626 BRUSHED CHROME (BRASS/BRONZE)	ARROW	
626 BRUSHED CHROME (BRASS/BRONZE)	ARROW	
689 ALUMINUM PAINTED	LCN	PARALLEL ARM MOUNT
626 BRUSHED CHROME (BRASS/BRONZE)	IVES	
ALUMINUM	NGP	
ALUMINUM	NGP	
ALUMINUM	NGP	

FINISH/BASE MATERIAL

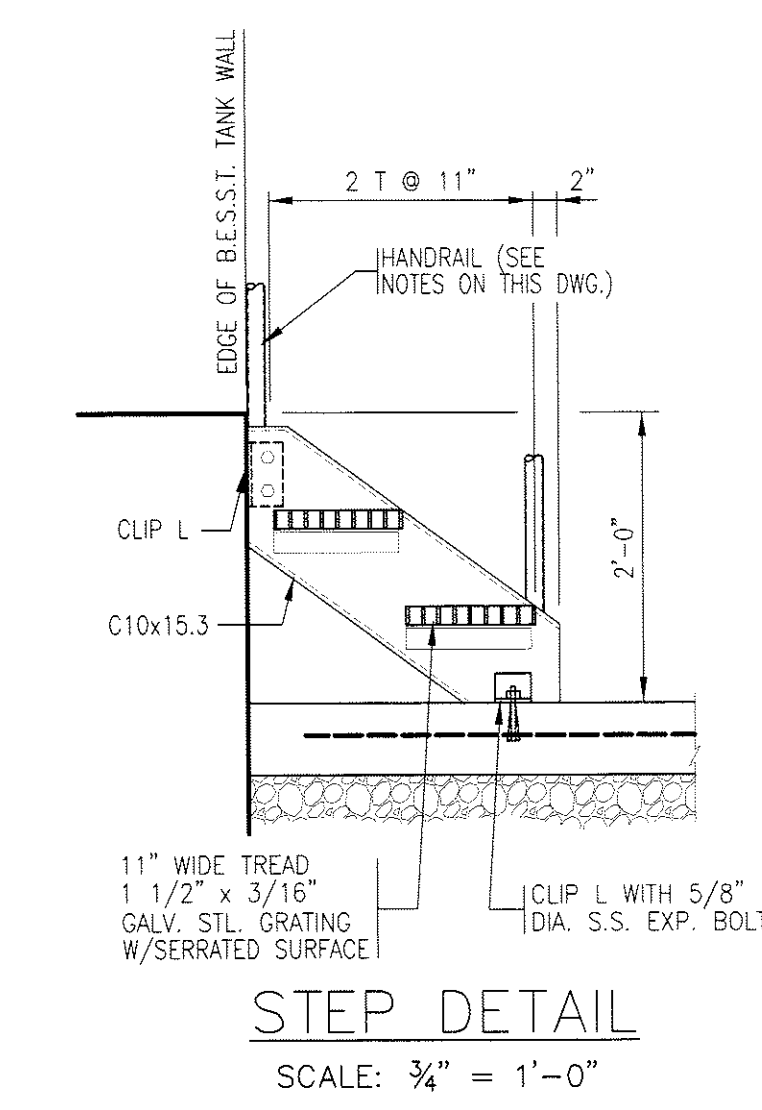
FINISH/BASE MATERIAL	MANUFACTURER	COMMENTS
600 PRIMED FOR PAINTING (STEEL)	STANLEY	NON-REMOVABLE PIN
SP28 SPRAYED ALUMINUM	VON DUPRIN	LHR
626 BRUSHED CHROME (BRASS/BRONZE)	ARROW	
626 BRUSHED CHROME (BRASS/BRONZE)	ARROW	
689 ALUMINUM PAINTED	LCN	PARALLEL ARM MOUNT
ALUMINUM	NGP	
ALUMINUM	NGP	
ALUMINUM	NGP	

FINISH/BASE MATERIAL

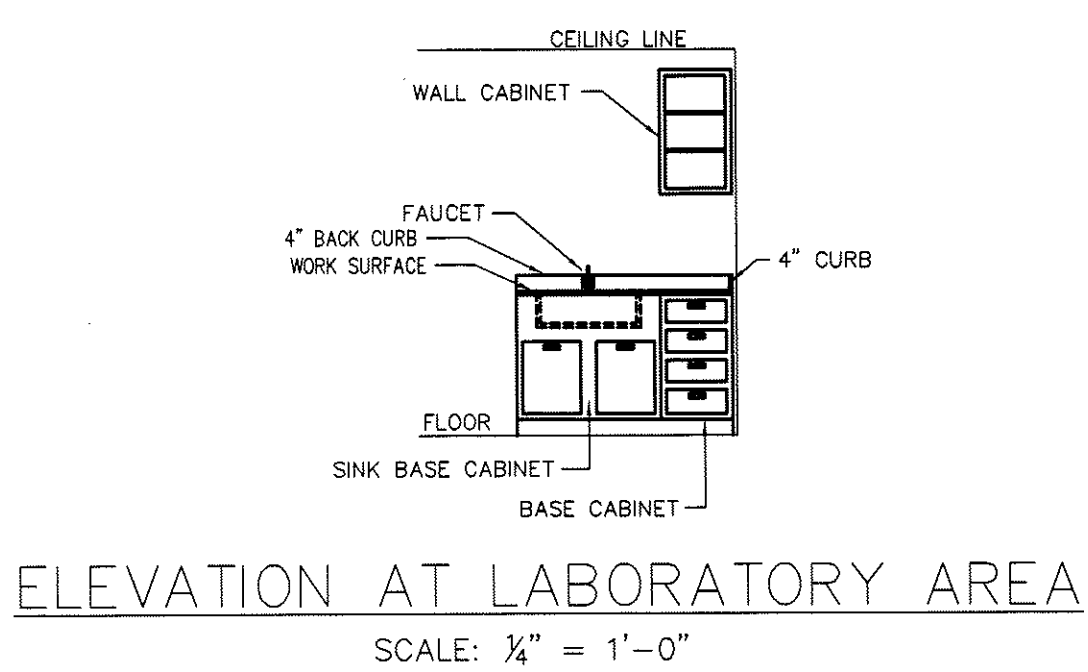
FINISH/BASE MATERIAL	MANUFACTURER	COMMENTS
652 BRUSHED CHROME (STEEL)	STANLEY	
626 BRUSHED CHROME (BRASS/BRONZE)	ARROW	
626 BRUSHED CHROME (BRASS/BRONZE)	IVES	

FINISH/BASE MATERIAL

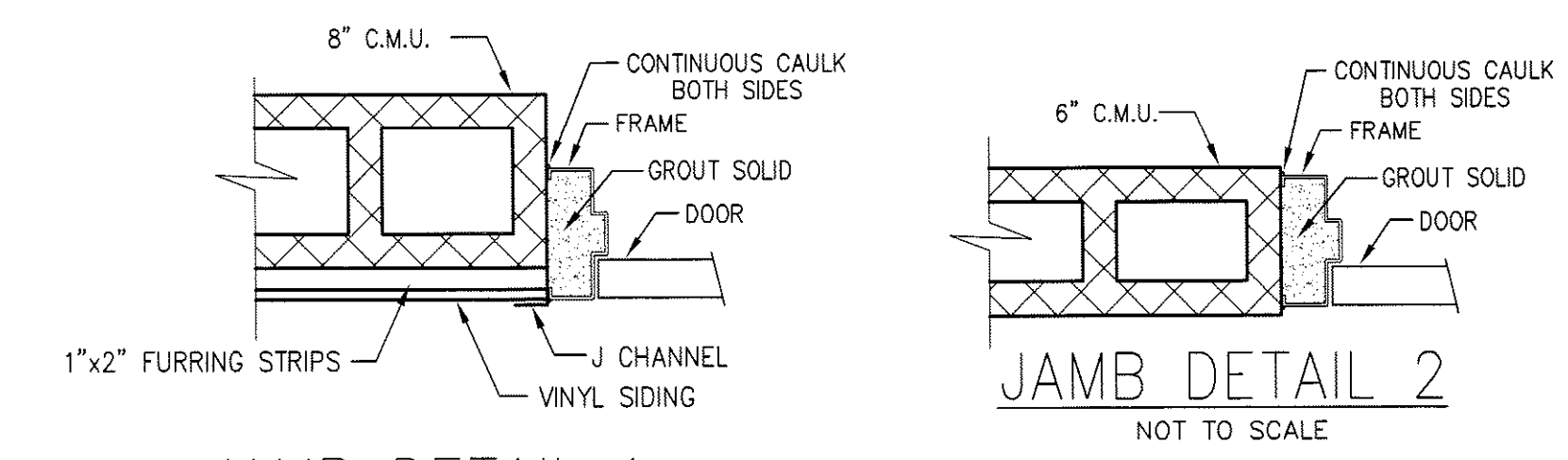
FINISH/BASE MATERIAL	MANUFACTURER	COMMENTS
652 BRUSHED CHROME (STEEL)	STANLEY	
626 BRUSHED CHROME (BRASS/BRONZE)	ARROW	
626 BRUSHED CHROME (BRASS/BRONZE)	IVES	



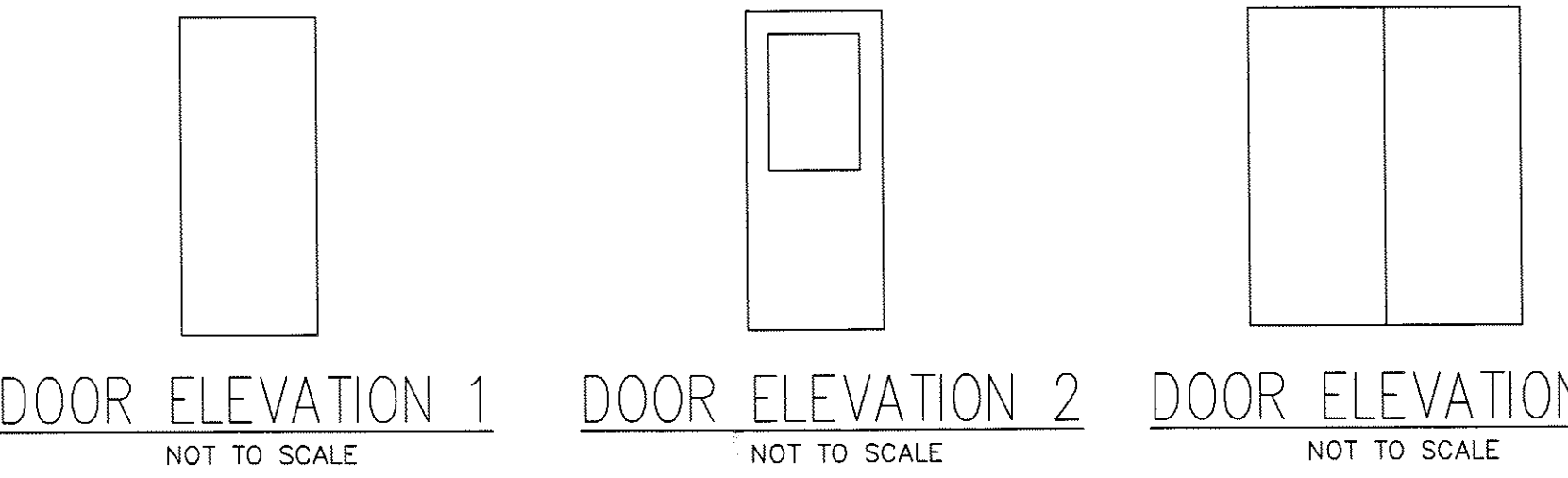
STEP DETAIL
SCALE: 3/4" = 1'-0"



ELEVATION AT LABORATORY AREA
SCALE: 1/4" = 1'-0"



JAMB DETAIL 1 NOT TO SCALE
JAMB DETAIL 2 NOT TO SCALE



DOOR ELEVATION 1 NOT TO SCALE
DOOR ELEVATION 2 NOT TO SCALE
DOOR ELEVATION 3 NOT TO SCALE

ROOM FINISH SCHEDULE

NO.	ROOM	FLOOR	BASE	WALLS	MATERIAL	CEILING		SEE NOTE
						HEIGHT	TYPE	
100	Process	Concrete	None	Block Painted	GALVALUM	10'-0"	1	
101	Office	Concrete	None	Block Painted	1/2" M.R. DRYWALL	10'-0"		
102	Lavatory	Concrete	None	Block Painted	1/2" M.R. DRYWALL	10'-0"		

NOTES:
1. 0.029 GALVALUM CORRUGATED METAL PANEL WITH PAINTED WHITE FINISH. INSTALL WITH FACTORY SUPPLIED CLIPS AT WALLS.

DOOR SCHEDULE

DOOR No.	SIZE			DOOR DESCRIPTION	MATERIAL	FINISH	ELEVATION	FRAME			THRESHOLD MATERIAL	HARDWARE SET	REMARKS
	WIDTH	HEIGHT	THICK					MATERIAL	FINISH	JAMB DETAIL			
D1	6'-0"	7'-0"	1 3/4"	18 GAUGE FLUSH H.M. INSULATED, .40 GALVANIZED	P	3	16 GAUGE H.M. WELDED, .40 GALVANIZED, STANDARD FRAME	P	1	AL	1	4" HEAD, DOUBLE DOOR *	
D2	3'-0"	7'-0"	1 3/4"	18 GAUGE FLUSH H.M. INSULATED, .40 GALVANIZED	P	1	16 GAUGE H.M. WELDED, .40 GALVANIZED, STANDARD FRAME	P	1	AL	2	4" HEAD, RIGHT HAND REVERSE *	
D3	3'-0"	7'-0"	1 3/4"	18 GAUGE FLUSH H.M. INSULATED, .40 GALVANIZED	P	2	16 GAUGE H.M. WELDED, .40 GALVANIZED, STANDARD FRAME	P	2	N/A	3	4" HEAD, RIGHT HAND REVERSE *	
D4	2'-8"	7'-0"	1 3/4"	18 GAUGE FLUSH H.M. INSULATED, .40 GALVANIZED	P	1	16 GAUGE H.M. WELDED, .40 GALVANIZED, STANDARD FRAME	P	2	N/A	4	4" HEAD, LEFT HAND REVERSE *	
D5	3'-0"	7'-0"	1 3/4"	18 GAUGE FLUSH H.M. INSULATED, .40 GALVANIZED	P	1	16 GAUGE H.M. WELDED, .40 GALVANIZED, STANDARD FRAME	P	1	AL	2	4" HEAD, RIGHT HAND REVERSE *	

* CLOSER REINFORCED DOOR SYSTEM WITH PANIC HARDWARE

NOTE:
PER NEW YORK STATE LAW, CHANGES TO THE DESIGN DRAWINGS MAY ONLY BE MADE BY THE LICENSED PROFESSIONAL DESIGN ENGINEER. UNAUTHORIZED ALTERATION OR ADDITION IS A VIOLATION OF SECTION 7209(2) OF THE NEW YORK STATE EDUCATION LAW.

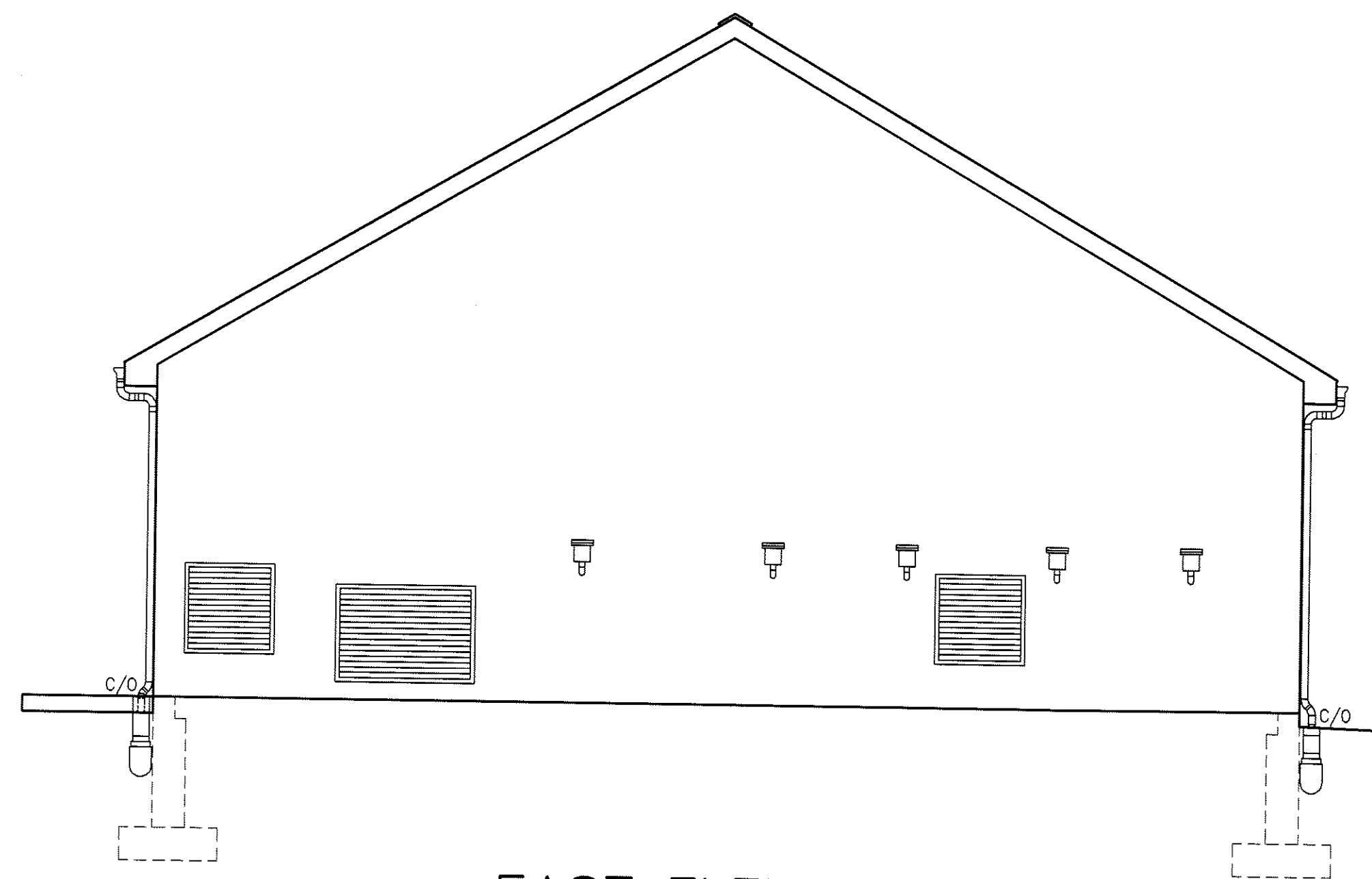


MILNES ENGINEERING INC.
 PLANNING • DESIGNING • ENGINEERING • SURVEYING • CONSTRUCTION SERVICES
 TUNKHANNOCK, PA. 18657
 (570) 836-2145

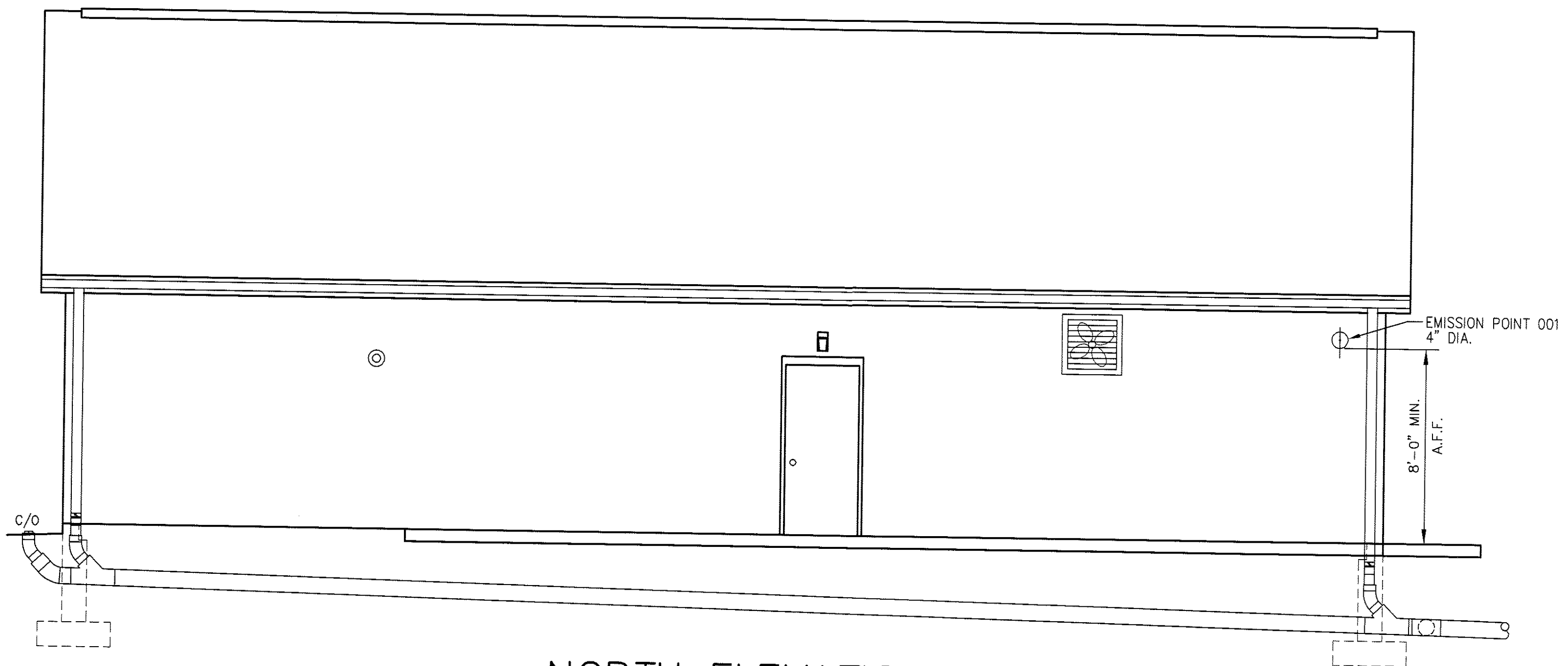
ARCHITECTURAL PLAN AND SECTIONS
WASTEWATER TREATMENT PLANT
 BRIDLESIDE
 TOWN OF NORTH SALEM,
 WESTCHESTER COUNTY,
 NEW YORK

NO.	DATE	BY	APPD.

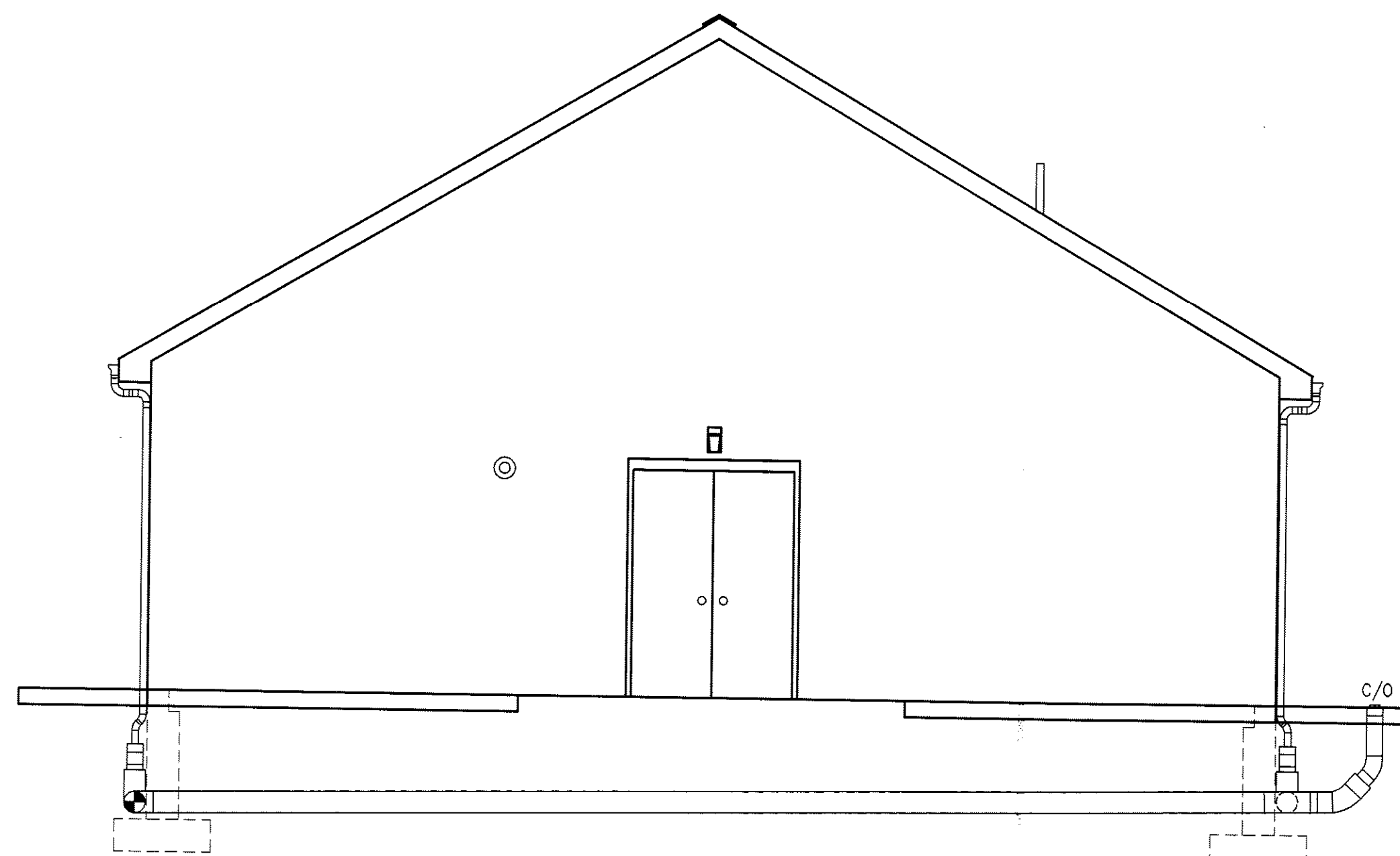
DRAWN: WJG DATE: 02/15/12
 APPD: DATE:
 SCALE: 1/4" = 1'-0"
 PROJECT: E2904
 FILE: BRIDLESIDE\ARCH
 DRAWING NO.: A-1 REV.: 0



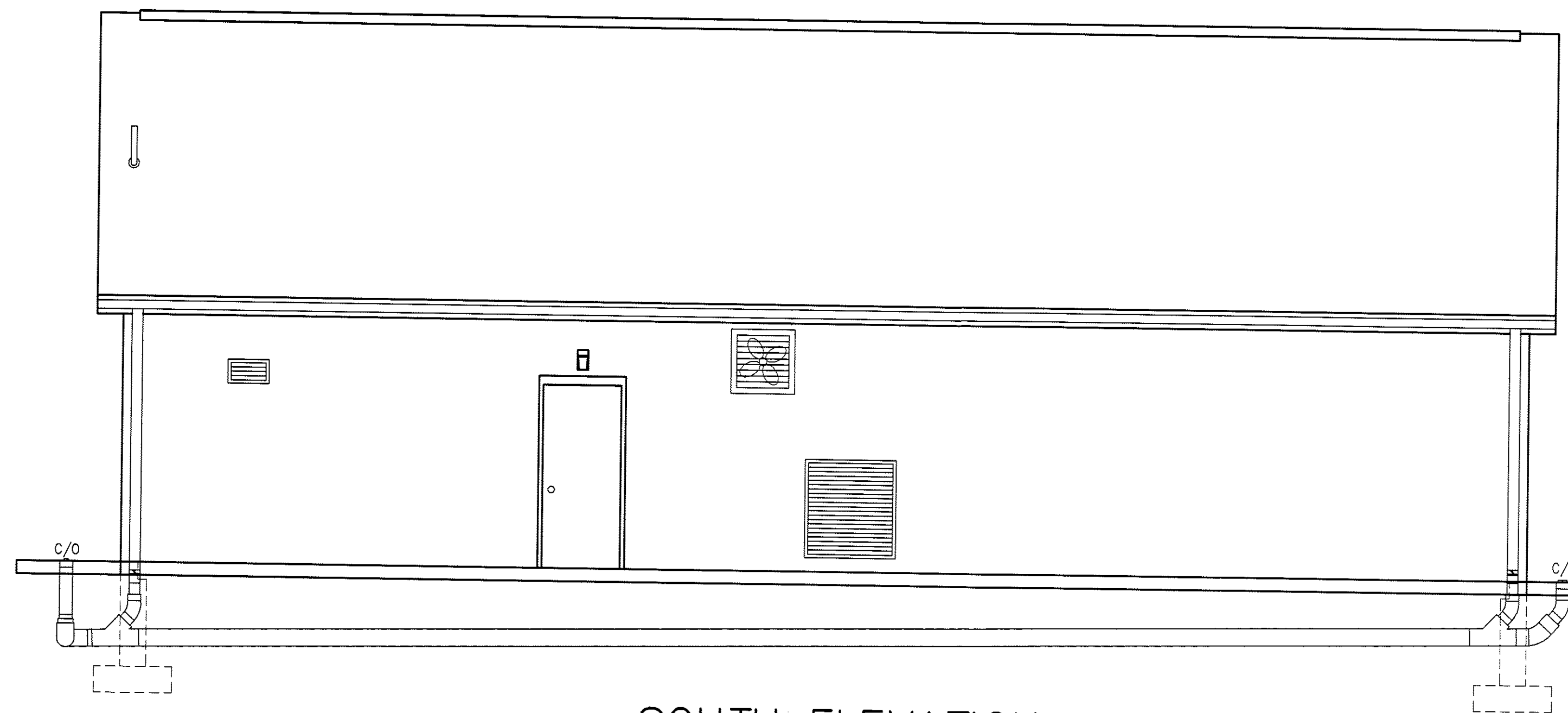
EAST ELEVATION
SCALE: 1/4" = 1'-0"



NORTH ELEVATION
SCALE: 1/4" = 1'-0"



WEST ELEVATION
SCALE: 1/4" = 1'-0"



SOUTH ELEVATION
SCALE: 1/4" = 1'-0"

NOTE:
PER NEW YORK STATE LAW, CHANGES TO THE DESIGN DRAWINGS MAY ONLY BE MADE BY THE LICENSED PROFESSIONAL DESIGN ENGINEER. UNAUTHORIZED ALTERATION OR ADDITION IS A VIOLATION OF SECTION 7209(2) OF THE NEW YORK STATE EDUCATION LAW.



REV.	DESCRIPTION	BY	DATE	APPD.

ARCHITECTURAL ELEVATIONS
WASTEWATER TREATMENT PLANT
BRIDLESIDE
TOWN OF NORTH SALEM,
WESTCHESTER COUNTY,
NEW YORK

MILNES ENGINEERING INC.
PLANNING • DESIGNING • ENGINEERING
SURVEYING • CONSTRUCTION SERVICES
12 FEAR HILL ROAD
TUN KHANNOCK, PA 18657
(570) 836-2145

DRAWN: WJG	DATE: 02/15/12
APPD:	DATE:
SCALE: 1/4" = 1'-0"	
PROJECT: E2904	
FILE: BRIDLESIDE\ARCH	
DRAWING NO.: A-2	REV.: 0