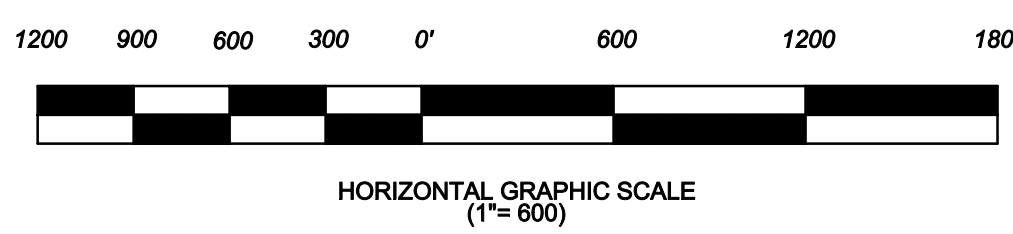
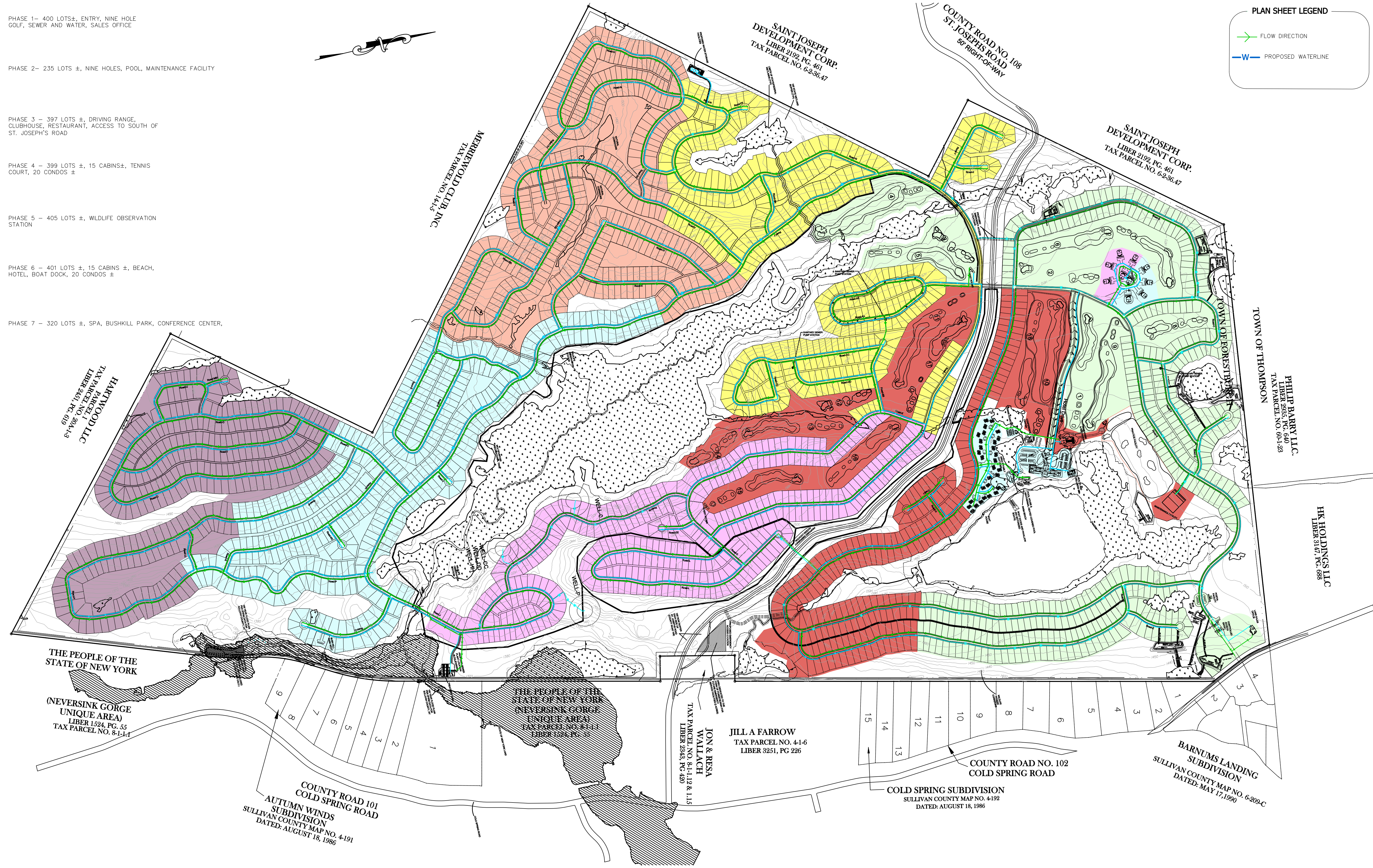
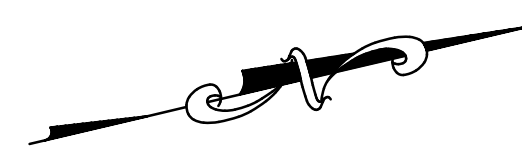
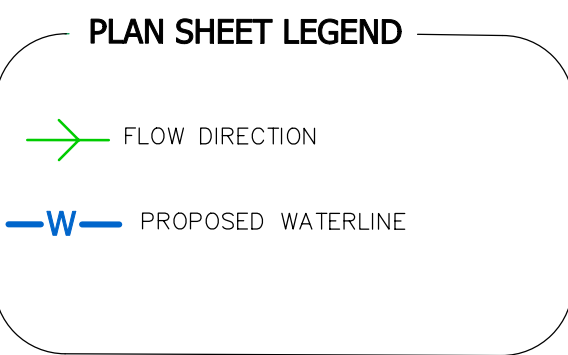


- PHASE 1- 400 LOTS±, ENTRY, NINE HOLE GOLF, SEWER AND WATER, SALES OFFICE
- PHASE 2- 235 LOTS ±, NINE HOLES, POOL, MAINTENANCE FACILITY
- PHASE 3 - 397 LOTS ±, DRIVING RANGE, CLUBHOUSE, RESTAURANT, ACCESS TO SOUTH OF ST. JOSEPH'S ROAD
- PHASE 4 - 399 LOTS ±, 15 CABINS±, TENNIS COURT, 20 CONDOS ±
- PHASE 5 - 405 LOTS ±, WILDLIFE OBSERVATION STATION
- PHASE 6 - 401 LOTS ±, 15 CABINS ±, BEACH, HOTEL, BOAT DOCK, 20 CONDOS ±
- PHASE 7 - 320 LOTS ±, SPA, BUSHKILL PARK, CONFERENCE CENTER,



Rev	Date	By	Chk'd	Description
1	1/7/2010	JMD	DPC	REVISIONS PER 11/2/09 CT MALE REVIEW

Copyright 2009, of alfred benesch and company. All rights reserved. This plan and design content is the property of alfred benesch and company. Use, reuse, reproduction or modification of this plan or design information, or any part thereof, is strictly prohibited, except by written permission of this firm.

benesch
alfred benesch & company
Engineers • Surveyors • Planners
400 One Norwegian Plaza
P.O. Box 1090
Pottsville, Pennsylvania 17901
570-622-4055

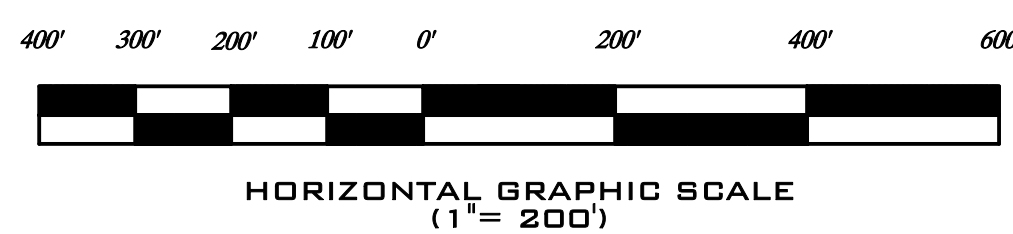
BRINKASH ASSOCIATES, INC.
SURVEYING & ENGINEERING
1715 CENTRE STREET ASHLAND, PA 17921
(570) 675-1016 (PHONE) (570) 675-1670 (FAX)

**CONCEPTUAL DESIGN PLANS
UTILITY PLAN-PHASING
LOST LAKE RESORT**
TOWN OF FORESTBURGH, SULLIVAN COUNTY, NEW YORK



MATCH SHEET 3

MATCH SHEET 4



Rev	Date	By	Chk'd	Description
1	1/7/2010	JMD	DPC	REVISIONS PER 11/2/09 CT MALE REVIEW

Copyright 2009, of alfred benesch and company. All rights reserved. This plan and design content is the property of alfred benesch and company. Use, reuse, reproduction or modification of this plan or design information, or any part thereof, is strictly prohibited, except by written permission of this firm.

Drawn: RMD Designed: _____ Checked: _____

benesch
alfred benesch & company
Engineers • Surveyors • Planners
400 One Nonnegian Plaza
P. O. Box 1090
Pottsville, Pennsylvania 17901
610-622-4055

BRINKASH
ASSOCIATES, INC.
SURVEYING & ENGINEERING
1715 CENTRE STREET ASHLAND, PA 17921
(610)-875-1016 (PHONE) (610)-875-1670 (FAX)

CONCEPTUAL DESIGN PLANS
UTILITY PLAN-1
LOST LAKE RESORT
TOWN OF FORESTBURGH, SULLIVAN COUNTY, NEW YORK

Scale: AS NOTED Date: 08 / 13 / 2009 Project No.: 30107.01 Sheet No.: 2 OF 12



MATCH SHEET 2

MATCH SHEET 5

400' 300' 200' 100' 0' 200' 400' 600'



HORIZONTAL GRAPHIC SCALE
(1" = 200')

Rev	Date	By	Chk'd	Description
1	1/7/2010	JMD	DPC	REVISIONS PER 11/2/09 CT MALE REVIEW

Copyright 2009, of Alfred Benesch and Company. All rights reserved. This plan and design content is the property of Alfred Benesch and Company. Use, reuse, reproduction or modification of this plan or design information, or any part thereof, is strictly prohibited, except by written permission of this firm.

benesch
alfred benesch & company
Engineers • Surveyors • Planners
400 One Nonnegian Plaza
P. O. Box 1090
Pottsville, Pennsylvania 17901
610-622-4055

BRINKASH
ASSOCIATES, INC.
SURVEYING & ENGINEERING
1715 CENTRE STREET ASHLAND, PA 17921
(610)-875-1016 (PHONE) (610)-875-1670 (FAX)

CONCEPTUAL DESIGN PLANS
UTILITY PLAN-2
LOST LAKE RESORT
TOWN OF FORESTBURGH, SULLIVAN COUNTY, NEW YORK

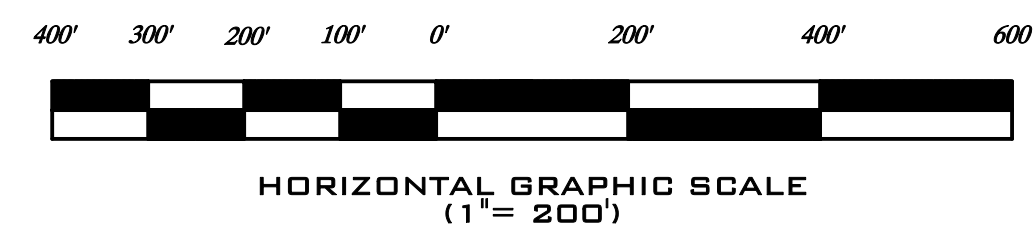
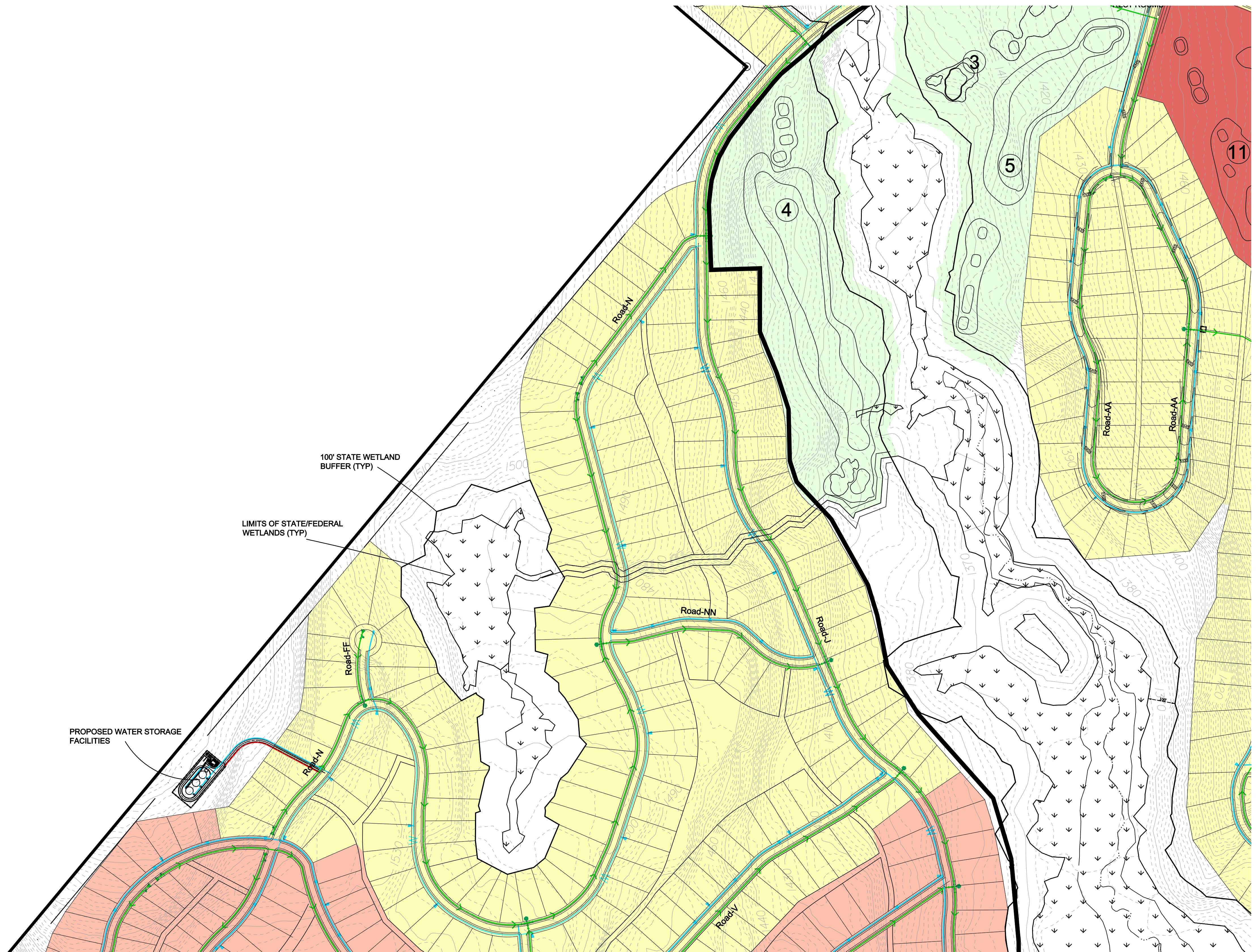
Drawn: RMD Designed: Checked:

Scale: AS NOTED

Date: 08 / 13 / 2009

Project No.: 30107.01

Sheet No.: 3 OF 12



Rev	Date	By	Chk'd	Description
1	1/7/2010	JMD	DPC	REVISIONS PER 11/2/09 CT MALE REVIEW

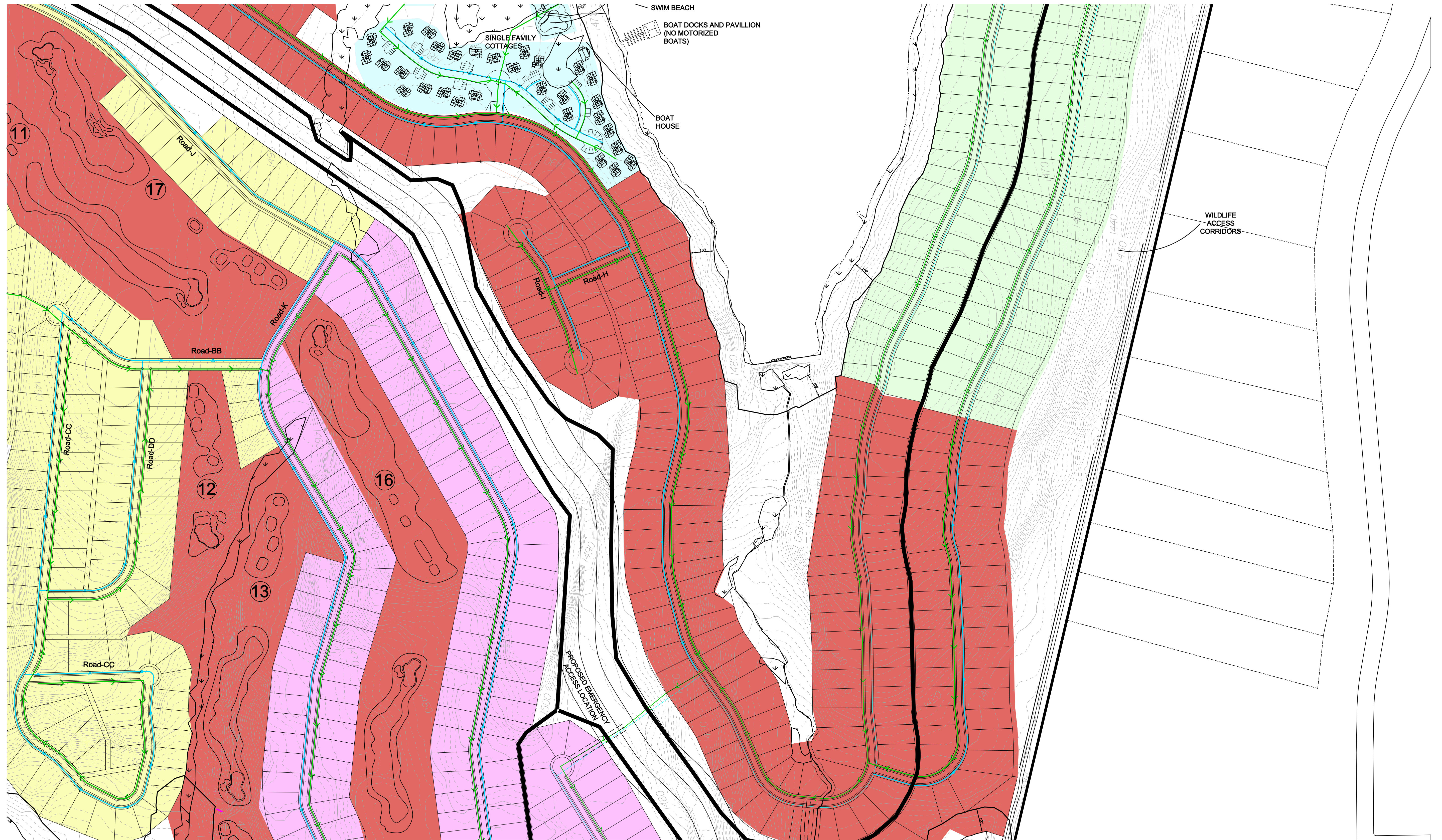
Copyright 2009, of alfred benesch and company. All rights reserved. This plan and design content is the property of alfred benesch and company. Use, reuse, reproduction or modification of this plan or design information, or any part thereof, is strictly prohibited, except by written permission of this firm.

benesch
alfred benesch & company
Engineers • Surveyors • Planners
400 One Nonnegian Plaza
P.O. Box 1090
Pottsville, Pennsylvania 17901
570-622-4055

BRINKASH ASSOCIATES, INC.
SURVEYING & ENGINEERING
1715 CENTRE STREET ASHLAND, PA 17921
(570)-875-1016 (PHONE) (570)875-1670 (FAX)

CONCEPTUAL DESIGN PLANS
UTILITY PLAN-3
LOST LAKE RESORT
TOWN OF FORESTBURGH, SULLIVAN COUNTY, NEW YORK

MATCH SHEET 3



MATCH SHEET 4

MATCH SHEET 7-



HORIZONTAL GRAPHIC SCALE
(1" = 200')

Rev	Date	By	Chk'd	Description
1	1/7/2010	JMD	DPC	REVISIONS PER 11/2/09 CT MALE REVIEW

Copyright 2009, of alfred benesch and company. All rights reserved. This plan and design content is the property of alfred benesch and company. Use, reuse, reproduction or modification of this plan or design information, or any part thereof, is strictly prohibited, except by written permission of this firm.

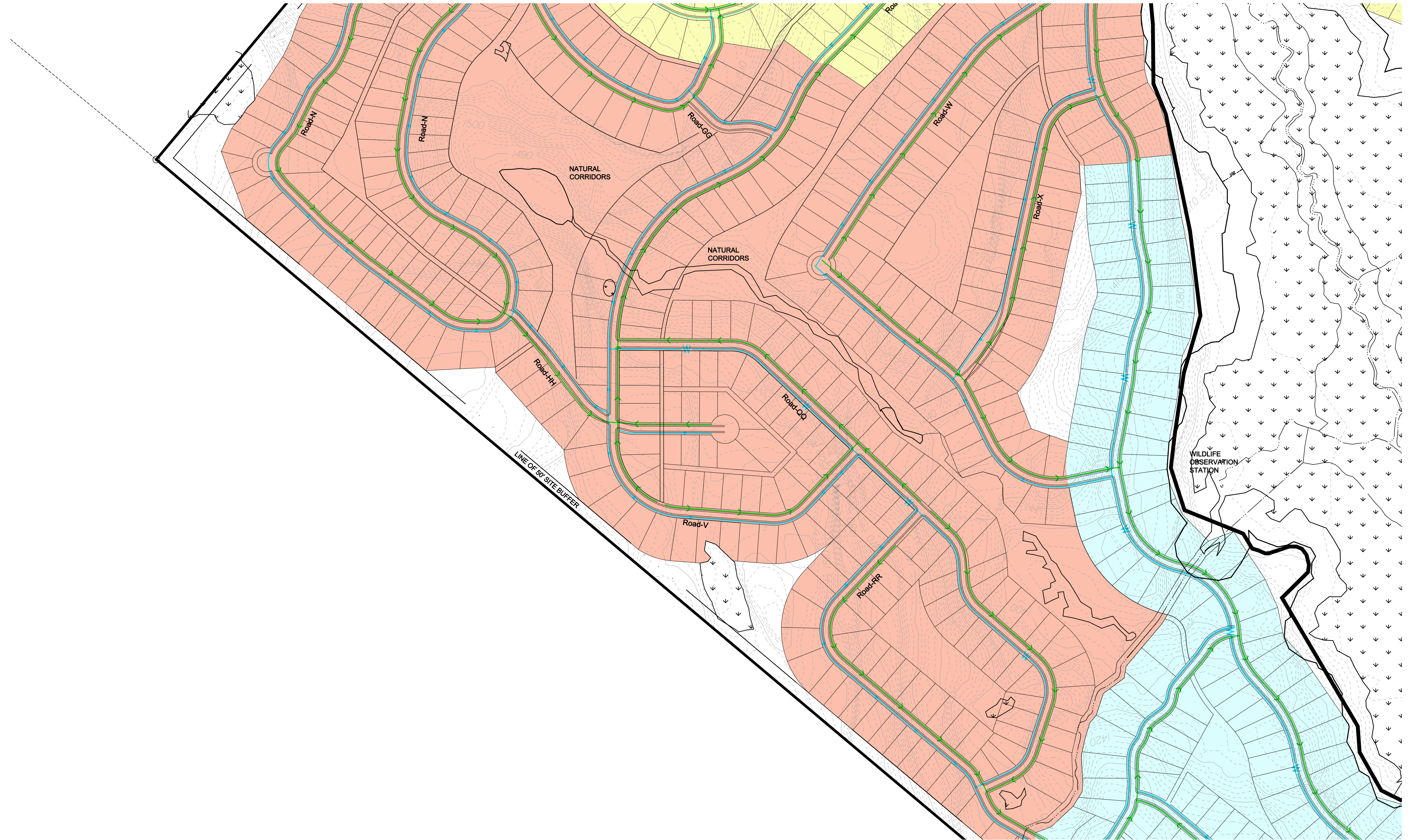
benesch
alfred benesch & company
Engineers • Surveyors • Planners
400 One Norwegian Plaza
P.O. Box 1090
Pottsville, Pennsylvania 17901
570-622-4055

BRINKASH
ASSOCIATES, INC.
SURVEYING & ENGINEERING
1715 CENTRE STREET ASHLAND, PA 17921
(570)-875-1016 (PHONE) (570)875-1670 (FAX)

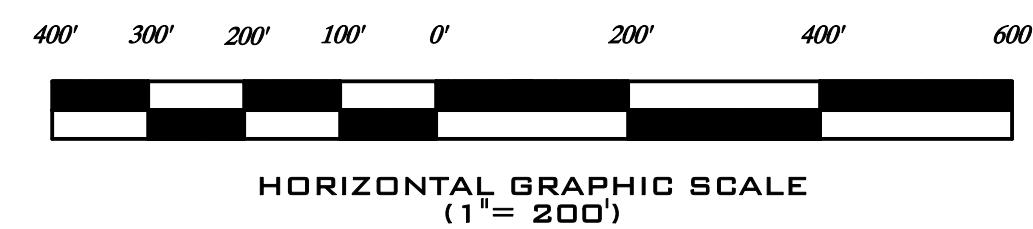
CONCEPTUAL DESIGN PLANS
UTILITY PLAN-4
LOST LAKE RESORT
TOWN OF FORESTBURGH, SULLIVAN COUNTY, NEW YORK

Drawn: RMD Designed: _____ Checked: _____

Scale: AS NOTED Date: 08 / 13 / 2009 Project No.: 30107.01 Sheet No.: 5 OF 12



MATCH SHEET 7



Rev	Date	By	Chk'd	Description
1	1/7/2010	JMD	DPC	REVISIONS PER 11/2/09 CT MALE REVIEW

Copyright 2009, of alfred benesch and company. All rights reserved. This plan and design content is the property of alfred benesch and company. Use, reuse, reproduction or modification of this plan or design information, or any part thereof, is strictly prohibited, except by written permission of this firm.

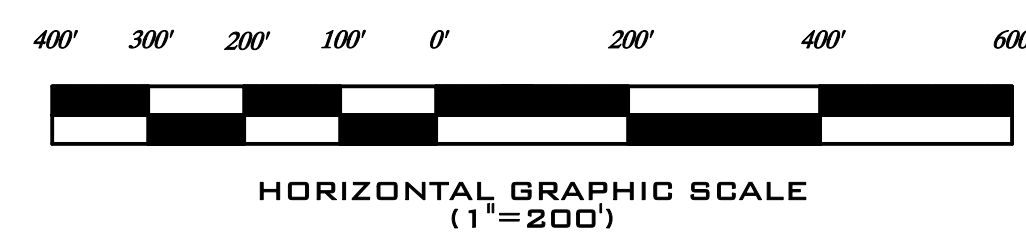
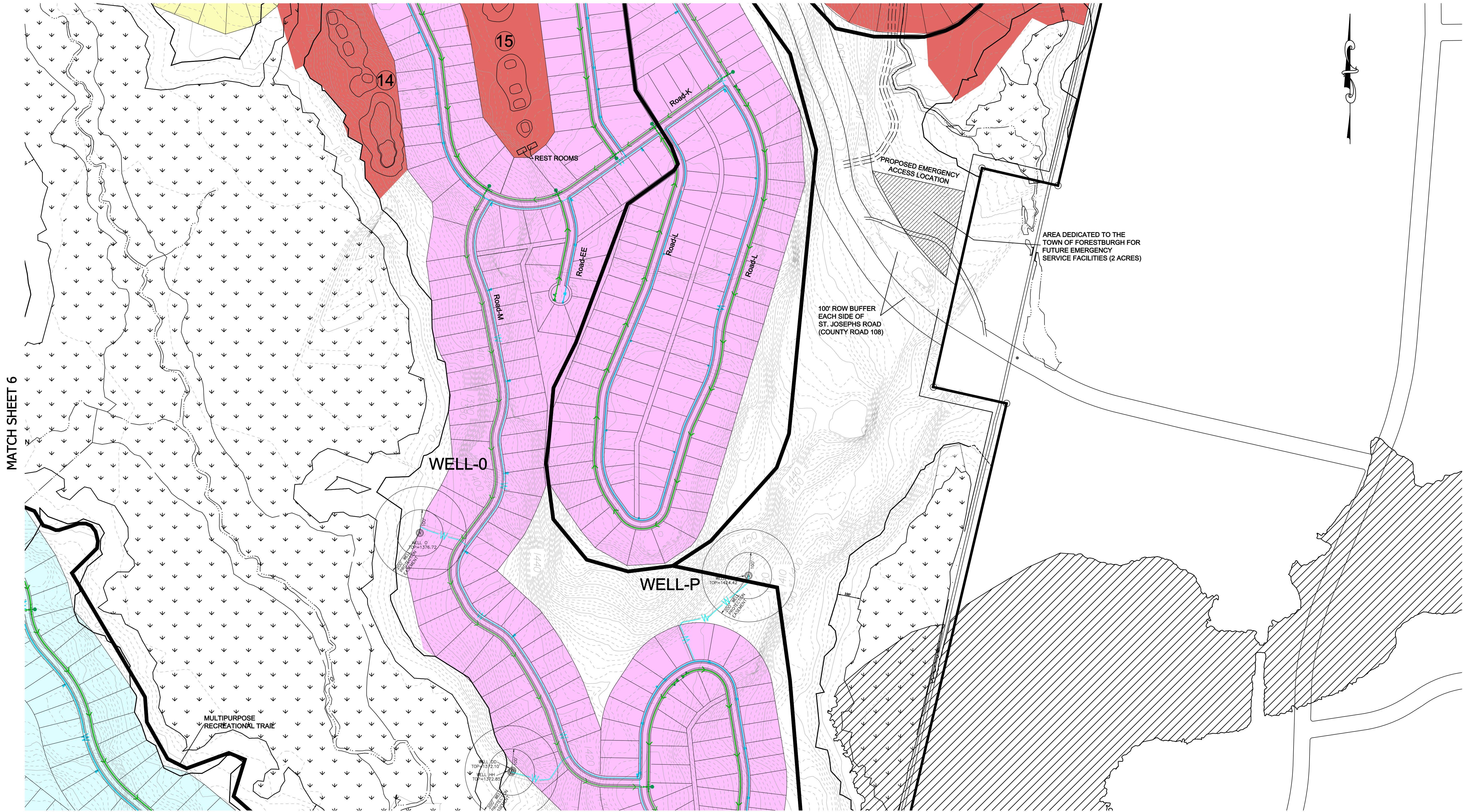
benesch
alfred benesch & company
Engineers • Surveyors • Planners
400 One Norwegian Plaza
P.O. Box 1090
Pottsville, Pennsylvania 17901
570-622-4055

BRINKASH
ASSOCIATES, INC.
SURVEYING & ENGINEERING
1715 CENTRE STREET ASHLAND, PA 17921
(570)-875-1016 (PHONE) (570)-875-1670 (FAX)

CONCEPTUAL DESIGN PLANS
UTILITY PLAN-5
LOST LAKE RESORT
TOWN OF FORESTBURGH, SULLIVAN COUNTY, NEW YORK

Drawn: RMD Designed: _____ Checked: _____

Scale: AS NOTED Date: 08 / 13 / 2009 Project No.: 30107.01 Sheet No.: 6 OF 12



Rev	Date	By	Chk'd	Description
1	1/7/2010	JMD	DPC	REVISIONS PER 11/2/09 CT MALE REVIEW

Copyright 2009, of alfred benesch and company. All rights reserved. This plan and design content is the property of alfred benesch and company. Use, reuse, reproduction or modification of this plan or design information, or any part thereof, is strictly prohibited, except by written permission of this firm.

Drawn: RMD Designed: _____ Checked: _____

benesch
alfred benesch & company
Engineers • Surveyors • Planners
400 One Norwegian Plaza
P. O. Box 1090
Pottsville, Pennsylvania 17901
570-622-4055

BRINKASH
ASSOCIATES, INC.
SURVEYING & ENGINEERING
1718 CENTRE STREET ASHLAND, PA 17921
(570)-875-1016 (PHONE) (570)875-1670 (FAX)

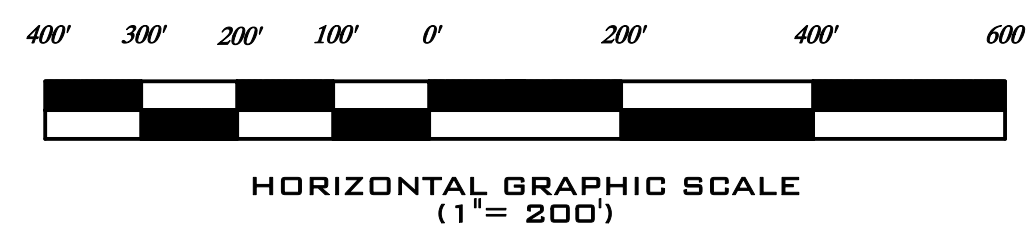
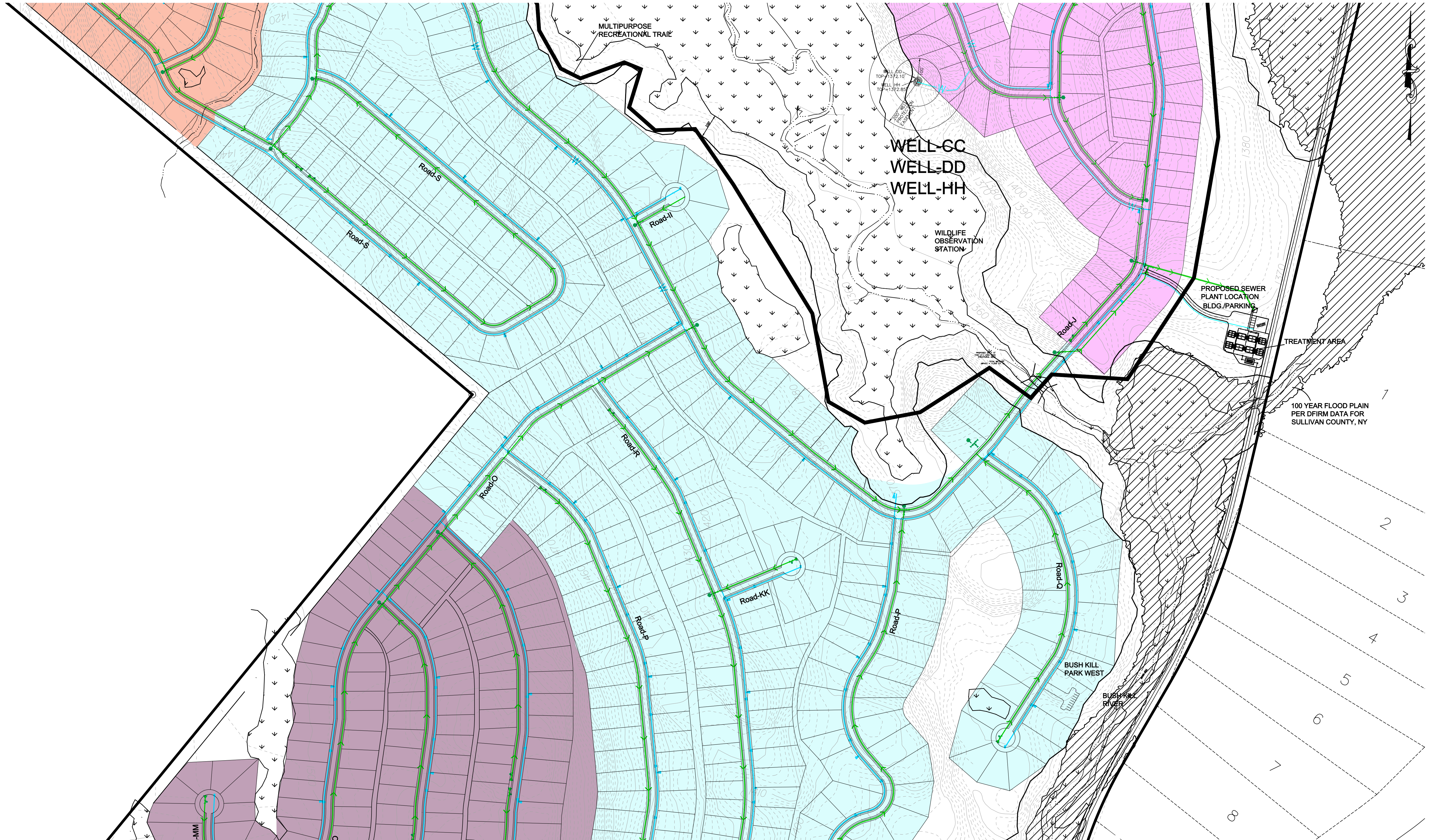
CONCEPTUAL DESIGN PLANS
UTILITY PLAN-6
LOST LAKE RESORT
TOWN OF FORESTBURGH, SULLIVAN COUNTY, NEW YORK

Scale: AS NOTED

Date: 08 / 13 / 2009

Project No.: 30107.01

Sheet No.: 7 OF 12



Rev	Date	By	Chk'd	Description
1	1/7/2010	JMD	DPC	REVISIONS PER 11/2/09 CT MALE REVIEW

Copyright 2009, of alfred benesch and company. All rights reserved. This plan and design content is the property of alfred benesch and company. Use, reuse, reproduction or modification of this plan or design information, or any part thereof, is strictly prohibited, except by written permission of this firm.

benesch
alfred benesch & company
Engineers • Surveyors • Planners
400 One Norwegian Plaza
P.O. Box 1090
Pottsville, Pennsylvania 17901
570-622-4055

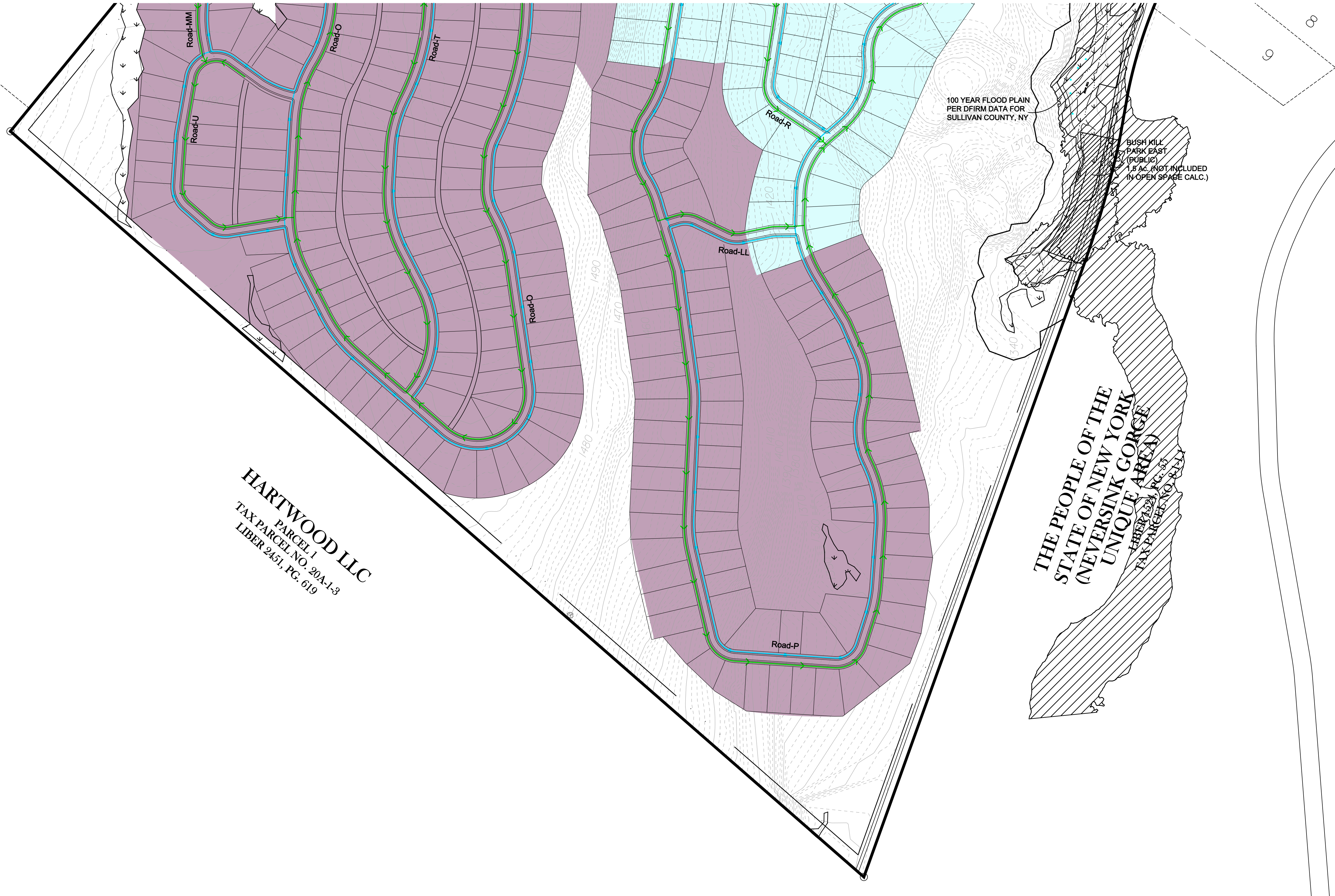
BRINKASH
ASSOCIATES, INC.
SURVEYING & ENGINEERING
1715 CENTRE STREET ASHLAND, PA 17921
(570)-875-1016 (PHONE) (570)875-1670 (FAX)

CONCEPTUAL DESIGN PLANS
UTILITY PLAN-7
LOST LAKE RESORT
TOWN OF FORESTBURGH, SULLIVAN COUNTY, NEW YORK

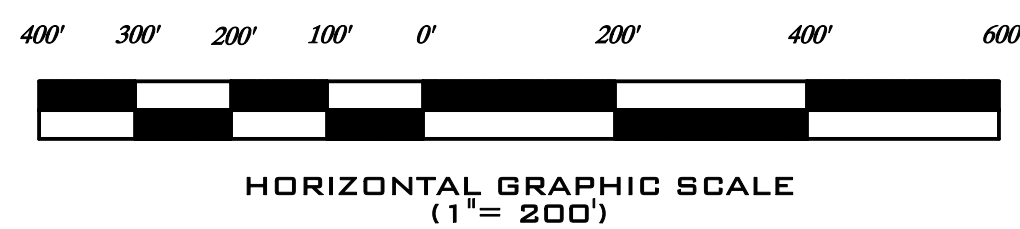
Drawn: RMD Designed: _____ Checked: _____

Scale: AS NOTED Date: 08 / 13 / 2009 Project No.: 30107.01 Sheet No.: 8 OF 12

MATCH SHEET 8



HARTWOOD LLC
PARCEL 1
TAX PARCEL NO. 20A-1-3
LIBER 2451, PG. 619



Rev	Date	By	Chk'd	Description
1	1/7/2010	JMD	DPC	REVISIONS PER 11/2/09 CT MALE REVIEW

Copyright 2009, of alfred benesch and company. All rights reserved. This plan and design content is the property of alfred benesch and company. Use, reuse, reproduction or modification of this plan or design information, or any part thereof, is strictly prohibited, except by written permission of this firm.

benesch
alfred benesch & company
Engineers • Surveyors • Planners
400 One Nonwegan Plaza
P.O. Box 1090
Pottsville, Pennsylvania 17901
570-622-4055

BRINKASH
ASSOCIATES, INC.
SURVEYING & ENGINEERING
1715 CENTRE STREET ASHLAND, PA 17921
(570)-875-1016 (PHONE) (570)875-1670 (FAX)

CONCEPTUAL DESIGN PLANS
UTILITY PLAN-8
LOST LAKE RESORT
TOWN OF FORESTBURGH, SULLIVAN COUNTY, NEW YORK

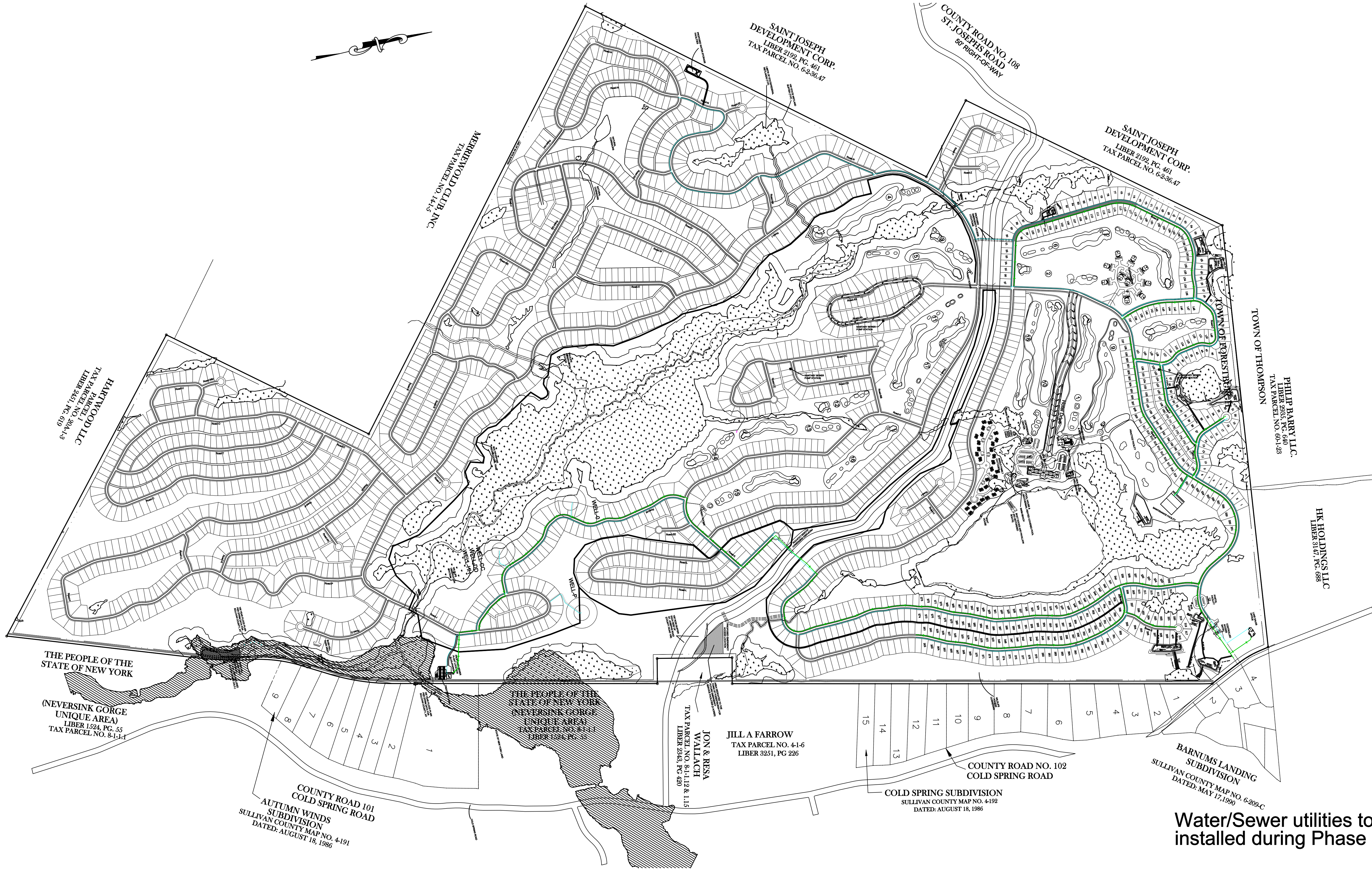
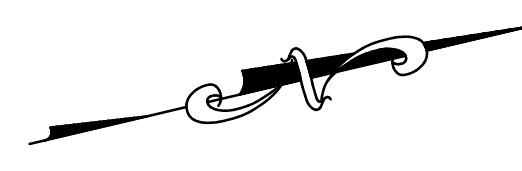
Drawn: RMD Designed: _____ Checked: _____

Scale: AS NOTED

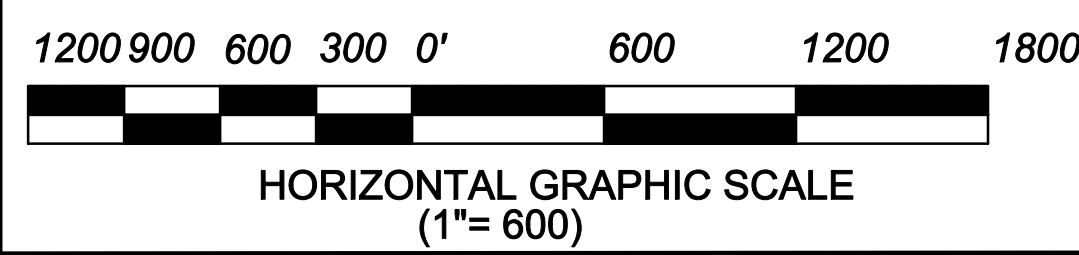
Date: 08 / 13 / 2009

Project No.: 30107.01

Sheet No.: 9 OF 12



Water/Sewer utilities to be installed during Phase I



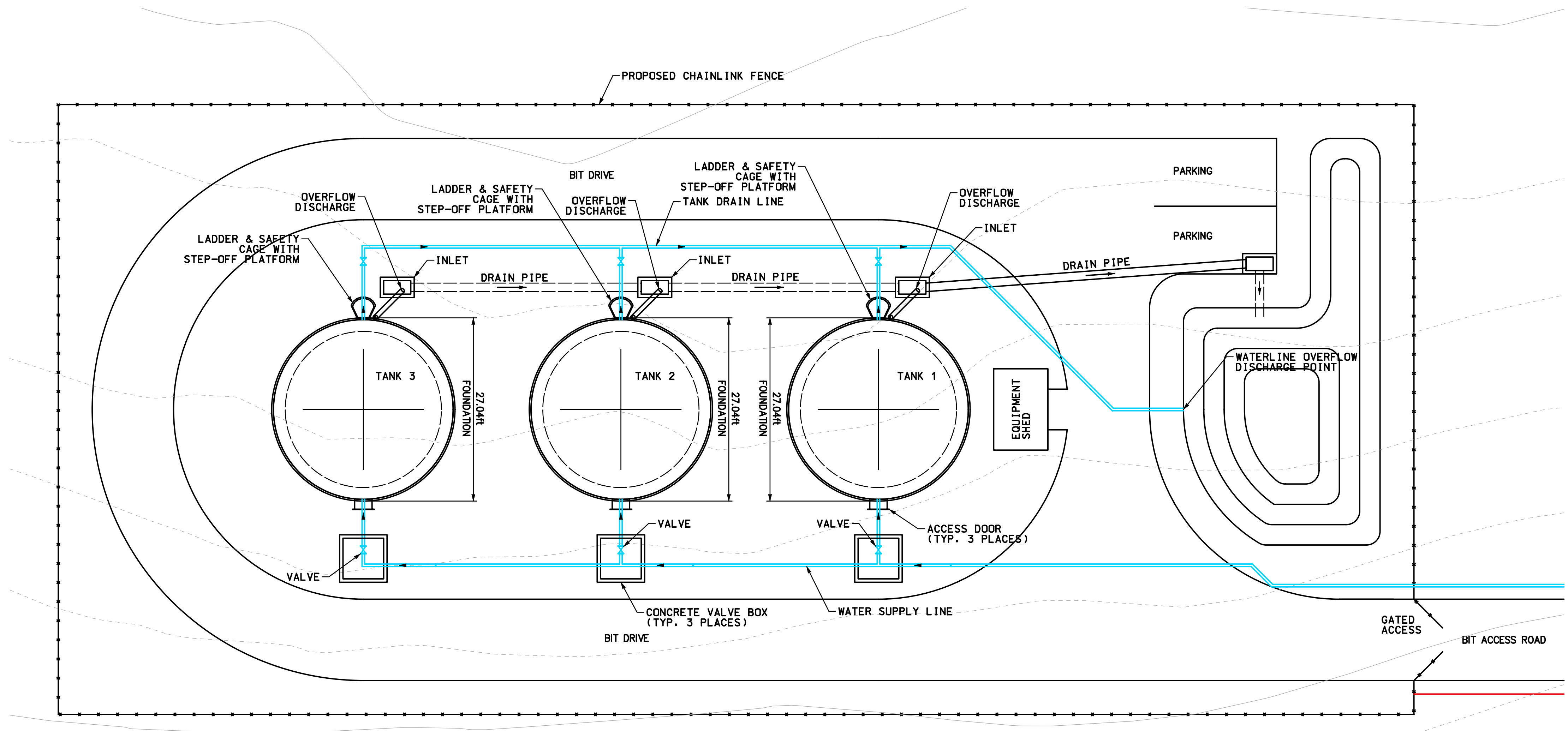
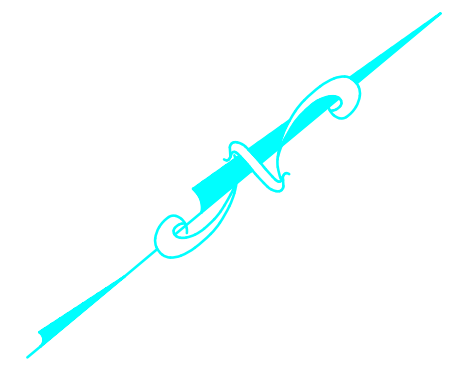
Rev	Date	By	Chk'd	Description
1	1/7/2010	JMD	DPC	REVISIONS PER 11/2/09 CT MALE REVIEW

Copyright 2009, of alfred benesch and company. All rights reserved. This plan and design content is the property of alfred benesch and company. Use, reuse, reproduction or modification of this plan or design information, or any part thereof, is strictly prohibited, except by written permission of this firm.

benesch
alfred benesch & company
Engineers • Surveyors • Planners
400 One Norwegian Plaza
P. O. Box 1090
Pottsville, Pennsylvania 17901
570-622-4055

BRINKASH
ASSOCIATES, INC.
SURVEYING & ENGINEERING
1718 CENTRE STREET ASHLAND, PA 17921
(570)-875-1016 (PHONE) (570)875-1670 (FAX)

CONCEPTUAL DESIGN PLANS
UTILITY PLAN-9
LOST LAKE RESORT
TOWN OF FORESTBURGH, SULLIVAN COUNTY, NEW YORK



SITE PLAN
SCALE: 1"=10'

Rev	Date	By	Chk'd	Description
1	1/7/2010	JMD	DPC	REVISIONS PER 11/2/09 CT MALE REVIEW

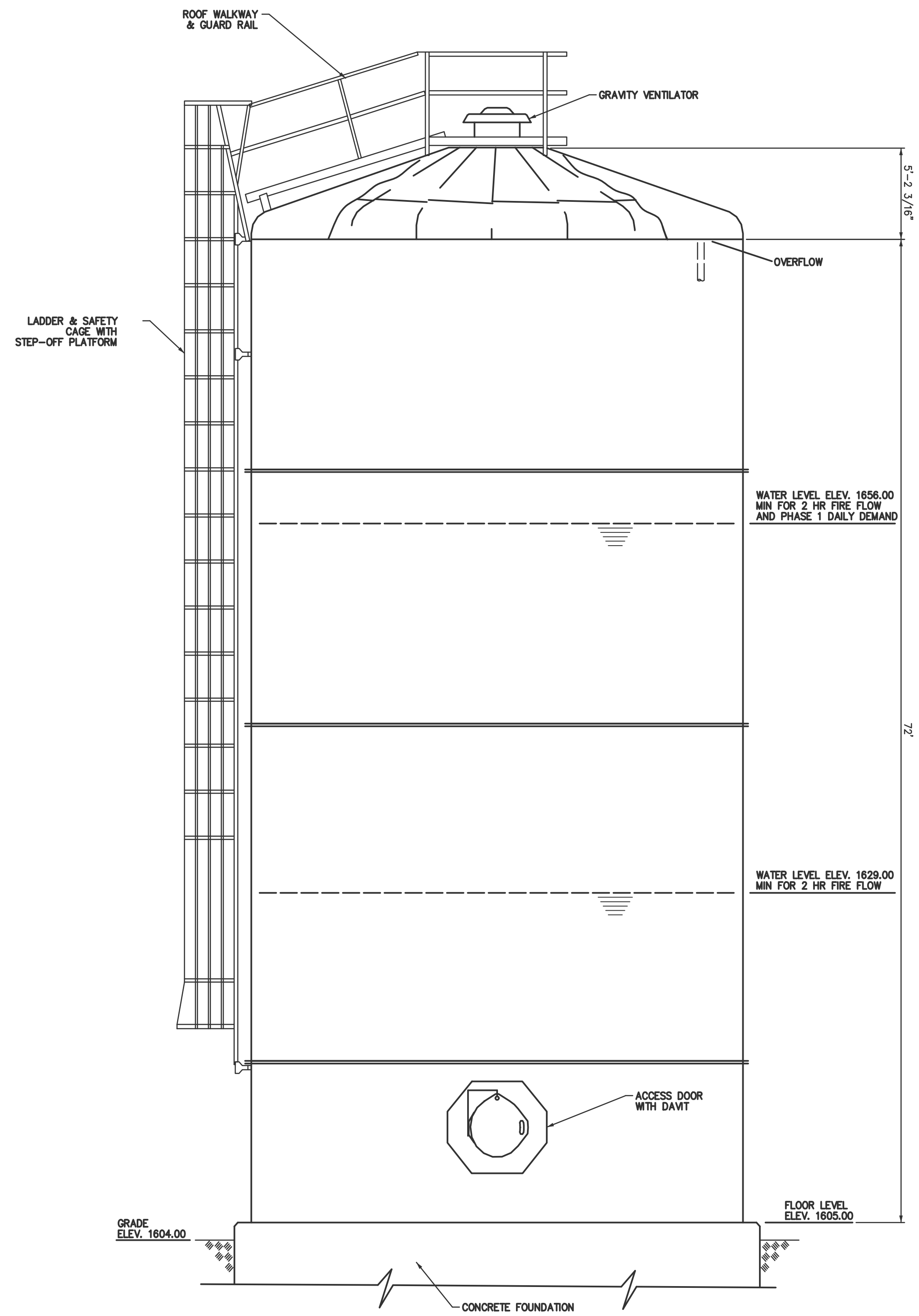
Copyright 2009, of alfred benesch and company. All rights reserved. This plan and design content is the property of alfred benesch and company. Use, reuse, reproduction or modification of this plan or design information, or any part thereof, is strictly prohibited, except by written permission of this firm.

benesch
alfred benesch & company
Engineers • Surveyors • Planners
400 One Norwegian Plaza
P.O. Box 1090
Pottsville, Pennsylvania 17901
570-622-4055

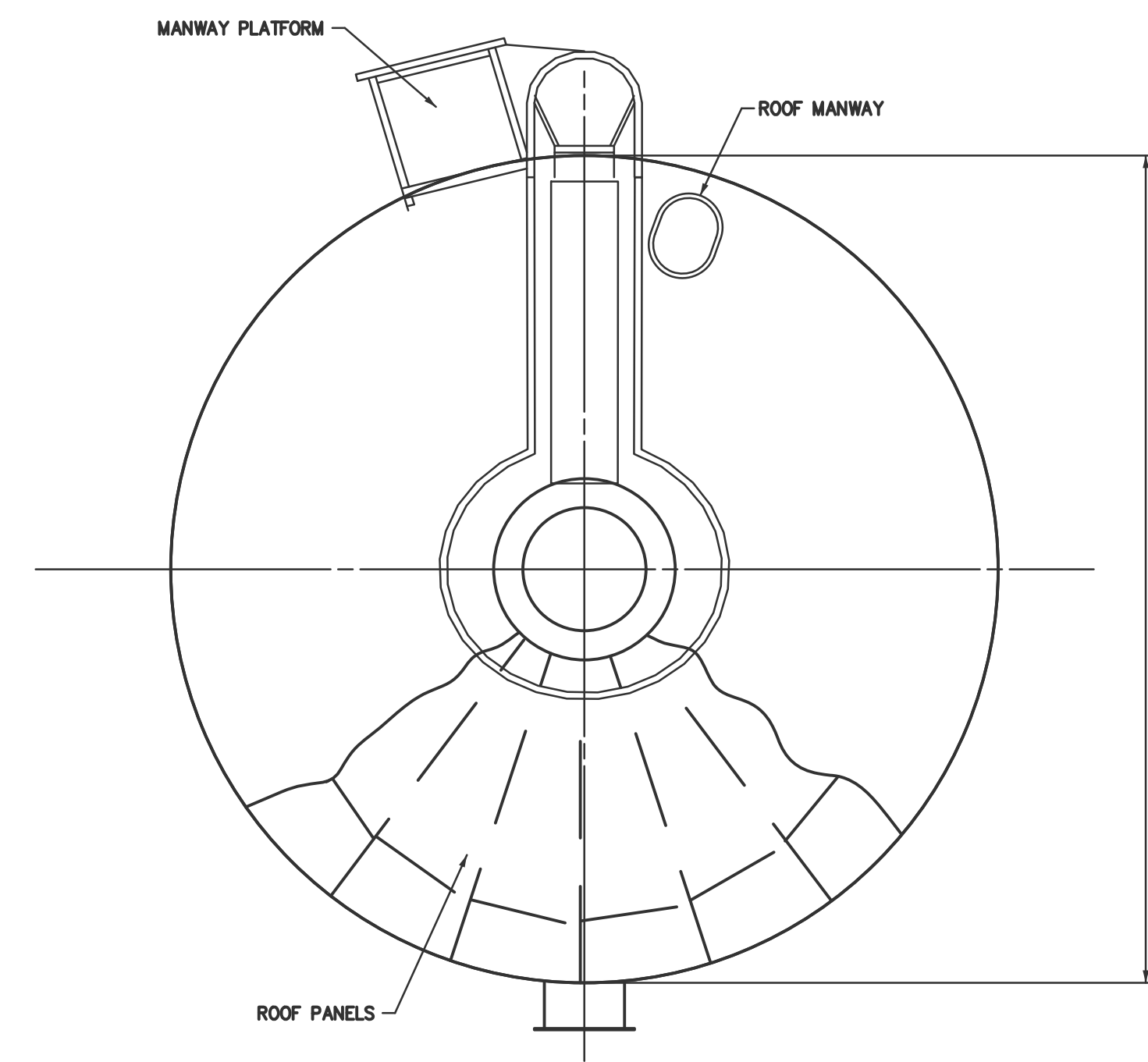
BRINKASH ASSOCIATES, INC.
SURVEYING & ENGINEERING
1715 CENTRE STREET ASHLAND, PA 17921
(570)-875-1016 (PHONE) (570)875-1670 (FAX)

CONCEPTUAL DESIGN PLANS
PROPOSED WATERTANK SITE PLAN
LOST LAKE RESORT
TOWN OF FORESTBURGH, SULLIVAN COUNTY, NEW YORK

Scale: AS NOTED Date: 08 / 13 / 2009 Project No.: 30107.01 Sheet No.: 11 OF 12



TANK ELEVATION
N.T.S.



TANK PLAN
N.T.S.

Rev	Date	By	Chk'd	Description
2	4/20/2010	WTO	MCM	REVISIONS TO HEIGHT AND DIAMETER
1	1/7/2010	JMD	DPC	REVISIONS PER 11/2/09 CT MALE REVIEW

Copyright 2009, of alfred benesch and company. All rights reserved. This plan and design content is the property of alfred benesch and company. Use, reuse, reproduction or modification of this plan or design information, or any part thereof, is strictly prohibited, except by written permission of this firm.

benesch
alfred benesch & company
Engineers • Surveyors • Planners
400 One Norwegian Plaza
P.O. Box 1090
Pottsville, Pennsylvania 17901
570-622-4055

BRINKASH ASSOCIATES, INC.
SURVEYING & ENGINEERING
1713 CENTRE STREET ASHLAND, PA 17921
(570)-875-1018 (PHONE) (570)875-1670 (FAX)

CONCEPTUAL DESIGN PLANS
PROPOSED WATERTANK DETAILS
LOST LAKE RESORT
TOWN OF FORESTBURGH, SULLIVAN COUNTY, NEW YORK

Drawn: RMD Designed: _____ Checked: _____

Scale: AS NOTED

Date: 08 / 13 / 2009

Project No.: 30107.01

Sheet No.: 12 OF 12