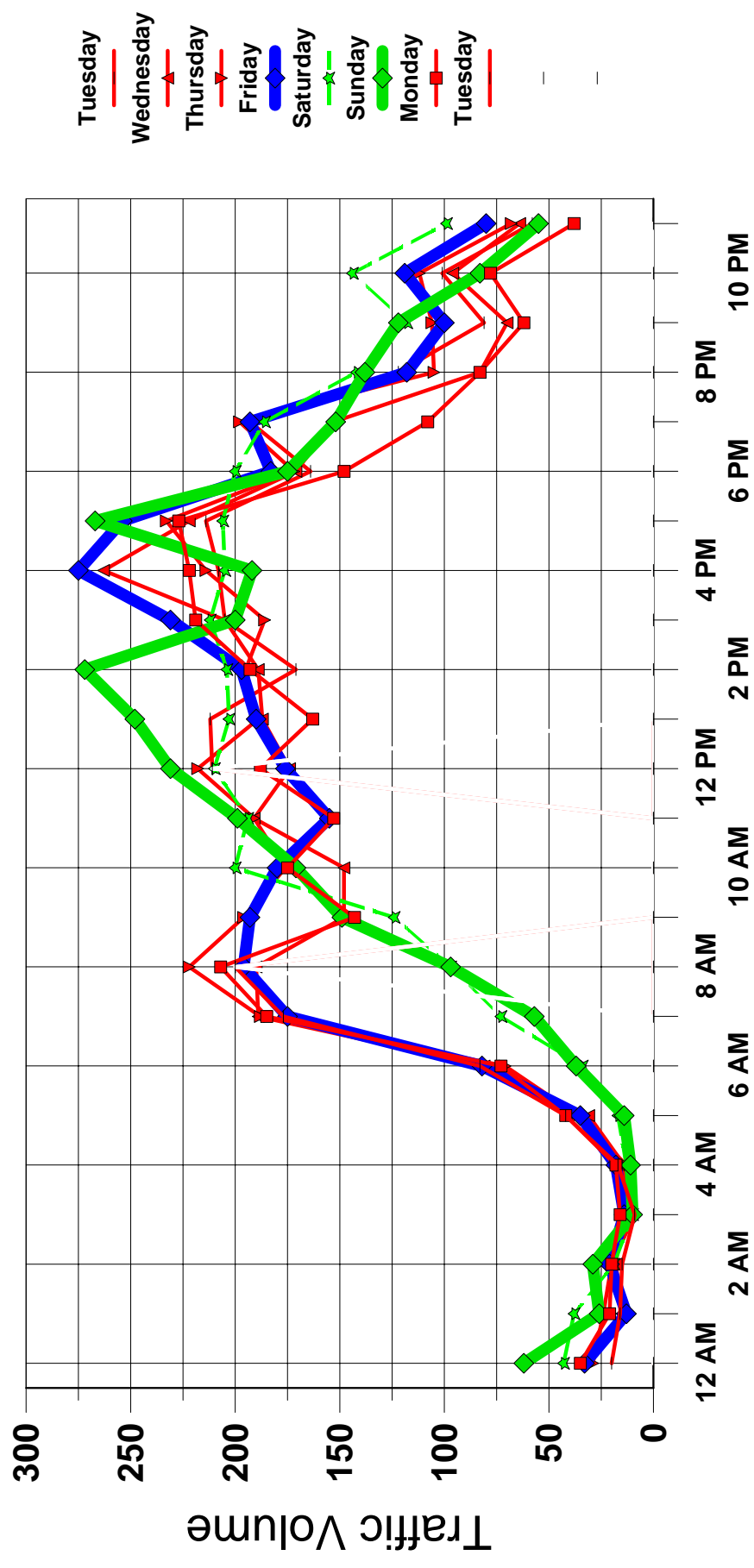


APPENDIX P2  
Traffic Figures and Tables

# Figure 1

## Hourly Traffic Volumes

### NYS Route 42 (CR 48 to CR 108 St. Joseph)

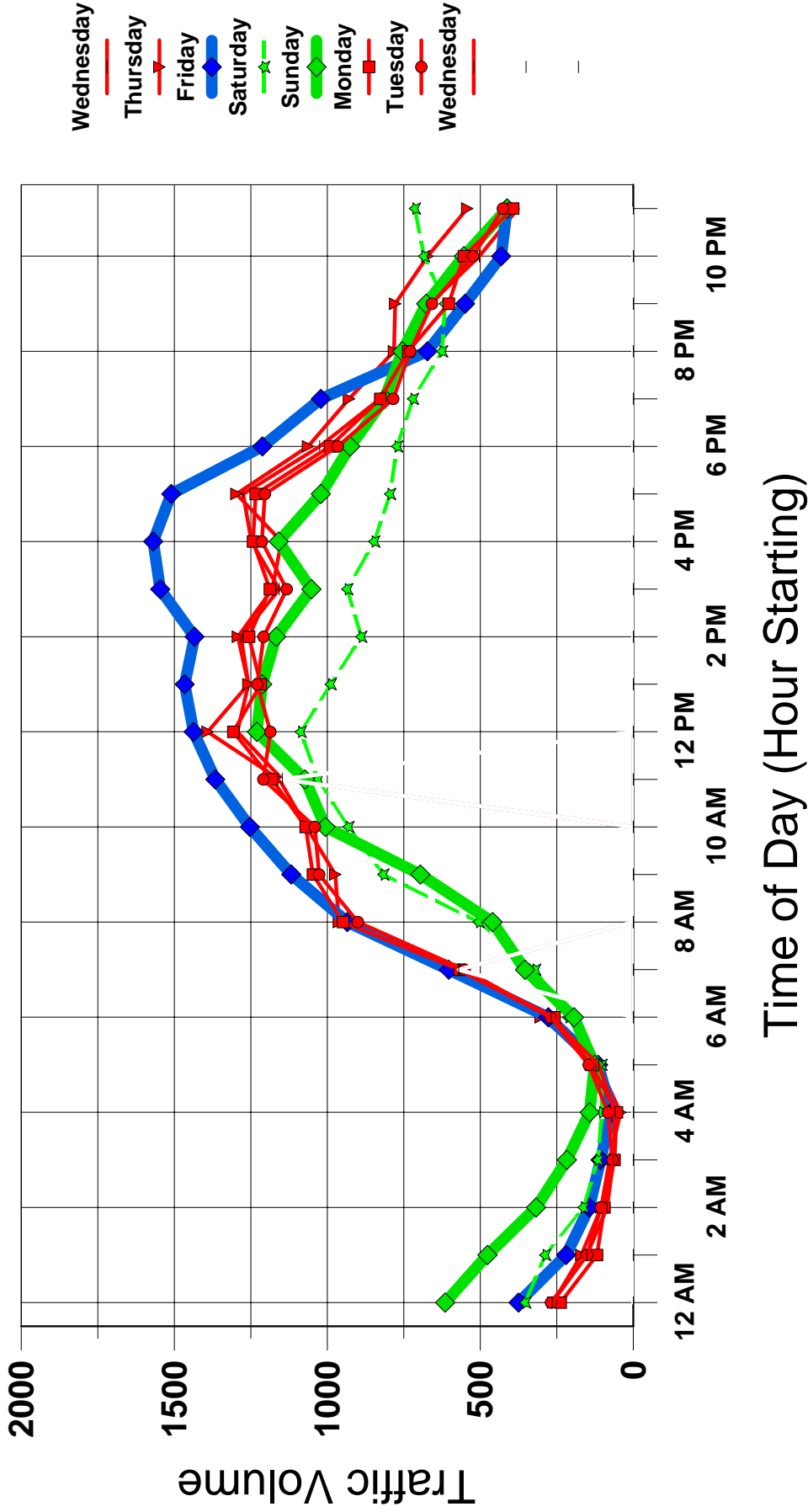


Time of Day (Hour Starting)

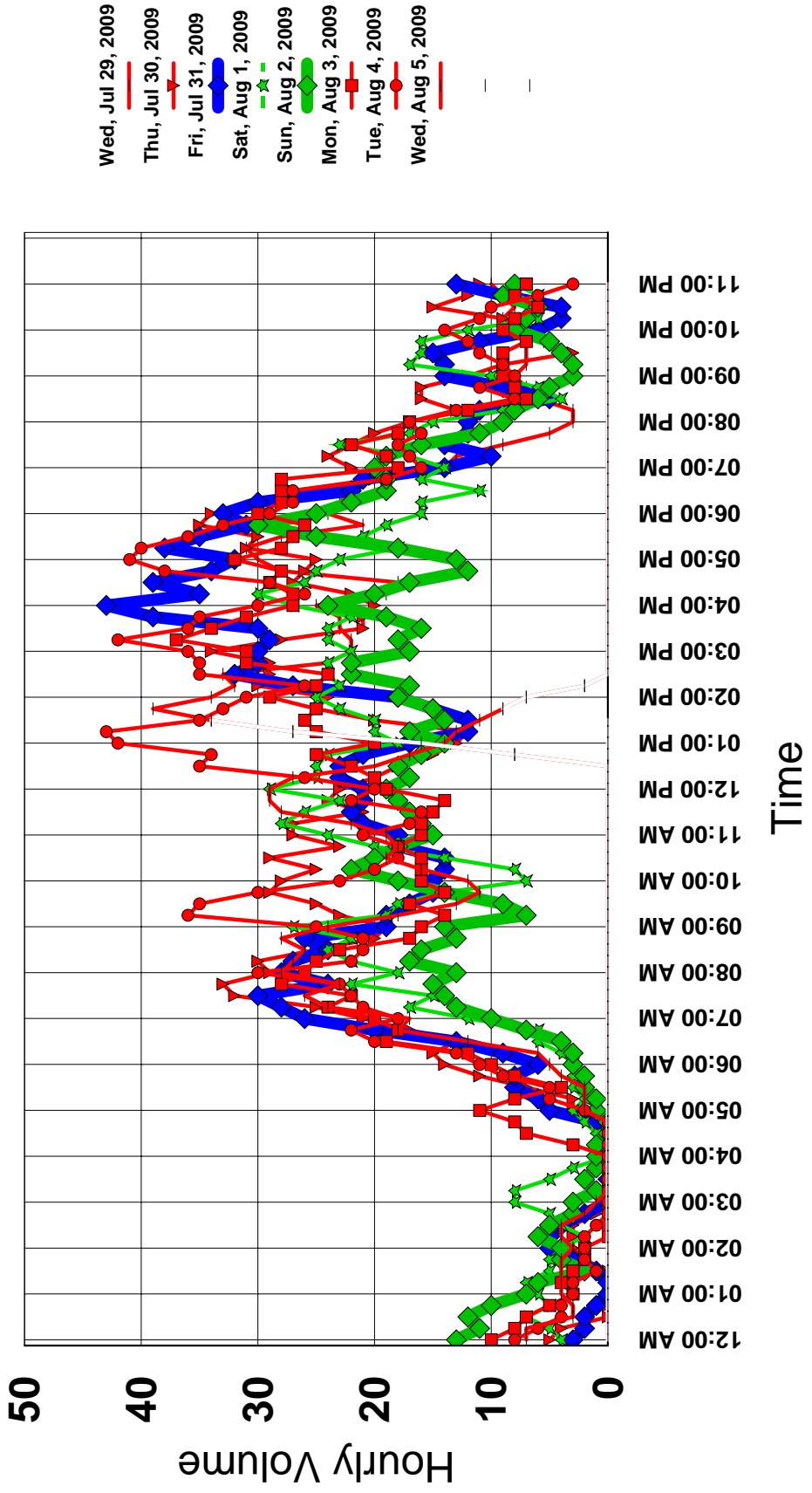
# Figure 2

## Hourly Traffic Volumes

### NYS Route 42 (Jefferson to East Broadway)



**Figure 3**  
**Hourly Traffic Volumes**  
**Cold Spring Road**



**Intersections**

- 1- St. Joseph's Road (CR 108) and Cold Spring Road (CR 102)  
Town of Forestburgh

---

- 2- Cold Spring Road (CR 102) and Rose Valley Road  
Town of Forestburgh

---

- 3- Cold Spring Road (CR 102) and Waverly Avenue  
Town of Thompson

---

- 4- Rose Valley Road and East Broadway (CR 42)  
Town of Thompson

---

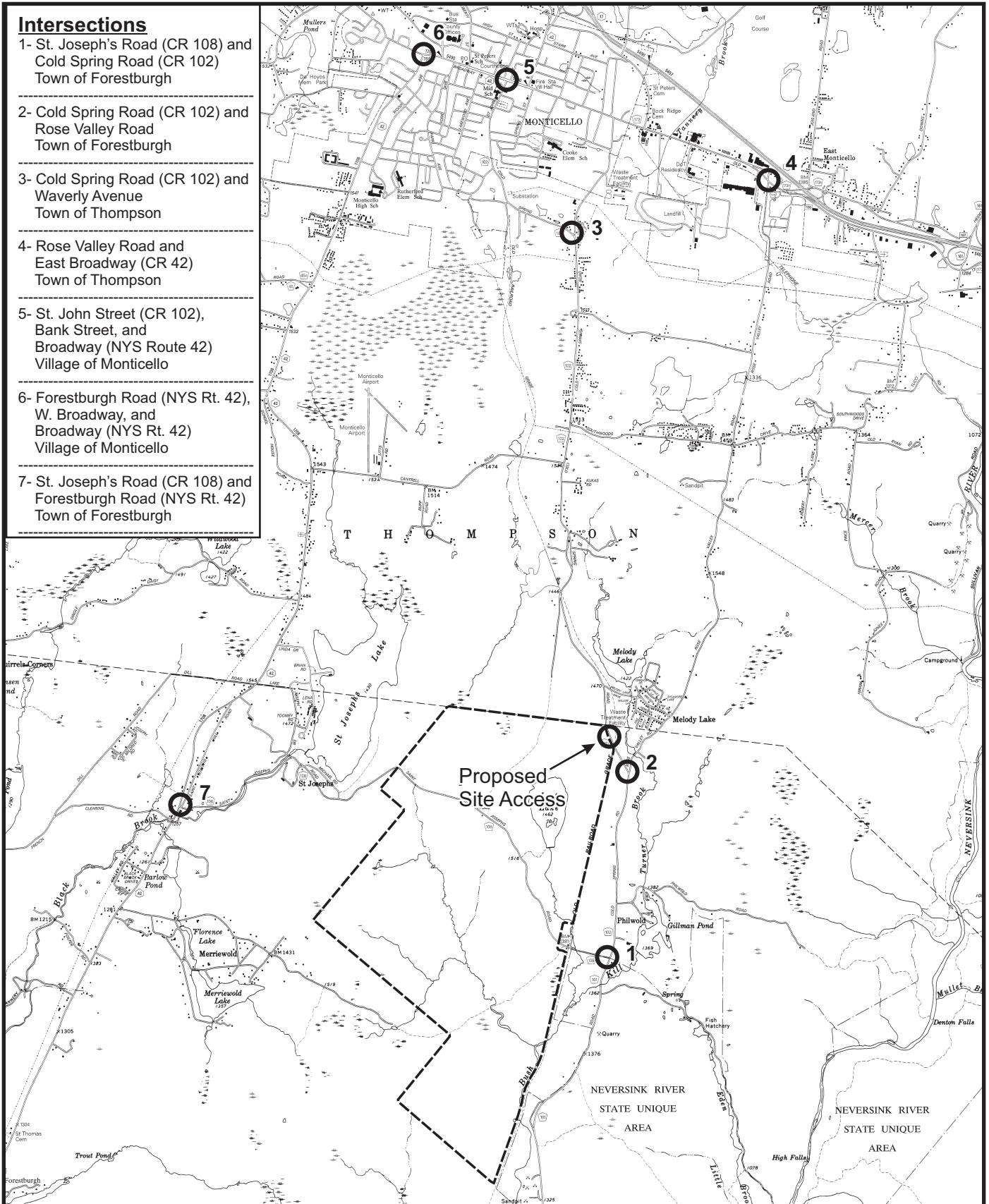
- 5- St. John Street (CR 102), Bank Street, and Broadway (NYS Route 42)  
Village of Monticello

---

- 6- Forestburgh Road (NYS Rt. 42), W. Broadway, and Broadway (NYS Rt. 42)  
Village of Monticello

---

- 7- St. Joseph's Road (CR 108) and Forestburgh Road (NYS Rt. 42)  
Town of Forestburgh



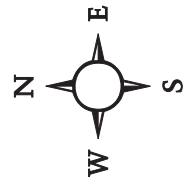
\* Refer to Appendix P2 for Aerials 1 through 7



**LEGEND**

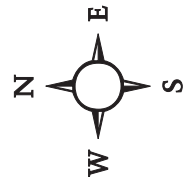
- Intersections Studied
- Site Property Boundary

**Study Intersections\***  
**Lost Lake Resort**  
 Town of Forestburgh, Sullivan County, New York  
 Base: US DOT Planimetric Map, Hartwood & Monticello Quads  
 Scale: 1" = 4,300'



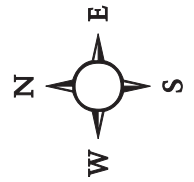
See Figure 3.8-2 for Location  
Lane Configuration Shown in Red

Aerial 1: Intersection of Cold Spring Rd. and St. Joseph's Rd.  
Lost Lake Resort  
Base: Google Maps  
Town of Forestburgh, Sullivan County, New York  
Scale: 1" = 50'



See Figure 3.8-2 for Location  
Lane Configuration Shown in Red

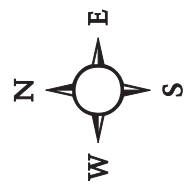
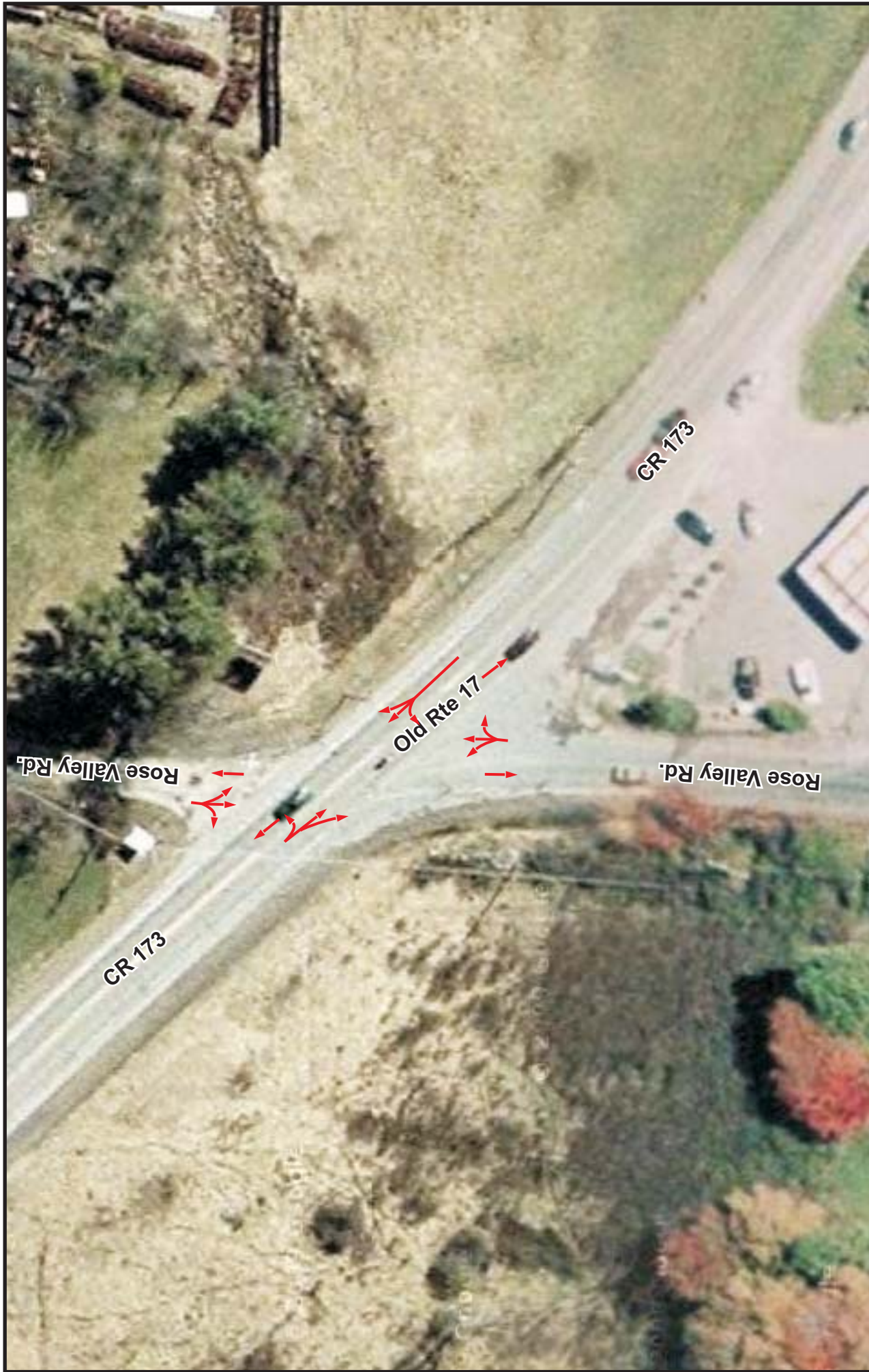
Aerial 2: Intersection of Cold Spring Rd. and Rose Valley Rd.  
Lost Lake Resort  
Base: Google Maps  
Town of Forestburgh, Sullivan County, New York  
Scale: 1" = 50'



See Figure 3.8-2 for Location  
Lane Configuration Shown in **Red**

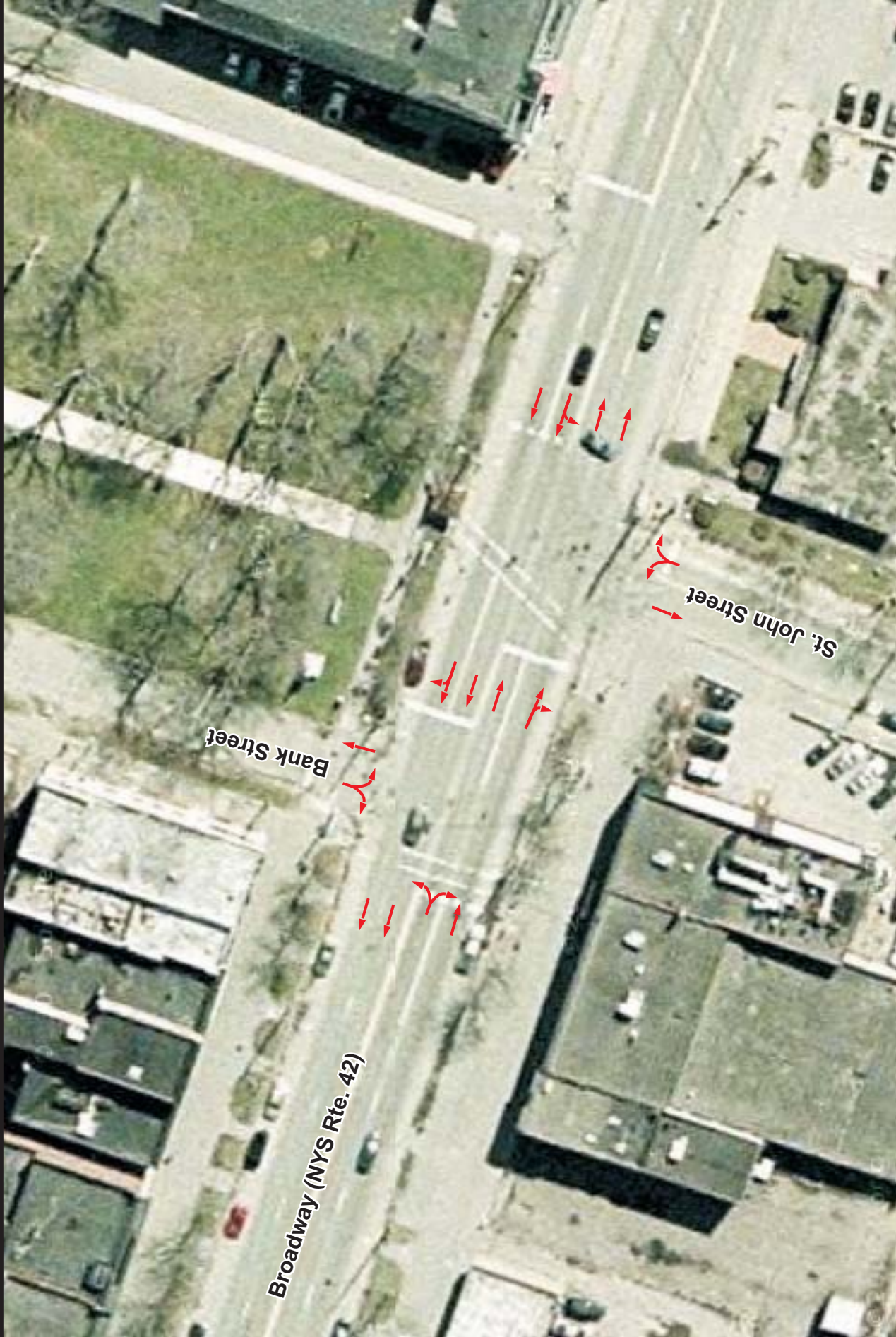
**Aerial 3: Intersection of Cold Spring Rd. and Waverly Ave.**  
Lost Lake Resort  
Base: Google Maps  
Town of Forestburgh, Sullivan County, New York  
Scale: 1" = 50'





See Figure 3.8-2 for Location  
Lane Configuration Shown in **Red**

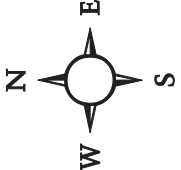
**Aerial 4: Intersection of Rose Valley Rd. and E. Broadway**  
 Lost Lake Resort  
 Base: Google Maps  
 Town of Forestburgh, Sullivan County, New York  
 Scale: 1" = 50'



Bank Street

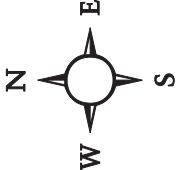
Broadway (NYS Rte. 42)

St. John Street



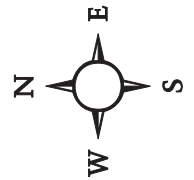
See Figure 3.8-2 for Location  
Lane Configuration Shown in Red

Aerial 5: Intersections of Broadway with St. John St. and Bank St.  
Lost Lake Resort  
Base: Google Maps  
Town of Forestburgh, Sullivan County, New York  
Scale: 1" = 50'



See Figure 3.8-2 for Location  
Lane Configuration Shown in **Red**

**Aerial 6: Intersection of W. Broadway and NYS 42**  
Lost Lake Resort  
Town of Forestburgh, Sullivan County, New York  
Base: Google Maps  
Scale: 1" = 50'



See Figure 3.8-2 for Location  
Lane Configuration Shown in Red

Aerial 7: Intersection of St. Josephs Rd. and NYS Route 42  
Lost Lake Resort  
Base: Google Maps  
Town of Forestburgh, Sullivan County, New York  
Scale: 1" = 50'



Photo 2A: Rose Valley Road looking left (south) onto Cold Spring Road  
Tim Miller Associates, Inc., Dec 2009.



Photo 2B: Rose Valley Road looking right (north) onto Cold Spring Road  
Tim Miller Associates, Inc., Dec 2009.



Photo 3A: Waverly Avenue looking right (north) onto Cold Spring Road  
Tim Miller Associates, Inc., Dec 2009.



Photo 3B: Cold Spring Road looking north at Waverly Avenue  
Tim Miller Associates, Inc., Dec 2009.





Photo 4A: CR 173 westbound looking toward Rose Valley Road (near MOBIL sign)  
Tim Miller Associates, Inc., Dec 2009.



Photo 4B: Rose Valley Road looking left (west) on CR 173  
Tim Miller Associates, Inc., Dec 2009.



Photo 4C: Knoll on south side of CR 173 interfering with sight lines in Photo 4B  
Tim Miller Associates, Inc., Dec 2009.

<b>Table 1 No Build Projects Trip Generation</b>				
<b>Project and Land Uses</b>	<b>Peak Hour Trips</b>			
	<b>Weekday P.M.</b>		<b>Sunday</b>	
	<b>IN (Trips)</b>	<b>OUT (Trips)</b>	<b>IN (Trips)</b>	<b>OUT (Trips)</b>
Thompson Heights - 184 Apartments	76	49	46	48
Congregation OHR North - 75 residential units	44	27	36	35
Sho Fu Den Garden Inn and Spa 80 transient villa units with accessory 50 seat restaurant** and a spa for residents only**	26	19	21	24
The Falls at Black Creek Restaurant, fitness center ** 18 hole golf course, 280 residential units (single family and townhomes)	139	99	111	121
<b>Total</b>	<b>285</b>	<b>194</b>	<b>214</b>	<b>228</b>
** No reduction taken for accessory uses during Friday and Sunday peak hours.				

<b>Table 2 Comparison of 2007 Eagle Rock Resort Actual Development with Proposed Development at Lost Lake Resort</b>	
<b>Land Uses</b>	
<b>Eagle Rock Resort Existing 2007 <sup>1</sup></b>	<b>Lost Lake Resort Approximate Equivalent</b>
Recreational Homes - 611 units	Recreational Homes - 635 units
Hotel - 58 rooms	Hotel - 32 rooms
18 Hole Golf Course	18 Hole Golf Course
Clubhouse	Clubhouse
Restaurant (in Hotel)	Restaurant (in Hotel)
40 Condos	40 Condos
Beach and Boat Dock	Beach and Boat Dock
Spa / Fitness center	Spa
Post office	Post Box Center
Pools	Pool
Ski slope & lodge	
Equestrian center	

<sup>1</sup> Alfred Benesch & Company, *Traffic Impact Study for Eagle Rock Resort*, revised April 2008.

<b>Table 3 Eagle Rock and Lost Lake Resorts Trip Generation</b>				
<b>Land Uses {ITE code} <sup>1</sup></b>	<b>Peak Hour Trips</b>			
	<b>Weekday P.M.</b>		<b>Saturday</b>	
	<b>IN (Trips)</b>	<b>OUT (Trips)</b>	<b>IN (Trips)</b>	<b>OUT (Trips)</b>
<b>Phase and Use - Lost Lake Resort</b>				
I - Recreational Homes 400 units {260}	47	60	69	75
I - Nine Hole Golf Course {430}	12	14	20	21
II - Recreational Homes 235 units {260}	27	35	41	44
II - Nine Hole Golf Course {430}	11	14	20	21
III - Clubhouse and Restaurant *	---	---	---	---
IV - 20 Condos	3	12	5	5
VI - Hotel 32 rooms {330}	10	8	15	12
VI - Beach and Boat Dock *	---	---	---	---
VI - 20 Condos	2	11	5	4
VII - Spa *	---	---	---	---
<b>Above Elements of Lost Lake Resort</b>	<b>112</b>	<b>154</b>	<b>175</b>	<b>182</b>
<b>Eagle Rock Resort 2007 (primary and secondary accesses) <sup>2</sup></b>	<b>75</b>	<b>84</b>	<b>92</b>	<b>73</b>

<sup>1</sup> Trip Generation, Institute of Transportation Engineers, 8th edition, Washington, DC, 2008. Comparative listing of land uses see Table 2.

\* Accessory use to recreational homes and/or golf course.

Rates are based on collective size of specific uses for the project proportioned to phases.

<sup>2</sup> Alfred Benesch & Company, *Traffic Impact Study for Eagle Rock Resort*, revised April 2008, Figures 3 and 4. Data not available for Sunday.

<b>Table 4 Comparison of Lost Lake Resort Trip Rate to Eagle Rock Resort Trip Rate</b>				
<b>Land Uses</b>	<b>Peak Hour Trip Rates <sup>1</sup></b>			
	<b>Weekday P.M.</b>		<b>Saturday</b>	
	<b>IN (Trips/ Unit)</b>	<b>OUT (Trips/ Unit)</b>	<b>IN (Trips/ Unit)</b>	<b>OUT (Trips/ Unit)</b>
Lost Lake Resort Trip Generation per housing unit (675 units <sup>2</sup> ) from Table 2	0.166	0.228	0.259	0.270
Eagle Rock Resort Trip Generation per housing unit (651 units <sup>2</sup> ) existing 2007 from Table 2	0.115	0.129	0.141	0.112
<b>Percent DEIS Traffic Study overestimates Lost Lake Resort traffic based on actual Eagle Rock Resort 2007 traffic</b>	<b>44%</b>	<b>77%</b>	<b>84%</b>	<b>141%</b>
<sup>1</sup> Rates based on trip generation in Table 3 divided by number of units (effectively all non-housing uses are considered accessory to recreational housing).				
<sup>2</sup> Units are recreational homes plus condominium units.				

<b>Table 5 Sight Distance Summary</b>				
<b>Location</b>	<b>Speed Limit (miles per hour)</b>	<b>Grade</b>	<b>Required Sight Distance**</b>	<b>Measured Sight Distance</b>
<b>Sight Distance Left</b>				
Main entrance Lost Lake Resort	55	-2.50%	569	569
Rose Valley Road and Cold Spring Road	55	-0.10%	540	783
Waverly Avenue and Cold Spring Road	40	-2.13%	339	449
Rose Valley Road and Broadway CR 173	40	-0.39%	328	490
<b>Sight Distance Right</b>				
Main entrance Lost Lake Resort	55	2.88%	509	775
Rose Valley Road and Cold Spring Road	55	-.011%	540	793
Waverly Avenue and Cold Spring Road	40	-4.05%	353	708
Rose Valley Road and Broadway CR 173	55	-1.17%	552	942
** Stopping Sight Distance (SSD) based on $SSD = 1.47V*t + (V^2/(30*(f+g)))$ V = Velocity in miles per hour t = Perception time of Motorist (2.5 seconds average) f = wet friction factor of pavement = 0.30 average g = percent grade roadway divided by 100 SSD rounded up to whole number				
Source: Brinkash & Associates, Inc., January 2010.				
Operating speeds may vary from posted limits.				