

419 County Rte. 105  
Woodbury, New York

# Lighting Layout Version 6



Prepared By:  
Damin Sales  
28 Brunswick Avenue  
Edison, NJ 08817  
P: 732-985-8866  
F: 732-985-5521

Job Name:  
419 County Rte. 105  
Woodbury, New York

Lighting Layout  
Version 6

Scale: as noted

Date: 2/14/2023

Case:

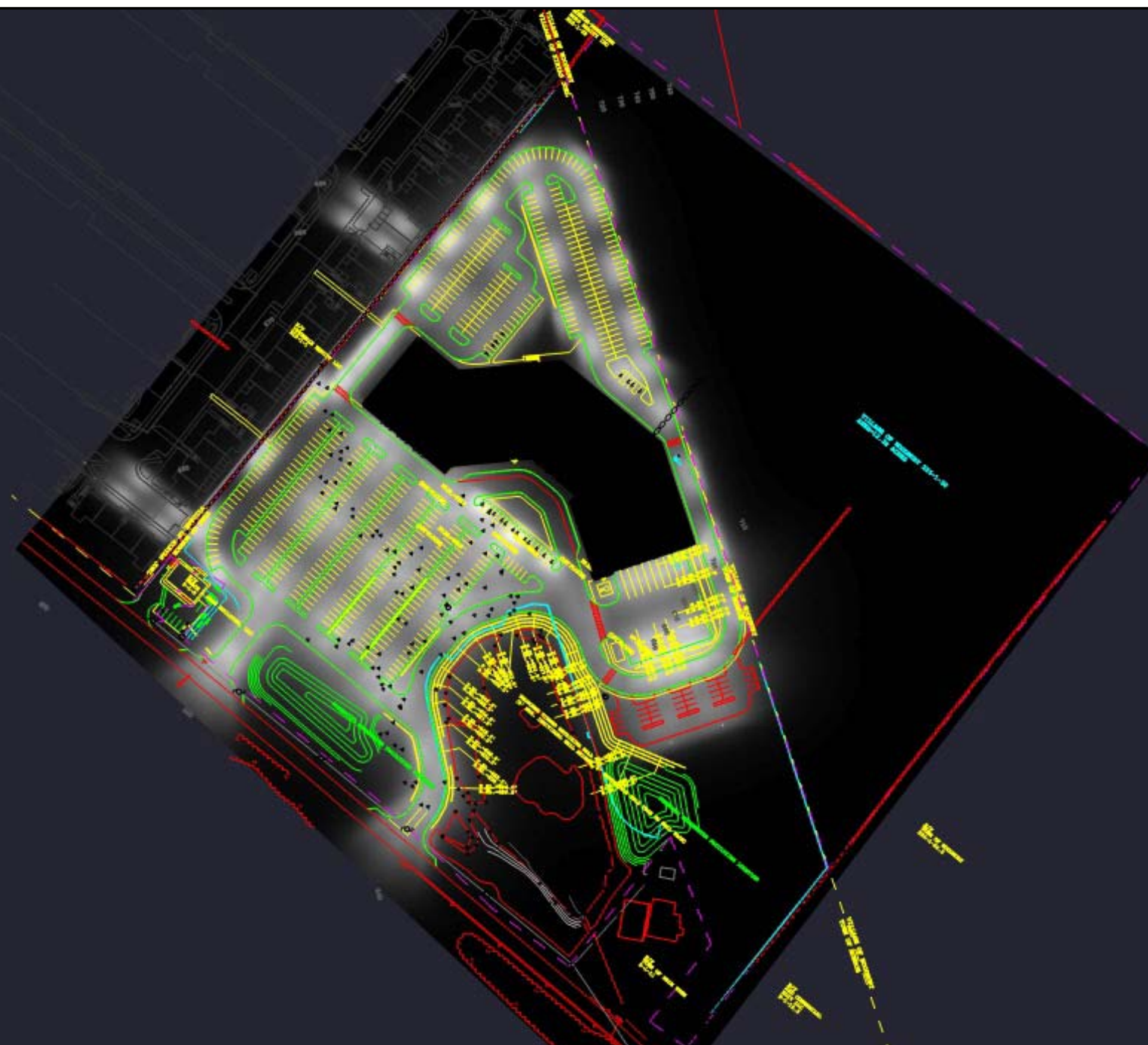
Filename: KJ Mall - Vers 6.AGI

Drawn By: Aaron Boyce

Lighting Design Disclaimer

The Lighting Analysis, ezLayout, Energy Analysis and/or Visual Simulation ("Lighting Design") provided by Damin Sales represents an anticipated prediction of lighting system performance based upon design parameters and information supplied by others. These design parameters and information provided by others have not been field verified by Damin Sales and therefore actual results may vary from the actual field conditions. Damin Sales recommends that design parameters and other information be field verified to reduce variation. Damin Sales neither warranties, either implied or stated with regard to actual measured light levels or energy consumption levels as compared to those illustrated by the Lighting Design. Damin Sales neither warranties, either implied or stated, nor represents the appropriateness, completeness or suitability of the Lighting Design intent as compliant with any applicable regulatory code requirements with the exception of those specifically stated on drawings created and submitted by Damin Sales. The Lighting design is issued, in whole or in part, as advisory documents for informational purposes and is not intended for construction nor as part of a project's construction documentation package. Images taken from Google Earth. Scale is based on Tabloid Page Sizes (11 x 17)

Filename: C:\Users\aaaron\OneDrive - Damin Sales\Photometrics/Layout Information\New KJ Mall\KJ Mall - Vers 6.AGI



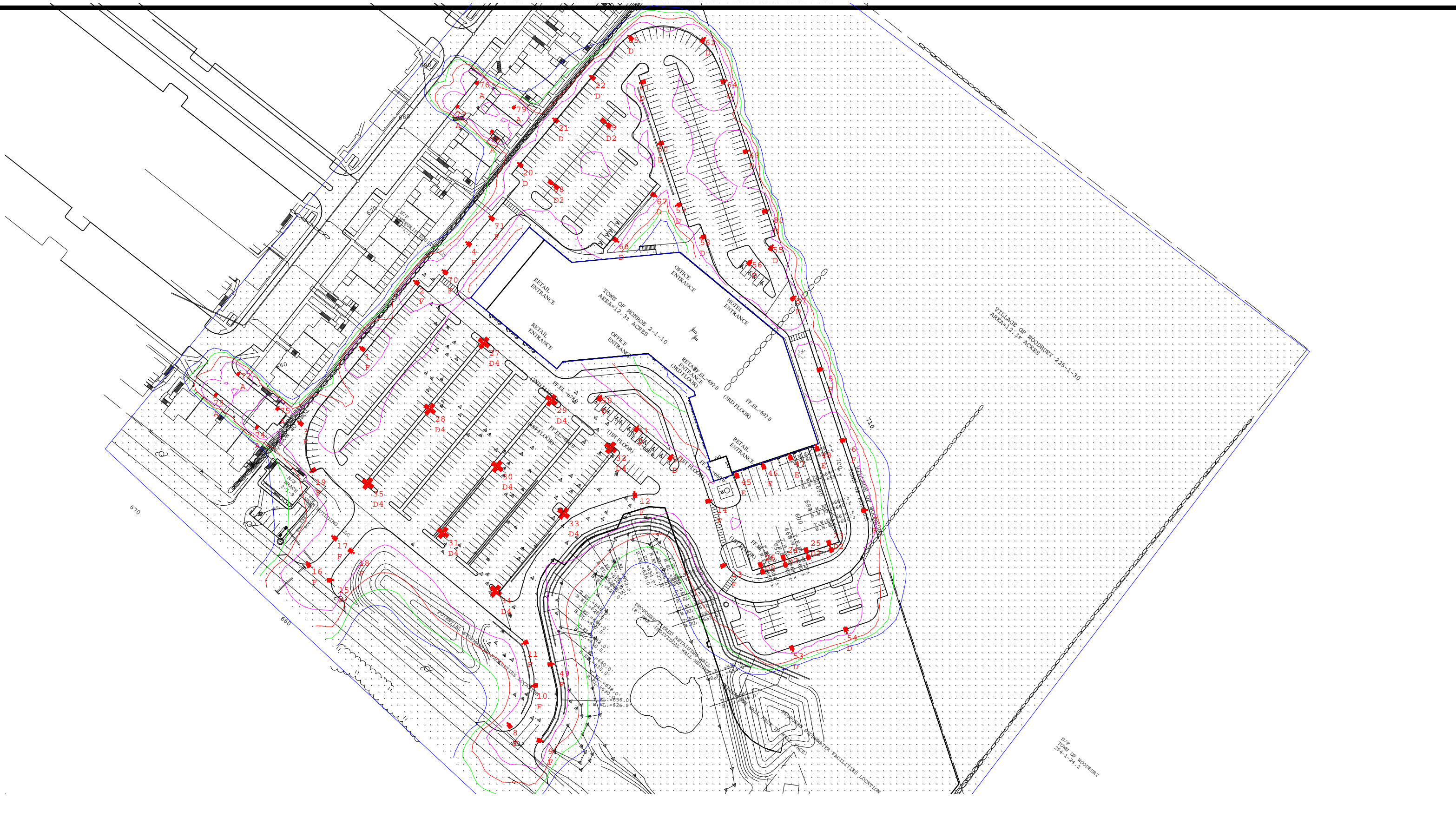
Prepared By:  
 Damin Sales  
 28 Brunswick Avenue  
 Edison, NJ 08817  
 P: 732-985-8866  
 F: 732-985-5521

Job Name:  
 419 County Rte. 105  
 Woodbury, New York  
  
 Lighting Layout  
 Version 6

Scale: as noted  
 Date: 2/14/2023      Case:  
 Filename: KJ Mall - Vers 6.AGI  
 Drawn By: Aaron Boyce

Lighting Design Disclaimer  
 The Lighting Analysis, ezLayout, Energy Analysis and/or Visual Simulation ("Lighting Design") provided by Damin Sales represents an anticipated prediction of lighting system performance based upon design parameters and information supplied by others. These design parameters and information provided by others have not been field verified by Damin Sales and therefore actual results may vary from the actual field conditions. Damin Sales recommends that design parameters and other information be field verified to reduce variation. Damin Sales neither warranties, either implied or stated with regard to actual measured light levels or energy consumption levels as compared to those illustrated by the Lighting Design. Damin Sales neither warranties, either implied or stated, nor represents the appropriateness, completeness or suitability of the Lighting Design intent as compliant with any applicable regulatory code requirements with the exception of those specifically stated on drawings created and submitted by Damin Sales. The Lighting design is issued, in whole or in part, as advisory documents for informational purposes and is not intended for construction nor a part of the project's construction documentation package.  
 Images taken from Google Earth.  
 Scale is based on Tabloid Page Sizes (11 x 17)





Prepared By:  
 Damin Sales  
 28 Brunswick Avenue  
 Edison, NJ 08817  
 P: 732-985-8866  
 F: 732-985-5521

Job Name:  
 419 County Rte. 105  
 Woodbury, New York  
  
 Lighting Layout  
 Version 6

Scale: as noted

Date: 2/14/2023

Case:

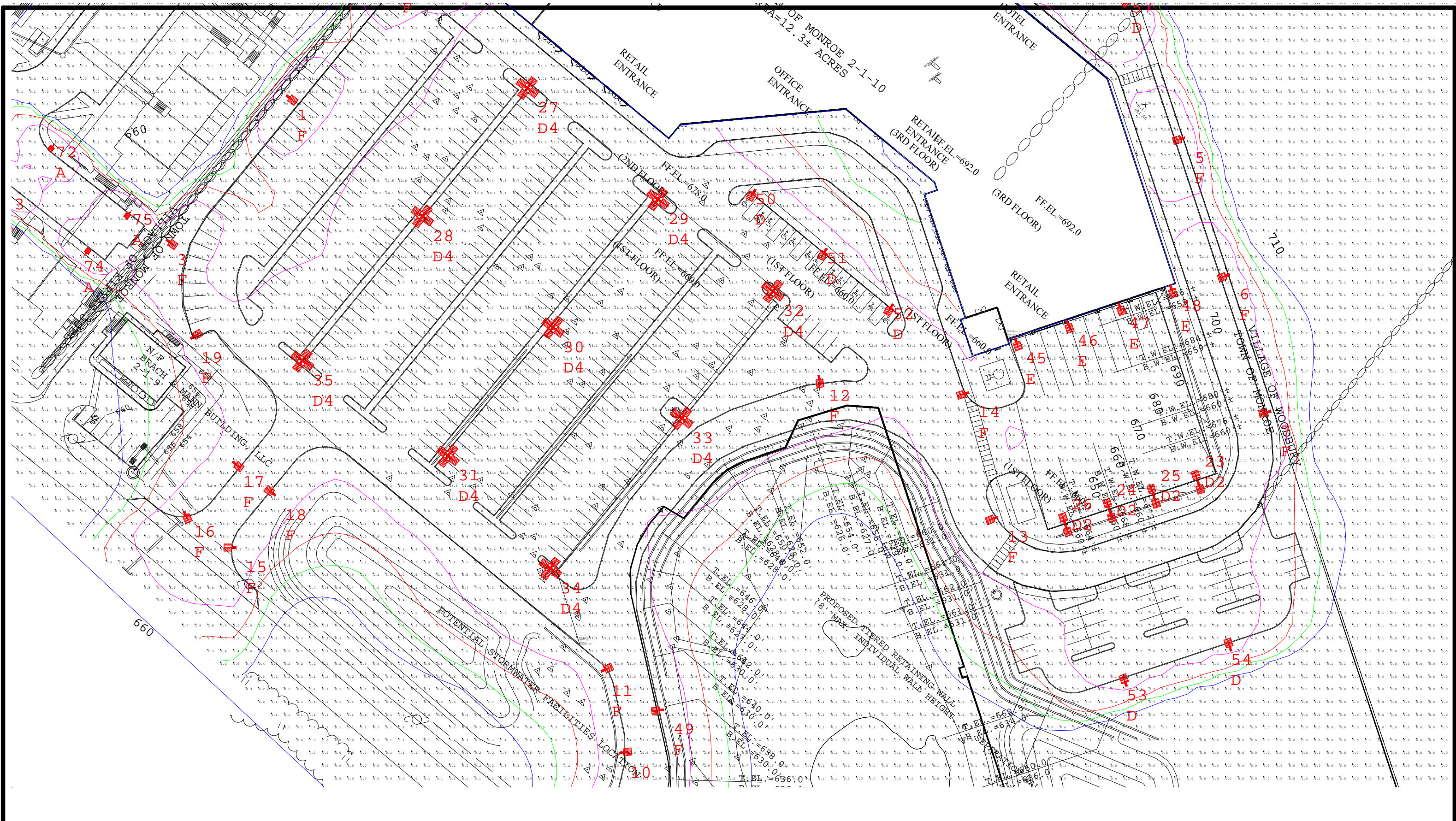
Filename: KJ Mall - Vers 6.AGI

Drawn By: Aaron Boyce

Lighting Design Disclaimer

The Lighting Analysis, ezLayout, Energy Analysis and/or Visual Simulation ("Lighting Design") provided by Damin Sales represents an anticipated prediction of lighting system performance based upon design parameters and information supplied by others. These design parameters and information provided by others have not been field verified by Damin Sales and therefore actual results may vary from the actual field conditions. Damin Sales neither warrants, either implied or stated with regard to actual measured light levels or energy consumption levels as compared to those illustrated by the Lighting Design. Damin Sales neither warranties, either implied or stated, nor represents the appropriateness, completeness or suitability of the Lighting Design intent as compliant with any applicable regulatory code requirements with the exception of those drawings created and submitted by Damin Sales. The Lighting design is issued, in whole or in part, as advisory documents for informational purposes and is not intended for construction nor a project's construction documentation package. Images taken from Google Earth. Scale is based on Tabloid Page Sizes (11 x 17)





Prepared By:  
 Damin Sales  
 28 Brunswick Avenue  
 Edison, NJ 08817  
 P: 732-985-8866  
 F: 732-985-5521

Job Name:  
 419 County Rte. 105  
 Woodbury, New York

Lighting Layout  
 Version 6

Scale: as noted

Date: 2/14/2023      Case:

Filename: KJ Mall - Vers 6.AGI

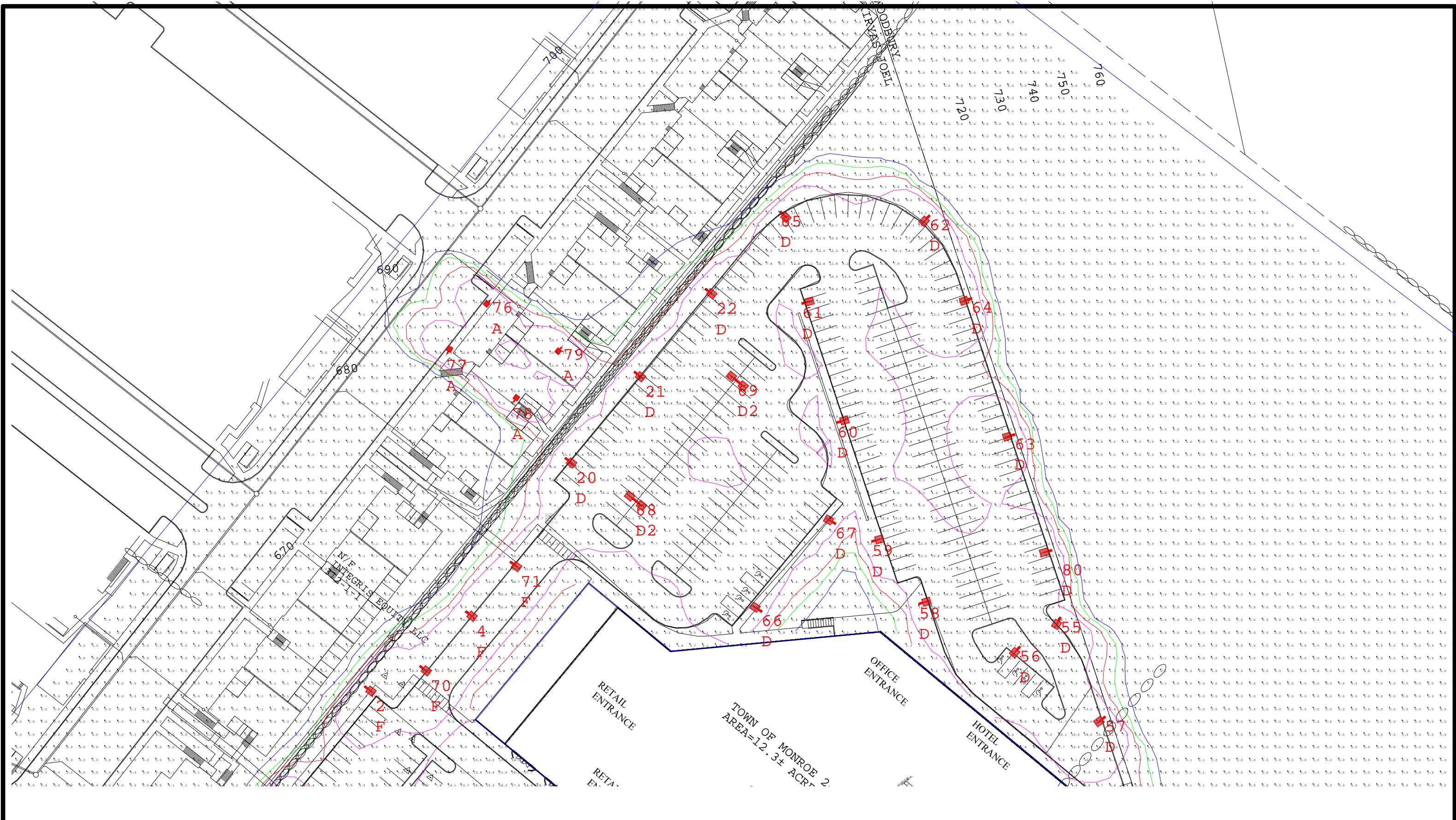
Drawn By: Aaron Boyce

Lighting Design Disclaimer

The Lighting Analysis, ezLayout, Energy Analysis and/or Visual Simulation ("Lighting Design") provided by Damin Sales represents an anticipated prediction of lighting system performance based upon design parameters and information supplied by others. These design parameters and information provided by others have not been field verified by Damin Sales and therefore actual results may vary from the actual field conditions. Damin Sales recommends that design parameters and other information be field verified to reduce variation. Damin Sales neither warrants, either implied or stated with regard to actual measured light levels or energy consumption levels as compared to those illustrated by the Lighting Design. Damin Sales neither warrants, either implied or stated, nor represents the appropriateness, completeness or suitability of the Lighting Design intent as compliant with any applicable regulatory code requirements with the exception of those drawings created and submitted by Damin Sales. The Lighting design is issued, in whole or in part, as advisory documents for informational purposes and is not intended for construction nor a project's construction documentation package.

Images taken from Google Earth.  
 Scale is based on Tabloid Page Sizes (11 x 17)





Prepared By:  
 Damin Sales  
 28 Brunswick Avenue  
 Edison, NJ 08817  
 P: 732-985-8866  
 F: 732-985-5521

Job Name:  
 419 County Rte. 105  
 Woodbury, New York

Lighting Layout  
 Version 6

Scale: as noted

Date: 2/14/2023

Case:







Filename: KJ Mall - Vers 6.AGI

Drawn By: Aaron Boyce

Lighting Design Disclaimer

The Lighting Analysis, ezLayout, Energy Analysis and/or Visual Simulation ("Lighting Design") provided by Damin Sales represents an anticipated prediction of lighting system performance based upon design parameters and information supplied by others. These design parameters and information provided by others have not been field verified by Damin Sales and therefore actual results may vary from the actual field conditions. Damin Sales recommends that design parameters and other information be field verified to reduce variation. Damin Sales neither warrants, either implied or stated with regard to actual measured light levels or energy consumption levels as compared to those illustrated by the Lighting Design. Damin Sales neither warrants, either implied or stated, nor represents the appropriateness, completeness or suitability of the Lighting Design intent as compliant with any applicable regulatory code requirements with the exception of those drawings created and submitted by Damin Sales. The Lighting design is issued, in whole or in part, as advisory documents for informational purposes and is not intended for construction nor a project's construction documentation package. Images taken from Google Earth. Scale is based on Tabloid Page Sizes (11 x 17)

**Luminaire Schedule**

Tag	Symbol	Qty	Label	Arrangement	Lum. Lumens	LLF	Description	Lum. Watts	Arr. Watts	Total Watts
A		8	ALEDM2T_150w	Single	19172	1.000	Pole Mount - Type II	148.6	148.6	1188.8
D		22	ALEDXL4T_385w	Single	50899	1.000	Pole Mount - Type IV	370.6	370.6	8153.2
D2		6	ALEDXL4T_385w X2@180	Back-Back	50899	1.000	Pole Mount - Type IV	370.6	741.2	4447.2
D4		9	ALEDXL4T_385w X4@90	4 @ 90 Degrees	50899	1.000	Pole Mount - Type IV	370.6	1482.4	13341.6
E		4	ALEDXL4TWM_385w	Single	50899	1.000	Wall Mount - Type IV	370.6	370.6	1482.4
F		22	ALEDXL3T_385	Single	48702	1.000	ALEDXL3T	373.5	373.5	8217

**Calculation Summary**

Label	CalcType	Units	Avg	Max	Min	Avg/Min	Max/Min	Description	PtSpcLr	PtSpcTb	Meter Type
Site	Illuminance	Fc	2.99	38.4	0.0	N.A.	N.A.	Readings Taken At 0' 0" AFG	10	10	Horizontal
Loading Dock	Illuminance	Fc	14.05	30.0	5.2	2.70	5.77	Readings Taken At 0' 0" AFG			
Main Parking	Illuminance	Fc	10.38	24.2	1.6	6.49	15.13	Readings Taken At 0' 0" AFG			
Rear Parking	Illuminance	Fc	9.20	32.1	2.0	4.60	16.05	Readings Taken At 0' 0" AFG			

NOTES:




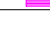
\* The light loss factor (LLF) is a product of many variables, only lamp lumen depreciation (LLD) has been applied to the calculated results unless otherwise noted. The LLD is the result (quotient) of mean lumens / initial lumens per lamp manufacturers' specifications.

\* Illumination values shown (in footcandles) are the predicted results for planes of calculation either horizontal, vertical or inclined as designated in the calculation summary. Meter orientation is normal to the plane of calculation.

\* The calculated results of this lighting simulation represent an anticipated prediction of system performance. Actual measured results may vary from the anticipated performance and are subject to means and methods which are beyond the control of Damian Sales.

\* Mounting height determination is job site specific, our lighting simulations assume a mounting height (insertion point of the luminaire symbol) to be taken at the top of the symbol for ceiling mounted luminaires and at the bottom of the symbol for all other luminaire mounting configurations.

\* Damian Sales luminaire and product designs are protected under U.S. and International intellectual property laws. Patents issued or pending apply.

Isoline Legend	
Illuminance (Fc)	
Color	Value
	0.5
	1
	2
	5



Prepared By:  
 Damian Sales  
 28 Brunswick Avenue  
 Edison, NJ 08817  
 P: 732-985-8866  
 F: 732-985-5521

Job Name:  
 419 County Rte. 105  
 Woodbury, New York

Lighting Layout  
 Version 6

Scale: N.T.S.

Date: 2/14/2023

Case:

Filename: KJ Mall - Vers 6.AGI

Drawn By: Aaron Boyce

Lighting Design Disclaimer

The Lighting Analysis, ezLayout, Energy Analysis and/or Visual Simulation ("Lighting Design") provided by Damian Sales represents an anticipated prediction of lighting system performance based upon design parameters and information supplied by others. These design parameters and information provided by others have not been field verified by Damian Sales and therefore actual results may vary from the actual field conditions. Damian Sales recommends that design parameters and other information be field verified to reduce variation. Damian Sales neither warrants, either implied or stated with regard to actual measured light levels or energy consumption levels as compared to those illustrated by the Lighting Design. Damian Sales neither warrants, either implied or stated, nor represents the appropriateness, completeness or suitability of the Lighting Design intent as compliant with any applicable regulatory code requirements with the exception of those drawings created and submitted by Damian Sales. The Lighting design is issued, in whole or in part, as advisory documents for informational purposes and is not intended for construction nor a project's construction documentation package. Images taken from Google Earth. Scale is based on Tabloid Page Sizes (11 x 17)

Luminaire Location Summary		
LumNo	Label	Mounting Height
1	ALEDXL3T_385	20.000
2	ALEDXL3T_385	20.000
3	ALEDXL3T_385	20.000
4	ALEDXL3T_385	20.000
5	ALEDXL3T_385	25.000
6	ALEDXL3T_385	25.000
7	ALEDXL3T_385	25.000
8	ALEDXL3T_385	39.000
9	ALEDXL3T_385	39.000
10	ALEDXL3T_385	39.000
11	ALEDXL3T_385	39.000
12	ALEDXL3T_385	39.000
13	ALEDXL3T_385	39.000
14	ALEDXL3T_385	39.000
15	ALEDXL3T_385	39.000
16	ALEDXL3T_385	39.000
17	ALEDXL3T_385	39.000
18	ALEDXL3T_385	39.000
19	ALEDXL3T_385	20.000
20	ALEDXL4T_385w	20.000
21	ALEDXL4T_385w	20.000
22	ALEDXL4T_385w	20.000
23	ALEDXL4T_385w X2@180	30.000
24	ALEDXL4T_385w X2@180	30.000
25	ALEDXL4T_385w X2@180	30.000
26	ALEDXL4T_385w X2@180	30.000
27	ALEDXL4T_385w X4@90	39.000
28	ALEDXL4T_385w X4@90	39.000

Luminaire Location Summary		
LumNo	Label	Mounting Height
29	ALEDXL4T_385w X4@90	39.000
30	ALEDXL4T_385w X4@90	39.000
31	ALEDXL4T_385w X4@90	39.000
32	ALEDXL4T_385w X4@90	39.000
33	ALEDXL4T_385w X4@90	39.000
34	ALEDXL4T_385w X4@90	39.000
35	ALEDXL4T_385w X4@90	39.000
45	ALEDXL4TWM_385w	30.000
46	ALEDXL4TWM_385w	30.000
47	ALEDXL4TWM_385w	30.000
48	ALEDXL4TWM_385w	30.000
49	ALEDXL3T_385	39.000
50	ALEDXL4T_385w	20.000
51	ALEDXL4T_385w	20.000
52	ALEDXL4T_385w	20.000
53	ALEDXL4T_385w	39.000
54	ALEDXL4T_385w	39.000
55	ALEDXL4T_385w	25.000
56	ALEDXL4T_385w	25.000
57	ALEDXL4T_385w	25.000
58	ALEDXL4T_385w	25.000
59	ALEDXL4T_385w	25.000
60	ALEDXL4T_385w	25.000
61	ALEDXL4T_385w	25.000
62	ALEDXL4T_385w	25.000
63	ALEDXL4T_385w	25.000
64	ALEDXL4T_385w	25.000
65	ALEDXL4T_385w	25.000
66	ALEDXL4T_385w	39.000
67	ALEDXL4T_385w	39.000
68	ALEDXL4T_385w X2@180	39.000
69	ALEDXL4T_385w X2@180	39.000
70	ALEDXL3T_385	20.000
71	ALEDXL3T_385	20.000
72	ALEDM2T_150w	20.000
73	ALEDM2T_150w	20.000
74	ALEDM2T_150w	20.000
75	ALEDM2T_150w	20.000
76	ALEDM2T_150w	20.000
77	ALEDM2T_150w	20.000
78	ALEDM2T_150w	20.000
79	ALEDM2T_150w	20.000
80	ALEDXL4T_385w	25.000

Luminaire Location Summary		
LumNo	Label	Mounting Height

NOTES:

\* The light loss factor (LLF) is a product of many variables, only lamp lumen depreciation (LLD) has been applied to the calculated results unless otherwise noted. The LLD is the result (quotient) of mean lumens / initial lumens per lamp manufacturers' specifications.

\* Illumination values shown (in footcandles) are the predicted results for planes of calculation either horizontal, vertical or inclined as designated in the calculation summary. Meter orientation is normal to the plane of calculation.

\* The calculated results of this lighting simulation represent an anticipated prediction of system performance. Actual measured results may vary from the anticipated performance and are subject to means and methods which are beyond the control of Damian Sales.

\* Mounting height determination is job site specific, our lighting simulations assume a mounting height (insertion point of the luminaire symbol) to be taken at the top of the symbol for ceiling mounted luminaires and at the bottom of the symbol for all other luminaire mounting configurations.

\* Damian Sales luminaire and product designs are protected under U.S. and International intellectual property laws. Patents issued or pending apply.



Prepared By:  
 Damian Sales  
 28 Brunswick Avenue  
 Edison, NJ 08817  
 P: 732-985-8866  
 F: 732-985-5521

Job Name:  
 419 County Rte. 105  
 Woodbury, New York

Lighting Layout  
 Version 6

Scale: N.T.S.

Date: 2/14/2023      Case:

Filename: KJ Mall - Vers 6.AGI

Drawn By: Aaron Boyce

Lighting Design Disclaimer

The Lighting Analysis, ezLayout, Energy Analysis and/or Visual Simulation ("Lighting Design") provided by Damian Sales represents an anticipated prediction of lighting system performance based upon design parameters and information supplied by others. These design parameters and information provided by others have not been field verified by Damian Sales and therefore actual results may vary from the actual field conditions. Damian Sales recommends that design parameters and other information be field verified to reduce variation. Damian Sales neither warrants, either implied or stated with regard to actual measured light levels or energy consumption levels as compared to those illustrated by the Lighting Design. Damian Sales neither warrants, either implied or stated, nor represents the appropriateness, completeness or suitability of the Lighting Design intent as compliant with any applicable regulatory code requirements with the exception of those drawings created and submitted by Damian Sales. The Lighting design is issued, in whole or in part, as advisory documents for informational purposes and is not intended for construction nor a project's construction documentation package. Images taken from Google Earth. Scale is based on Tabloid Page Sizes (11 x 17)